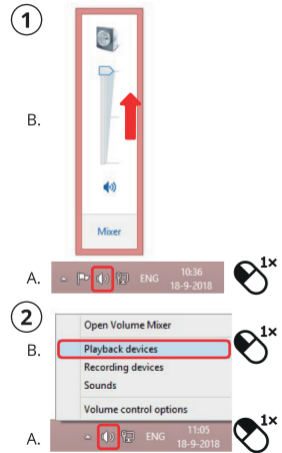
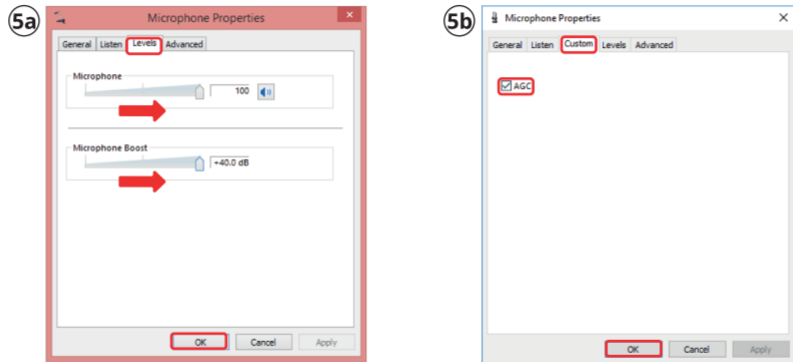


4. Windows 7/8



5. Windows 7/8



FAQ

WWW.TRUST.COM/24133/FAQ

Trust International BV - Laan van Barcelona 600 - 3317DD, Dordrecht, NL
©2020 Trust All rights reserved.

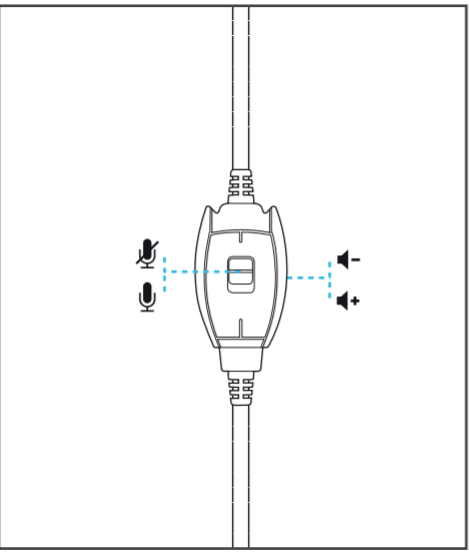
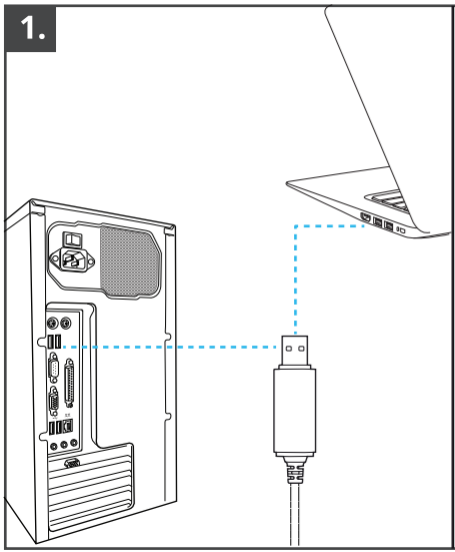
Trust
CHAT HEADSET
For PC & Laptop

RYDO

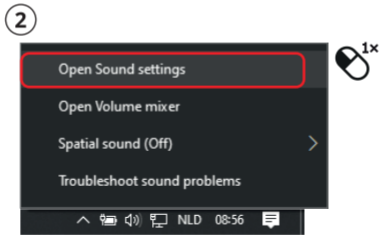
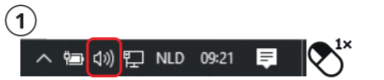


User Guide | Bedienungsanleitung | Mode d'emploi | Gebruikershandleiding | Manuale utente | Manual del usuario | Guia do utilizador | Brukerveiledning | Bruksanvisning | Käyttöopas
Brugsvejledning | Instrukcja obsługi | Návod k použití | Návod na používanie | Használati útmutató | Manual de utilizare | Ръководство за потребителя | Εγχειρίδιο χρήσης | Kullanicı kılavuzu
Руководство пользователя | Uporabniški priročnik | Korisnički priručnik | Guia do usuário | Посібник користувача

1.



2. Windows 10



Sound

3 Speakers (USB PnP Sound Device)
USB Audio Device

Some apps are using custom output settings. You can personalize these in app volume and device preferences below.

Device properties

Volume

4

100

Troubleshoot

Input

5 Microphone (USB PnP Sound Device)
USB Audio Device

Some apps are using custom input settings. You can personalize these in app volume and device preferences below.

6 Device properties

Test your microphone

Troubleshoot

3. Windows 10

6a

Microphone Properties

General Listen Levels Enhancements VoizReal Exp Advanced

Microphone

100

Microphone Boost

+36.0 dB

OK Cancel Apply

6b

Microphone Properties

General Listen Custom Levels Advanced

AGC

OK Cancel Apply