

Canon

PIXMA TS3300 series

Getting Started
Démarrage
Inbetriebnahme
Aan de Slag-gids
Guida Rapida
Para Começar
Guía de inicio
Ξεκινώντας
Uppstartsguide
Komme i gang
Før du begynder
Aloitusopas



<https://ij.start.canon>



Read **Safety and Important Information** (addendum) first.

Commencez par lire **Sécurité et informations importantes** (addendum).

Lesen Sie **Sicherheitsinformationen und wichtige Hinweise** (Anhang) zuerst.

Lees eerst **Veiligheidsinformatie en belangrijke informatie** (addendum).

Leggere innanzitutto **Informazioni importanti e sulla sicurezza** (addendum).

Leia **Informações Importantes e Sobre Segurança** (adendo) primeiro.

Lea primero **Información de seguridad e información importante** (apéndice).

Διαβάστε πρώτα τις **Πληροφορίες για την ασφάλεια και σημαντικές πληροφορίες** (συμπλήρωμα).

Läs **Information om säkerhet och annan viktig information** (bilaga) först.

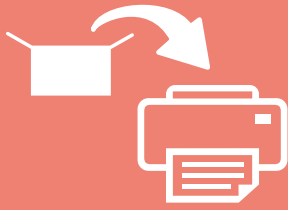
Les **Sikkerhetsinformasjon og viktig informasjon** (tillegg) først.

Læs **Sikkerhedsoplysninger og vigtige oplysninger** (tillæg) først.

Lue **Turvallisuus ja tärkeitä tietoja** (lisähuomautus) ensin.



Q T 6 3 2 4 6 V 0 1

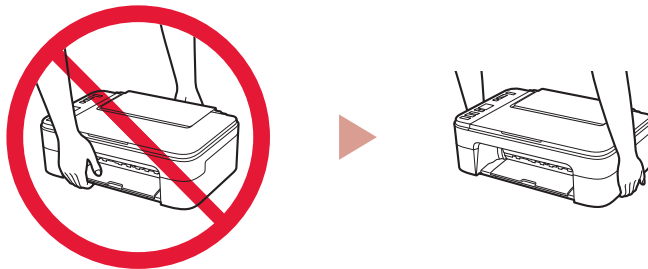



Installing the Printer.....	page 1
Installation de l'imprimante.....	page 1
Installation des Druckers.....	Seite 1
De printer installeren.....	pagina 1
Installazione della stampante.....	pagina 1
Instalando a impressora.....	página 1
Instalación de la impresora.....	página 1
Εγκατάσταση του εκτυπωτή.....	σελίδα 1
Installera skrivaren.....	sida 1
Installere skriveren.....	side 1
Installation af printeren.....	side 1
Tulostimen asennus.....	sivu 1

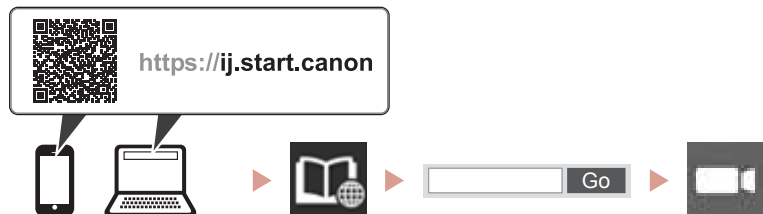


Connecting to a Computer, Smartphone or Tablet.....	page 4
Connexion à un ordinateur, un smartphone ou une tablette.....	page 4
Herstellen einer Verbindung mit einem Computer, Smartphone oder Tablet.....	Seite 4
Verbinden met een computer, smartphone of tablet.....	pagina 4
Connessione a un computer, uno smartphone o un tablet.....	pagina 4
Conectando a um computador, smartphone ou tablet.....	página 4
Conexión con un ordenador, teléfono inteligente o tableta.....	página 4
Σύνδεση σε υπολογιστή, smartphone ή tablet.....	σελίδα 4
Ansluta till en dator, smarttelefon eller surfplatta.....	sida 4
Koble til en datamaskin, en smarttelefon eller et nettbrett.....	side 4
Tilslutning til en computer, smartphone eller tablet.....	side 4
Yhdistäminen tietokoneeseen, älypuhelimkeen tai tablet-tietokoneeseen.....	sivu 4

Holding the Printer
Manipulation de l'imprimante
Halten des Druckers
De printer vasthouden
Come tenere la stampante
Segurando a impressora
Cómo sujetar la impresora
Πώς να κρατήσετε τον εκτυπωτή
Bära skrivaren
Holde skriveren
Holde printeren
Tulostimen pitäminen



 Instructional Videos
Instructions vidéo
Anleitungsvideos
Instructievideo's
Video informativi
Vídeos instrucionais
Vídeos instructivos
Εκπαιδευτικό βίντεο
Instruktionsfilmer
Instruksjonsvideoer
Instruktionsvideoer
Ohjevideot



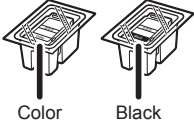
Online Setup

<https://ij.start.canon>



1. Checking Included Items

- FINE cartridges
- Power cord
- Setup CD-ROM for Windows
- Safety and Important Information
- Getting Started (this manual)



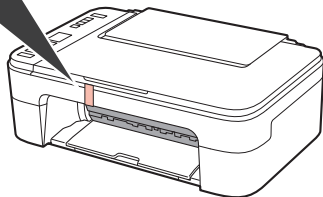
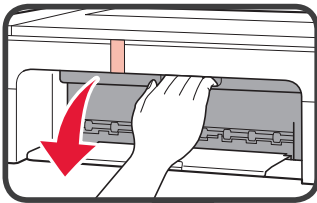
Color

Black

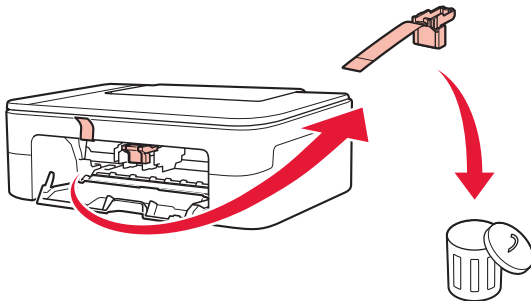
2. Removing Packing Materials



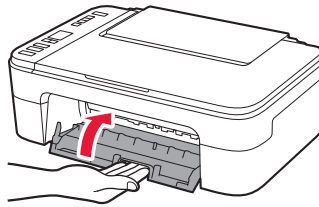
- 1 Remove and dispose of any packing materials and orange tape from the printer's exterior.
- 2 Open the cover.



- 3 Remove and dispose of the orange tape and protective material inside.



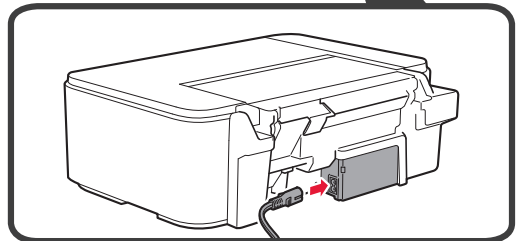
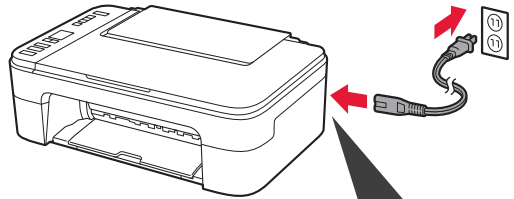
- 4 Close the cover.



3. Turning on the Printer

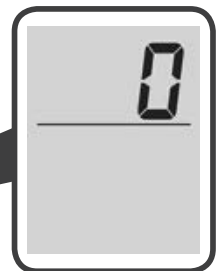
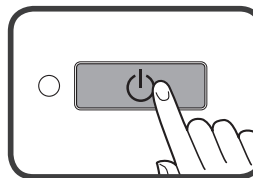


- 1 Connect the power cord.



At this time, do not connect any other cables.

- 2 Press the **ON** button.

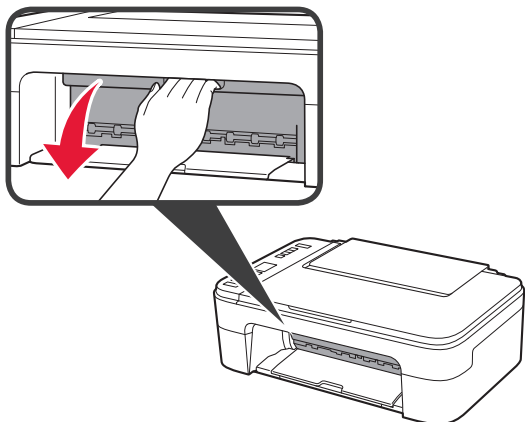


If **E > 0 > 9** appears on the screen, press the **ON** button to turn off the printer, and then redo from step 2 of "2. Removing Packing Materials".

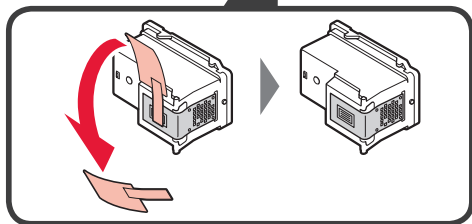
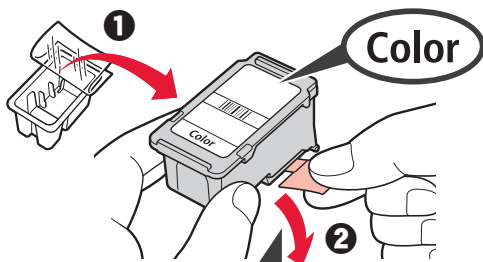
4. Installing the FINE Cartridges



- 1 Open the cover.



- 2
- 1 Remove the Color FINE cartridge from the container.
 - 2 Remove the protective tape.

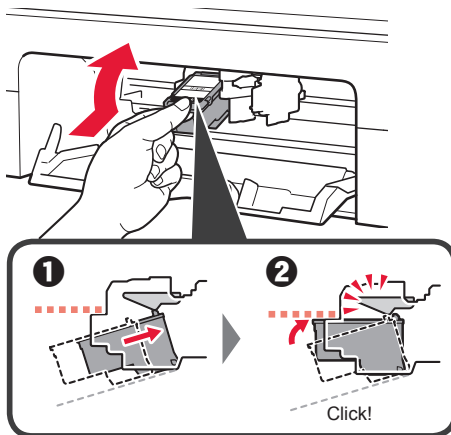


Do not touch.

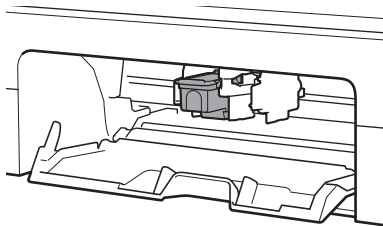
Be careful of ink on the protective tape.

- 3
- 1 Insert the Color FINE cartridge into the FINE cartridge holder on the left-hand side at a slight upward angle.
 - 2 Push the FINE cartridge in and up firmly until it snaps into place.

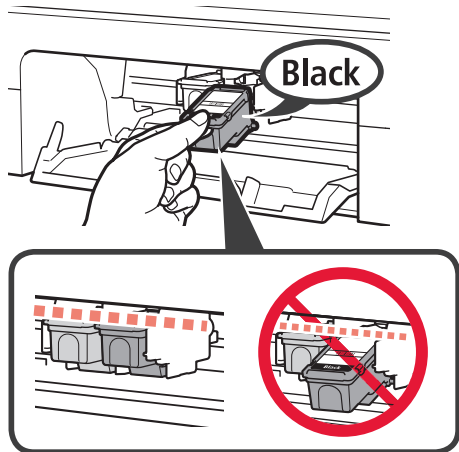
Confirm that the FINE cartridge is straight and level.



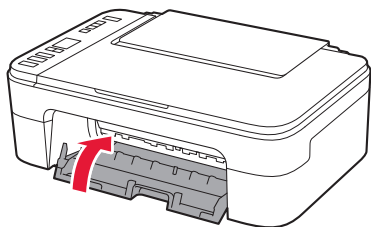
Do not bump it against the surrounding parts.



- 4 Repeat steps 2 to 3 to install the Black FINE cartridge on the right-hand side.



- 5 Close the cover.

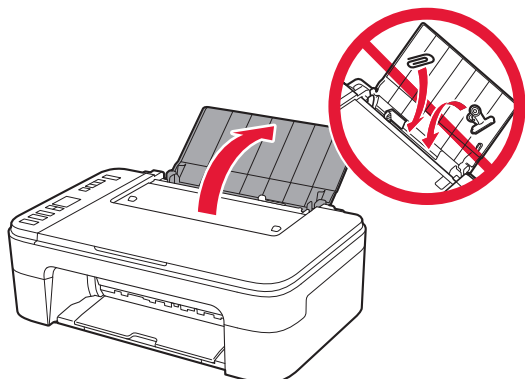


If **E > 0 > 4** appears on the screen, return to step 3 of "4. Installing the FINE Cartridges" and confirm that the Color and Black FINE cartridges are installed correctly.

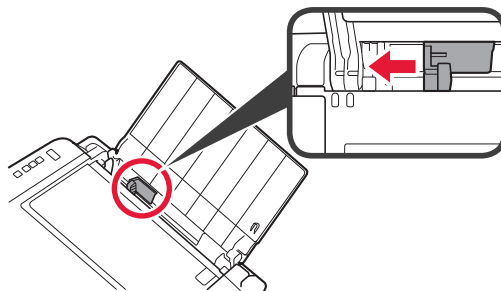
5. Loading Paper



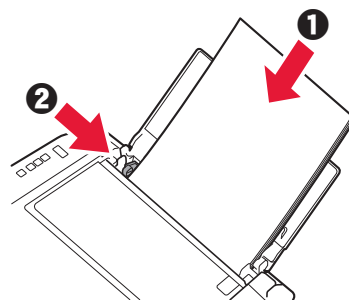
- 1 Open the paper support.



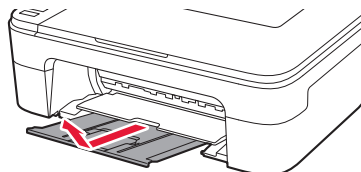
- 2 Slide the paper guide to the left.



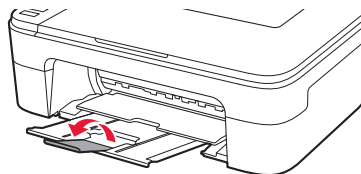
- 3
- 1 Load Letter or A4 sized plain paper against the right edge with the print side facing up.
 - 2 Slide the paper guide to align it with the side of the paper stack.



- 4 Pull out the paper output tray.

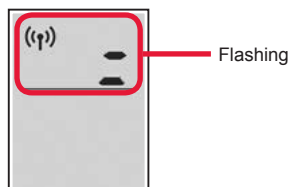


- 5 Open the output tray extension.



6. Preparing for Connection

- 1 Confirm that the screen appears as shown below.



What device are you connecting?



Computer



Computer and
smartphone



Smartphone

To use your printer without connecting to any other devices. → "7-c"

7-a

Connecting to a Computer

If you are using multiple computers, perform these steps on each computer.



- 1 Access the Canon website from a computer.

<https://ij.start.canon>



- 2 Select  **Set Up**.

- 3 Enter your printer's model name and click **Go**.

- 4 Click **Start**.

- 5 Click **If you have already prepared your printer, go to Connect**.

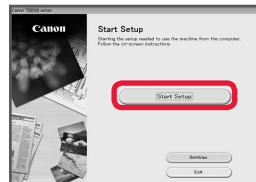
▶▶▶ Note

The following steps are for Windows (except Windows 10 in S mode) and macOS users. For other operating systems, continue setup by following the on-screen instructions instead.

- 6 Click **Download**.

- 7 Run the downloaded file.

- 8 Click **Start Setup**.



- 9 Follow the on-screen instructions.

- These operations may take some time.
- To connect to a smartphone as well, see "7-b. Connecting to a Smartphone" on page 5.

Using the Setup CD-ROM for Windows

Double click **EasySetup.exe** in the CD-ROM, and then continue from step 3. If you do not have an internet connection, open the **win** folder in the CD-ROM and double click **SETUP.exe**. This will install the printer driver.

7-b

Connecting to a Smartphone

If you are using multiple smartphones, perform these steps on each smartphone.



Prepare the following before starting.

- 1 Enable the Wi-Fi setting on your smartphone.
- 2 Connect your smartphone to the wireless router (if you have a wireless router).
Refer to your smartphone and wireless router manuals for more details.

- 1 Install the "Canon PRINT Inkjet/SELPHY" app on your smartphone.

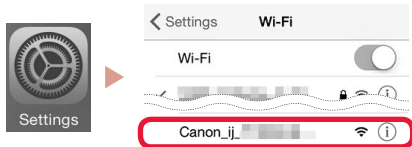
- Scan the QR code shown on the right to access the Canon website, and then download the app.



- 2 Open your smartphone's Wi-Fi settings. Tap the network name (SSID) that starts with "Canon_ij_".

If "Canon_ij_" does not appear, proceed to step 3.

(Example of iOS screen)



- 3 Open the installed app.



- 4 Follow the on-screen instructions in the app to add your printer.

Once you have added your printer, you can print from your smartphone.
To print photos, see "Loading Photo Paper" on page 6.

7-c

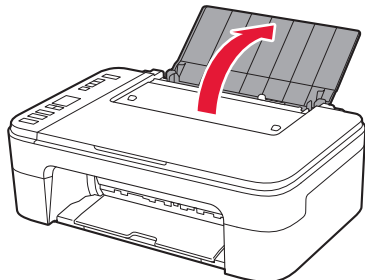
No Device Connected

- 1 Press the **Stop** button.
- 2 Confirm that the screen appears as shown below.

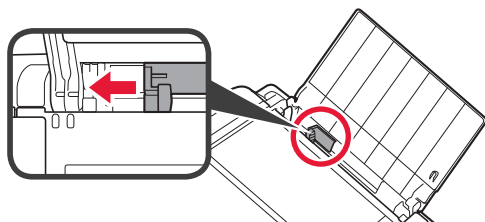


Loading Photo Paper

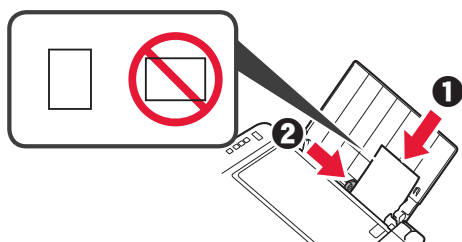
- 1 Open the paper support.



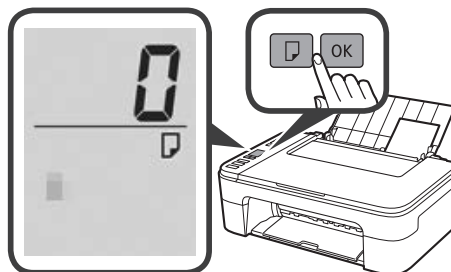
- 2 Slide the paper guide to the left.



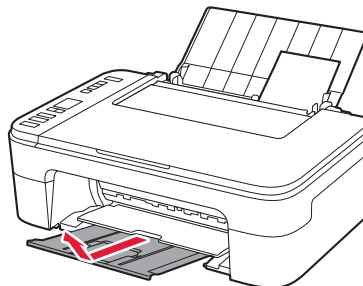
- 3
- 1 Load several sheets of photo paper against the right edge with the print side facing up.
 - 2 Slide the paper guide to align it with the side of the paper stack.



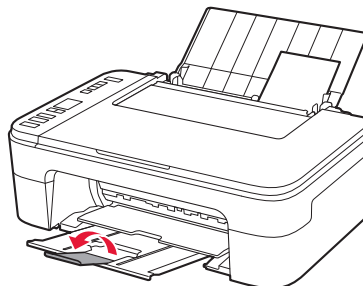
- 4 Press the **Paper Select** button, select a paper size, and then press the **OK** button.



- 5 Pull out the paper output tray.



- 6 Open the output tray extension.



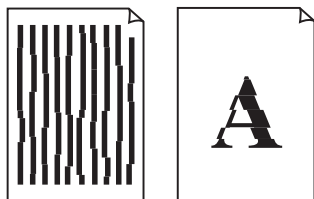
If Print Results Are Unsatisfactory

Perform Print Head Alignment if straight lines are crooked or colors are inconsistent, or print results are otherwise not what you expected.

For details, click **Maintenance** on the **Online Manual** and refer to **If Printing Is Faint or Uneven > Aligning the Print Head**.

Refer to the back cover of this manual for how to open the **Online Manual**.

■ Lines Are Misaligned



■ Uneven or Streaked Colors



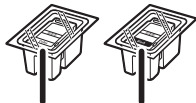
Configuration en ligne

<https://ij.start.canon>



1. Vérification des éléments fournis

- Cartouches FINE



Couleur

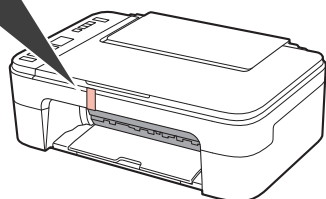
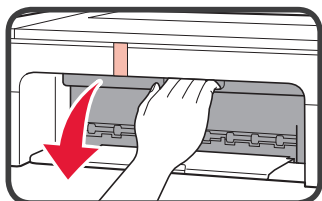
Noire

- Cordon d'alimentation
- CD-ROM d'installation pour Windows
- Sécurité et informations importantes
- Démarrage (ce manuel)

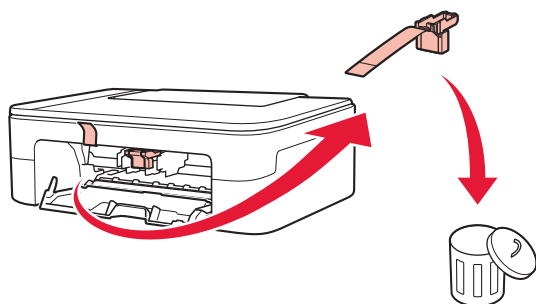
2. Retrait du matériel d'emballage



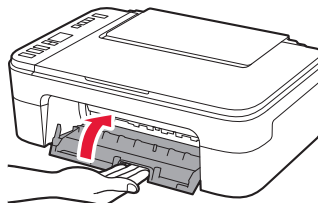
- 1 Retirez et jetez le matériel d'emballage et la bande orange de l'extérieur de l'imprimante.
- 2 Ouvrez le capot.



- 3 Retirez et jetez la bande orange et le matériau protecteur se trouvant à l'intérieur.



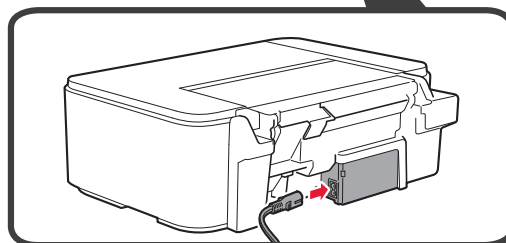
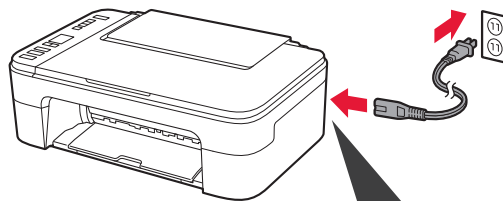
- 4 Refermez le capot.



3. Mise sous tension de l'imprimante

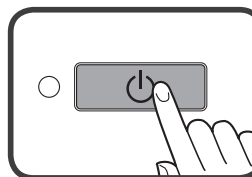


- 1 Branchez le cordon d'alimentation.



À ce stade, ne branchez aucun autre câble.

- 2 Appuyez sur le bouton **MARCHE (ON)**.

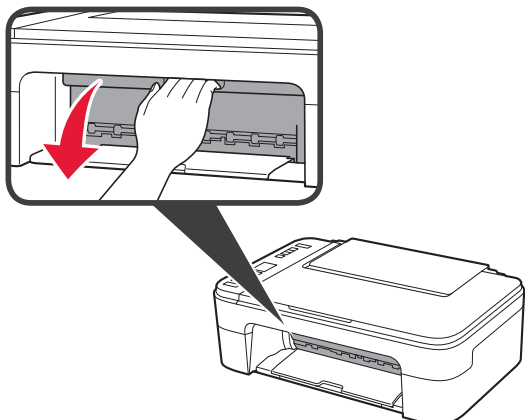


Si **E > 0 > 9** s'affiche à l'écran, appuyez sur le bouton **MARCHE (ON)** pour mettre l'imprimante hors tension, puis reprenez à partir de l'étape 2 sur « 2. Retrait du matériel d'emballage ».

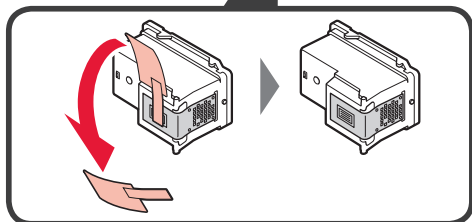
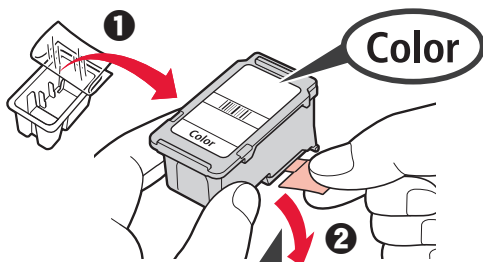
4. Installation des cartouches FINE



- 1 Ouvrez le capot.



- 2 1 Sortez la cartouche FINE couleur du conteneur.
2 Retirez le ruban protecteur.

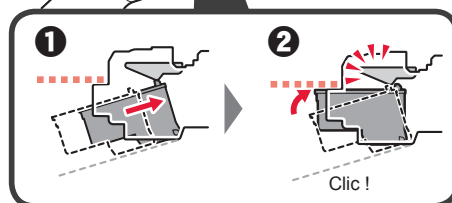
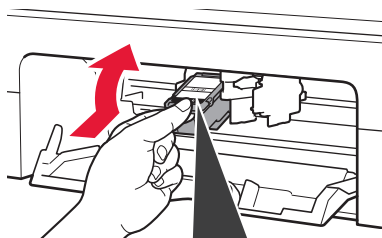


Ne pas toucher.

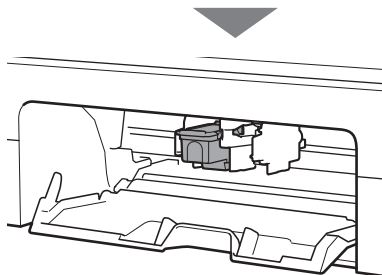
Faites attention à l'encre se trouvant sur le ruban protecteur.

- 3 1 Insérez la cartouche FINE couleur dans le porte-cartouche FINE sur la gauche en l'inclinant légèrement vers le haut.
2 Poussez fermement la cartouche FINE vers le bas puis vers le haut jusqu'à entendre un déclic.

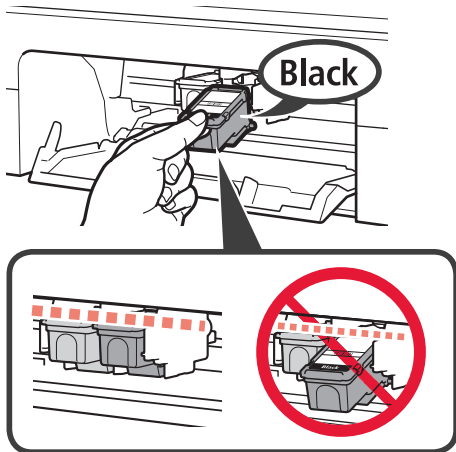
Vérifiez que la cartouche FINE est droite et de niveau.



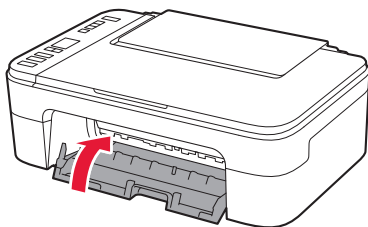
Ne cognez pas la cartouche contre les bords.



- 4 Répétez les étapes 2 à 3 pour installer la cartouche FINE noire sur la droite.



- 5 Refermez le capot.

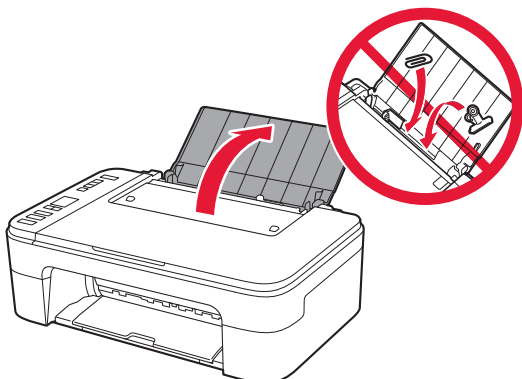


Si **E > 0 > 4** s'affiche à l'écran, revenez à l'étape 3 sur « 4. Installation des cartouches FINE » et confirmez que les cartouches FINE noire et couleur sont installées correctement.

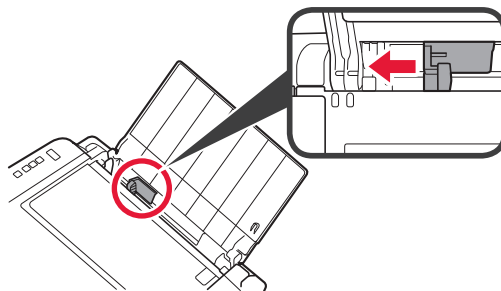
5. Chargement du papier



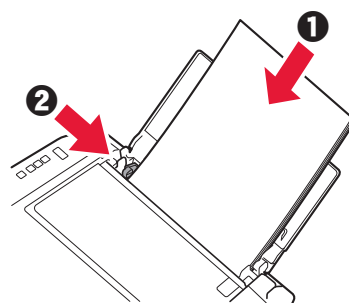
- 1 Ouvrez le support papier.



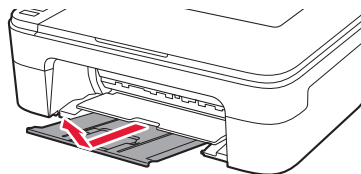
- 2 Faites glisser le guide papier vers la gauche.



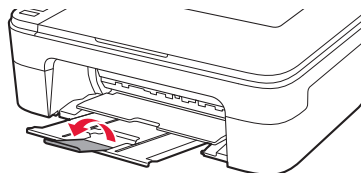
- 3 **1** Chargez du papier ordinaire au format A4 ou Lettre le long du bord droit face à imprimer vers le haut.
2 Faites glisser le guide papier de manière à l'aligner avec le côté de la pile de papier.



- 4 Retirez le bac de sortie papier.

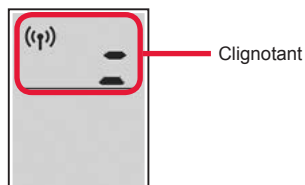


- 5 Ouvrez l'extension du bac de sortie papier.



6. Préparation de la connexion

- 1 Vérifiez que l'écran s'affiche comme ci-dessous.



Quel périphérique connectez-vous ?



Ordinateur



Ordinateur et
smartphone



Smartphone

Pour utiliser votre imprimante sans connexion à aucun autre périphérique.

→ « 7-c »

7-a

Connexion à un ordinateur


Si vous utilisez plusieurs ordinateurs, effectuez ces étapes sur chaque ordinateur.



- 1 Accès au site Web Canon à partir d'un ordinateur.

<https://ij.start.canon>



- 2 Sélectionnez  **Configuration**.
- 3 Entrez le nom de modèle de votre imprimante et cliquez sur **Accéder**.
- 4 Cliquez sur **Démarrer**.
- 5 Cliquez sur **Si vous avez déjà préparé votre imprimante, allez à Connecter**.

»»» Remarque

Les étapes suivantes concernent les utilisateurs Windows (sauf Windows 10 en mode S) et macOS. Pour les autres systèmes d'exploitation, continuez la configuration en suivant les instructions à l'écran.

- 6 Cliquez sur **Télécharger**.

- 7 Exécutez le fichier téléchargé.

- 8 Cliquez sur **Commencer la configuration**.



- 9 Suivez les instructions à l'écran.

- Ces opérations peuvent prendre du temps.
- Pour vous connecter aussi à un smartphone, voir « 7-b. Connexion à un smartphone » à la page 5.

Utilisation du CD-ROM d'installation pour Windows

Cliquez deux fois sur **EasySetup.exe** à partir du CD-ROM, puis continuez à partir de l'étape 3. Si vous ne disposez pas d'une connexion Internet, ouvrez le dossier **win** à partir du CD-ROM et cliquez deux fois sur **SETUP.exe**. Cette procédure permet d'installer le pilote d'imprimante.

7-b

Connexion à un smartphone

Si vous utilisez plusieurs smartphones, effectuez ces étapes sur chaque smartphone.



Préparez les éléments suivants avant de démarrer.

- 1 Activez le paramètre Wi-Fi sur votre smartphone.
 - 2 Connectez votre smartphone au routeur sans fil (si vous disposez d'un routeur sans fil).
- Pour plus d'informations, consultez la documentation de votre smartphone et du routeur sans fil.

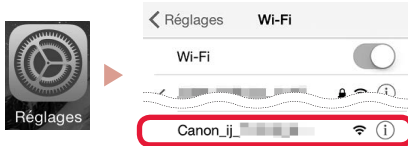
- 1 Installez l'application « Canon PRINT Inkjet/SELPHY » sur votre smartphone.

- Scannez le code QR qui apparaît à droite pour accéder au site Web Canon, puis téléchargez l'application.



- 2 Ouvrez les paramètres Wi-Fi de votre smartphone. Touchez le nom du réseau (SSID) qui commence par « Canon_ij_ ». Si « Canon_ij_ » n'apparaît pas, passez à l'étape 3.

(Exemple d'écran iOS)



- 3 Ouvrez l'application installée.



- 4 Suivez les instructions à l'écran fournies par l'application pour ajouter votre imprimante.

Une fois que vous avez ajouté votre imprimante, vous pouvez imprimer depuis votre smartphone. Pour imprimer des photos, voir « Chargement de papier photo » à la page 6.

7-c

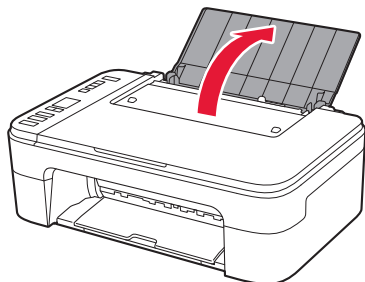
Aucun périphérique connecté

- 1 Appuyez sur le bouton **Arrêt (Stop)**.
- 2 Vérifiez que l'écran s'affiche comme ci-dessous.

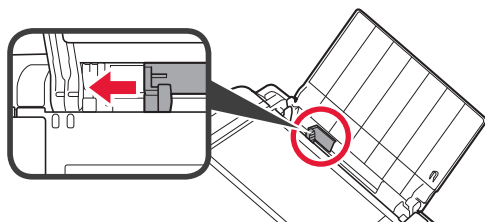


Chargement de papier photo

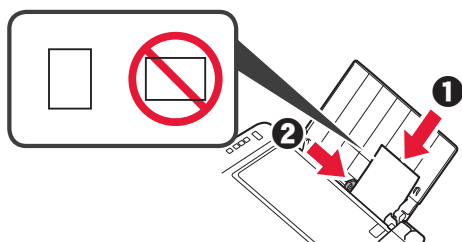
- 1 Ouvrez le support papier.



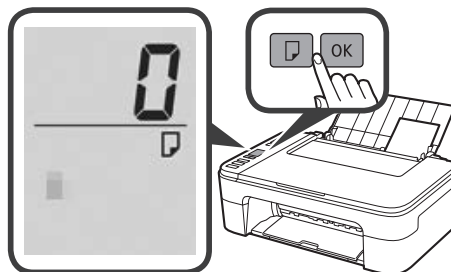
- 2 Faites glisser le guide papier vers la gauche.



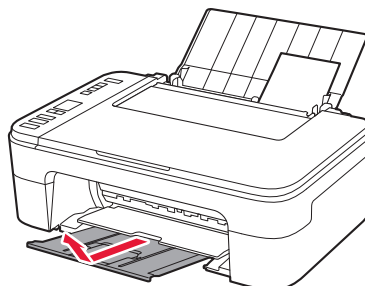
- 3
- 1 Chargez plusieurs feuilles de papier photo le long du bord droit face à imprimer vers le haut.
 - 2 Faites glisser le guide papier de manière à l'aligner avec le côté de la pile de papier.



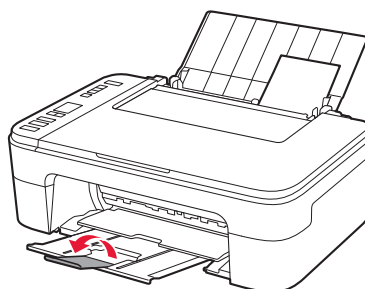
- 4 Appuyez sur le bouton **Sélectionner le papier (Paper Select)**, sélectionnez le papier, puis appuyez sur le bouton **OK**.



- 5 Retirez le bac de sortie papier.



- 6 Ouvrez l'extension du bac de sortie papier.



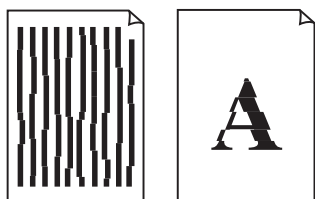
Si les résultats de l'impression ne sont pas satisfaisants

Si les lignes droites sont de travers ou les couleurs incohérentes, ou si les résultats de l'impression ne sont pas conformes à vos attentes, procédez à un Alignement tête d'impression.

Pour plus de détails, cliquez sur **Entretien** dans le **Manuel en ligne** et reportez-vous à **Si l'impression est pâle ou irrégulière > Alignement de la tête d'impression**.

Consultez la couverture arrière de ce manuel pour obtenir des informations sur l'ouverture du **Manuel en ligne**.

■ Lignes mal alignées



■ Couleurs inégales ou striées



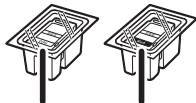
Onlineeinrichtung

<https://ij.start.canon>



1. Überprüfen des Lieferumfangs

● FINE-Patronen



Farbe Schwarz

● Netzkabel

● Installations-CD-ROM für Windows

● Sicherheitsinformationen und wichtige Hinweise

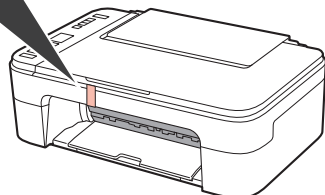
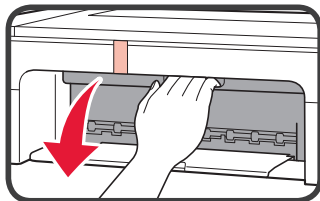
● Inbetriebnahme (dieses Handbuch)

2. Entfernen des Verpackungsmaterials

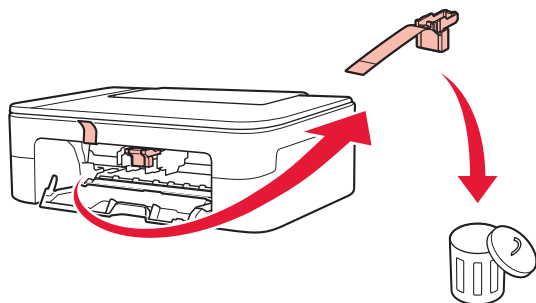


1 Entfernen und entsorgen Sie das gesamte Verpackungsmaterial und orangefarbene Klebeband von der Außenseite des Druckers.

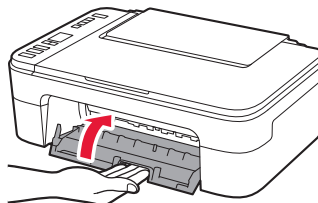
2 Öffnen Sie die Abdeckung.



3 Entfernen und entsorgen Sie das orangefarbene Klebeband sowie das Schutzmaterial aus dem Inneren.



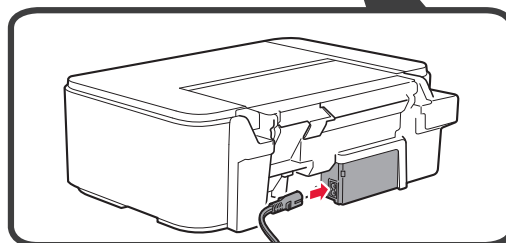
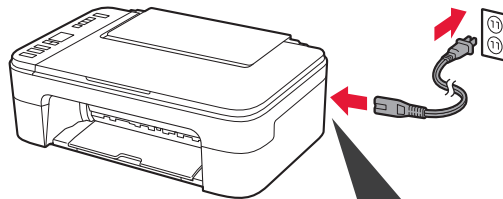
4 Schließen Sie die Abdeckung.



3. Einschalten des Druckers

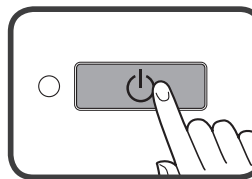


1 Schließen Sie das Netzkabel an.



Schließen Sie zum jetzigen Zeitpunkt keine weiteren Kabel an.

2 Drücken Sie die Taste EIN (ON).

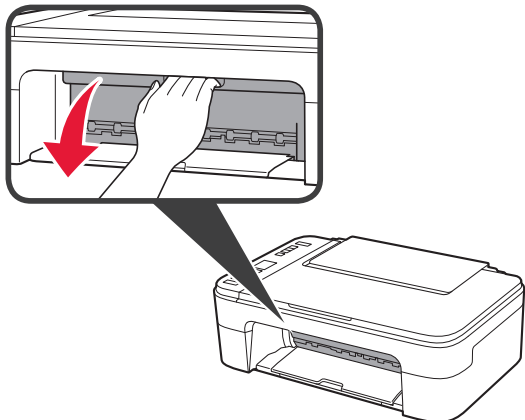


Wenn **E > 0 > 9** auf dem Bildschirm angezeigt wird, drücken Sie die Taste **EIN (ON)**, um den Drucker auszuschalten, und wiederholen Sie den Vorgang ab Schritt 2 unter „2. Entfernen des Verpackungsmaterials“.

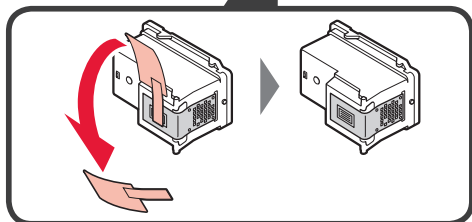
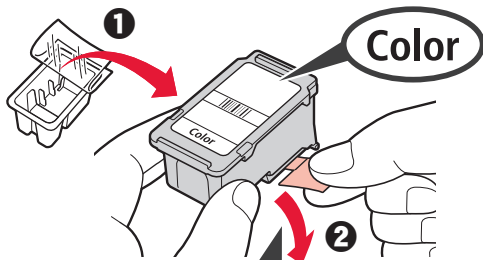
4. Einsetzen der FINE-Patronen



- 1 Öffnen Sie die Abdeckung.



- 2 ① Nehmen Sie die farbige FINE-Patrone aus dem Behälter.
② Entfernen Sie das Schutzband.

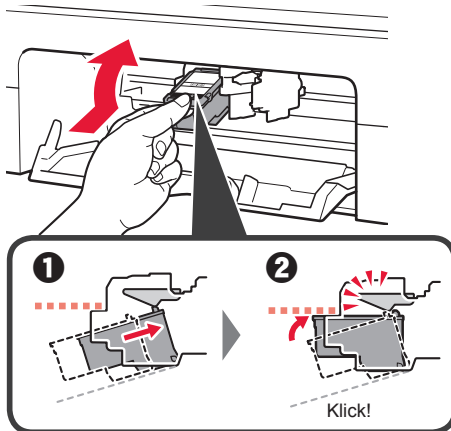


Nicht berühren.

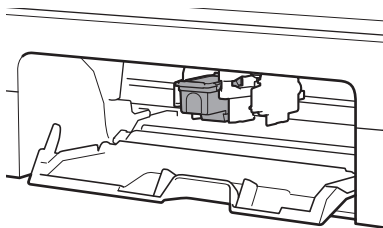
Achten Sie auf Tintenspuren auf dem Schutzband.

- 3 ① Setzen Sie die farbige FINE-Patrone mit einem leichten Aufwärtswinkel in die FINE-Patronen-Halterung auf der linken Seite ein.
② Drücken Sie die FINE-Patrone hinein und fest nach oben, bis sie hörbar einrastet.

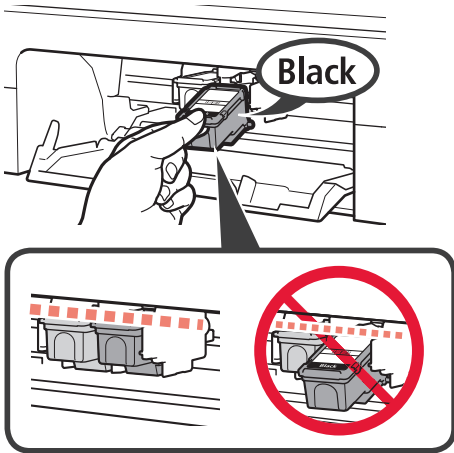
Stellen Sie sicher, dass die FINE-Patrone gerade und eben eingesetzt ist.



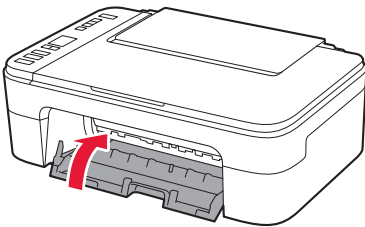
Stoßen Sie mit der Patrone nicht gegen die umgebenden Teile.



- 4 Wiederholen Sie die Schritte 2 bis 3, um die schwarze FINE-Patrone auf der rechten Seite einzusetzen.



- 5 Schließen Sie die Abdeckung.

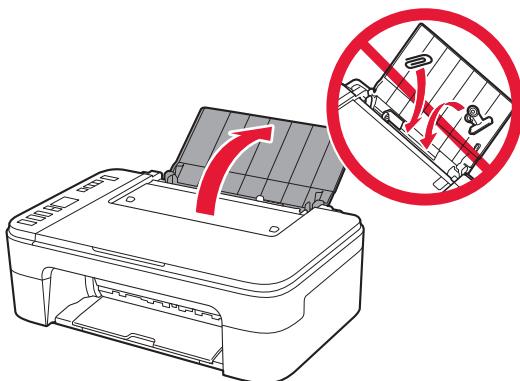


Wenn **E > 0 > 4** auf dem Bildschirm angezeigt wird, kehren Sie zu Schritt 3 unter „4. Einsetzen der FINE-Patronen“ zurück und bestätigen Sie, dass die farbige und die schwarze FINE-Patrone ordnungsgemäß eingesetzt sind.

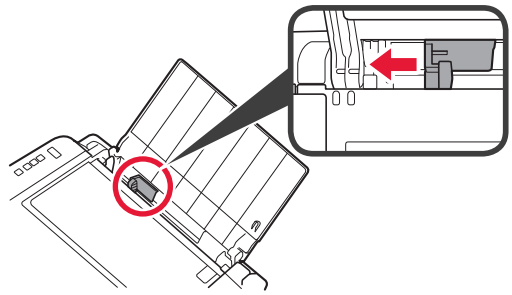
5. Einlegen von Papier



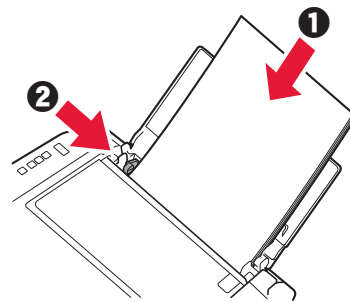
- 1 Öffnen Sie die Papierstütze.



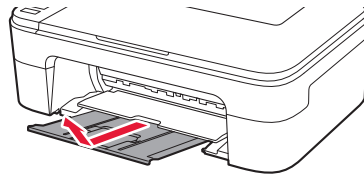
- 2 Schieben Sie die Papierführung nach links.



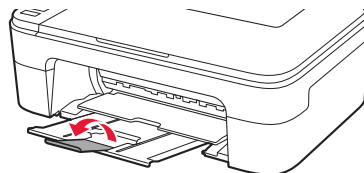
- 3
- 1 Legen Sie Normalpapier des Formats Letter oder A4 an der rechten Kante mit der bedruckbaren Seite nach oben ein.
 - 2 Verschieben Sie die Papierführung, um sie an der Seite des Papierstapels auszurichten.



- 4 Ziehen Sie das Papierausgabefach heraus.

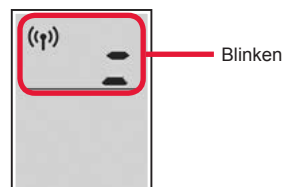


- 5 Öffnen Sie die Verlängerung des Ausgabefachs.



6. Vorbereiten der Verbindung

- 1 Bestätigen Sie, dass der Bildschirm wie unten dargestellt angezeigt wird.



Mit welchem Gerät stellen Sie eine Verbindung her?



Computer



Computer und
Smartphone



Smartphone

Verwenden Ihres Druckers ohne Anschluss weiterer Geräte. → „7-c“

7-a

Herstellen einer Verbindung mit einem Computer


Wenn Sie mehrere Computer verwenden, führen Sie diese Schritte auf jedem Computer aus.



- 1 Greifen Sie von einem Computer aus auf die Canon-Website zu.

<https://ij.start.canon>

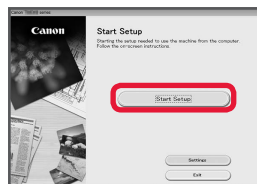


- 2 Wählen Sie  **Einrichten** aus.
- 3 Geben Sie den Modellnamen Ihres Druckers ein und klicken Sie auf **Los**.
- 4 Klicken Sie auf **Start**.
- 5 Klicken Sie auf **Wenn Sie Ihren Drucker bereits vorbereitet haben, wechseln Sie zu Verbindung herstellen**.

»»» Hinweis

Die folgenden Schritte gelten für Benutzer von Windows (ausgenommen Windows 10 in S mode) und Benutzer von macOS. Wenn Sie ein anderes Betriebssystem verwenden, fahren Sie mit der Einrichtung fort, indem Sie stattdessen die Anweisungen auf dem Bildschirm befolgen.

- 6 Klicken Sie auf **Herunterladen**.
- 7 Führen Sie die heruntergeladene Datei aus.
- 8 Klicken Sie auf **Setup starten (Start Setup)**.



- 9 Befolgen Sie die Anweisungen auf dem Bildschirm.
 - Diese Verfahren können einige Zeit dauern.
 - Um auch eine Verbindung mit einem Smartphone herzustellen, lesen Sie „7-b. Herstellen einer Verbindung mit einem Smartphone“ auf Seite 5.

Verwenden der Installations-CD-ROM für Windows

Doppelklicken Sie auf **EasySetup.exe** auf der CD-ROM und fahren Sie dann bei Schritt 3 fort. Wenn Sie keinen Internetzugang haben, öffnen Sie den Ordner **win** auf der CD-ROM und doppelklicken Sie auf **SETUP.exe**. Dadurch wird der Druckertreiber installiert.

7-b

Herstellen einer Verbindung mit einem Smartphone

Wenn Sie mehrere Smartphones verwenden, führen Sie diese Schritte auf jedem Smartphone aus.



Bereiten Sie Folgendes vor, bevor Sie beginnen.

- 1 Aktivieren Sie die Wi-Fi-Einstellung auf Ihrem Smartphone.
- 2 Stellen Sie eine Verbindung zwischen Ihrem Smartphone und dem Wireless Router her (wenn Sie über einen Wireless Router verfügen). Weitere Informationen finden Sie in den Handbüchern zu Ihrem Smartphone und dem Wireless Router.

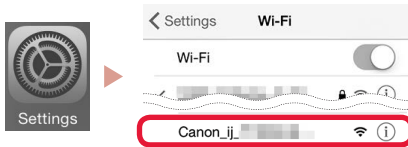
1 Installieren Sie die App „Canon PRINT Inkjet/SELPHY“ auf Ihrem Smartphone.

- Scannen Sie den QR-Code auf der rechten Seite, um die Canon-Website aufzurufen, und laden Sie dann die App herunter.



2 Öffnen Sie die Wi-Fi-Einstellungen auf Ihrem Smartphone. Tippen Sie auf den Namen des Netzwerks (SSID), das mit „Canon_ij_“ beginnt. Wenn „Canon_ij_“ nicht angezeigt wird, fahren Sie mit Schritt 3 fort.

(Beispiel für iOS-Bildschirm)



3 Öffnen Sie die installierte App.



4 Befolgen Sie die Anweisungen auf dem App-Bildschirm, um Ihren Drucker hinzuzufügen.

Sobald Sie Ihren Drucker hinzugefügt haben, können Sie über Ihr Smartphone drucken. Informationen zum Drucken von Fotos finden Sie unter „Einlegen von Fotopapier“ auf Seite 6.

7-c

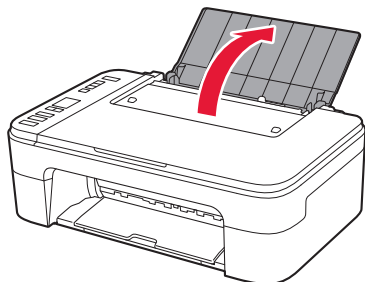
Kein Gerät verbunden

- 1 Drücken Sie die Taste **Stopp (Stop)**.
- 2 Bestätigen Sie, dass der Bildschirm wie unten dargestellt angezeigt wird.

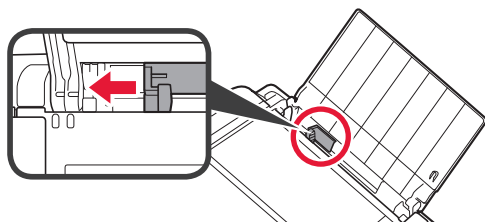


Einlegen von Fotopapier

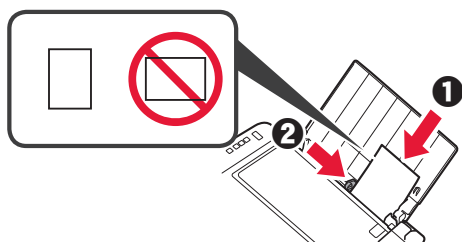
- 1 Öffnen Sie die Papierstütze.



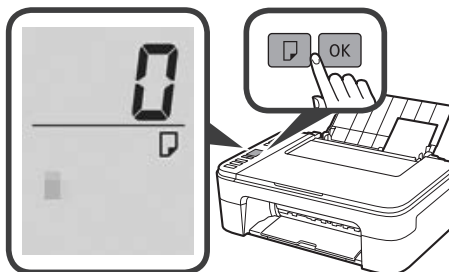
- 2 Schieben Sie die Papierführung nach links.



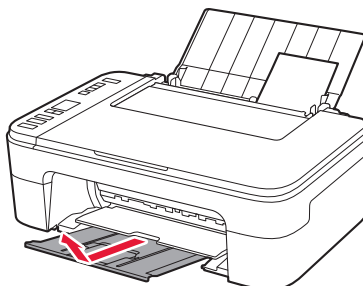
- 3 **1** Legen Sie mehrere Blätter Fotopapier an der rechten Kante mit der bedruckbaren Seite nach oben ein.
2 Verschieben Sie die Papierführung, um sie an der Seite des Papierstapels auszurichten.



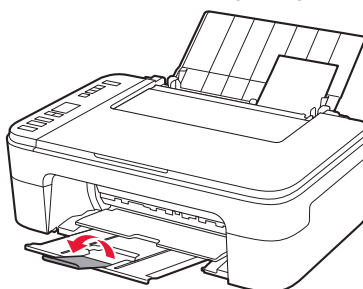
- 4 Drücken Sie die Taste **Papierauswahl (Paper Select)**, wählen Sie ein Papierformat und drücken Sie anschließend die Taste **OK**.



- 5 Ziehen Sie das Papierausgabefach heraus.



- 6 Öffnen Sie die Verlängerung des Ausgabefachs.



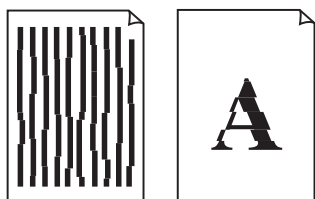
Wenn die Druckergebnisse nicht zufriedenstellend sind

Führen Sie eine Druckkopfausrichtung (Print Head Alignment) aus, wenn gerade Linien schief oder Farben ungleichmäßig gedruckt wurden oder die Druckergebnisse aus einem anderen Grund nicht Ihren Erwartungen entsprechen.

Klicken Sie auf **Wartung** im **Online-Handbuch** und lesen Sie den Abschnitt **Bei blassem oder ungleichmäßigem Druck > Ausrichten des Druckkopfs**, um weitere Informationen zu erhalten.

Informationen zum Öffnen des **Online-Handbuch** finden Sie auf der Rückseite dieses Handbuchs.

- Linien sind schief



- Farben sind ungleichmäßig oder weisen Streifen auf



Online installatie

<https://ij.start.canon>



1. Meegeleverde artikelen controleren

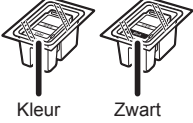
● FINE-cartridges

● Netsnoer

● Installatie-cd-rom voor Windows

● Veiligheidsinformatie en belangrijke informatie

● Aan de Slag-gids (deze handleiding)

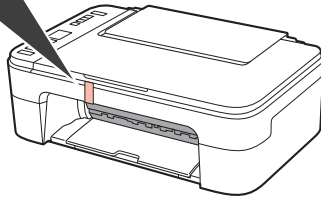
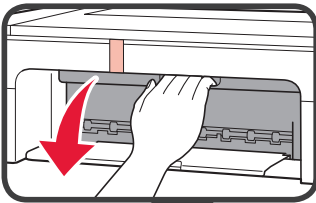


2. Verpakkingsmateriaal verwijderen

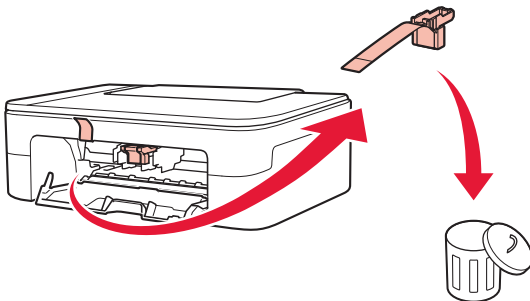


1 Verwijder het verpakkingsmateriaal en de oranje tape van de buitenkant van de printer en gooi dit weg.

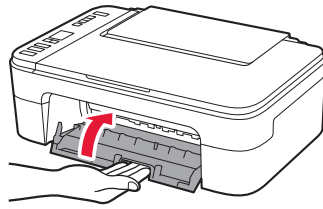
2 Open de klep.



3 Verwijder de oranje tape en het beschermende materiaal in de printer en gooi het weg.



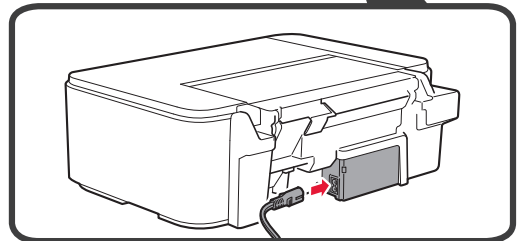
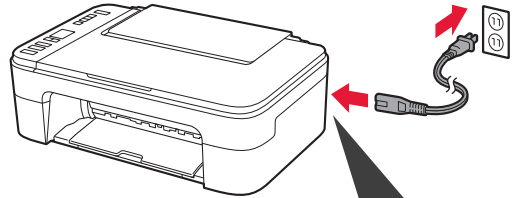
4 Sluit de klep.



3. De printer inschakelen

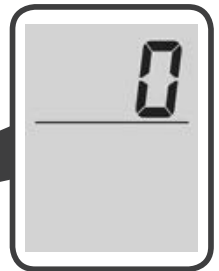
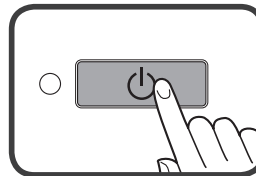


1 Sluit het netsnoer aan.



Sluit op dit moment nog geen andere kabels aan.

2 Druk op de knop **AAN (ON)**.

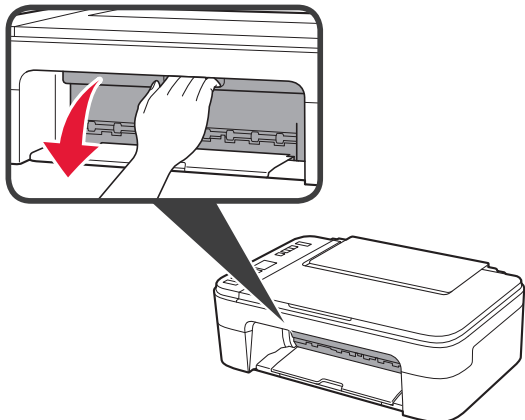


Als **E > 0 > 9** op het scherm wordt weergegeven, drukt u op de knop **AAN (ON)** om de printer uit te schakelen en begint u weer bij stap 2 van "2. Verpakkingsmateriaal verwijderen".

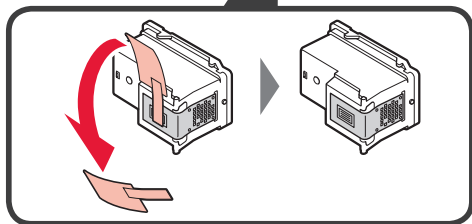
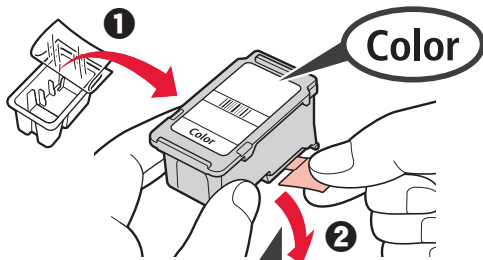
4. De FINE-cartridges installeren



1 Open de klep.



- 2
- 1 Haal de FINE-cartridge (kleur) uit de verpakking.
 - 2 Verwijder de beschermende tape.

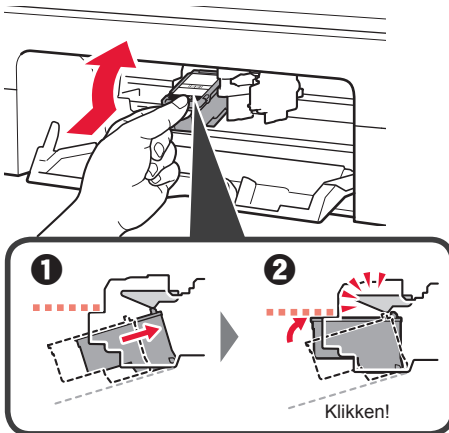


Niet aanraken.

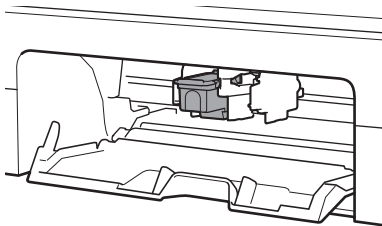
Wees voorzichtig met de inkt op de beschermtape.

- 3
- 1 Plaats de FINE-cartridge (kleur) in de FINE-cartridgehouder aan de linkerkant terwijl u deze iets omhoog kantelt.
 - 2 Duw de FINE-cartridge naar binnen en omhoog totdat deze stevig vast zit.

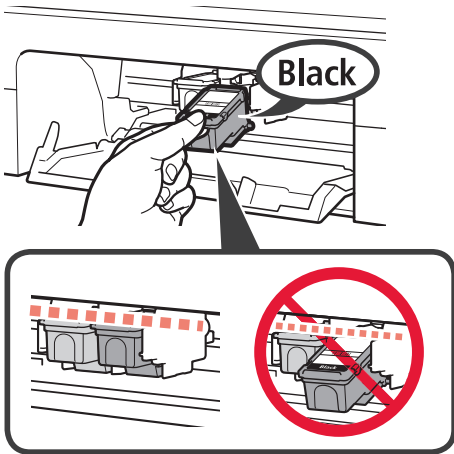
Controleer of de FINE-cartridge recht en horizontaal zit.



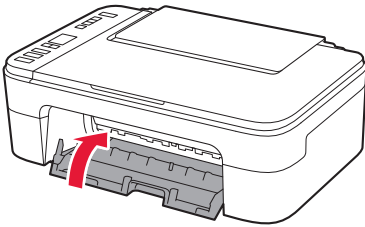
Stoot deze niet tegen de omringende onderdelen.



- 4 Herhaal stap 2 tot en met 3 om de zwarte FINE-cartridge aan de rechterkant te plaatsen.



- 5 Sluit de klep.

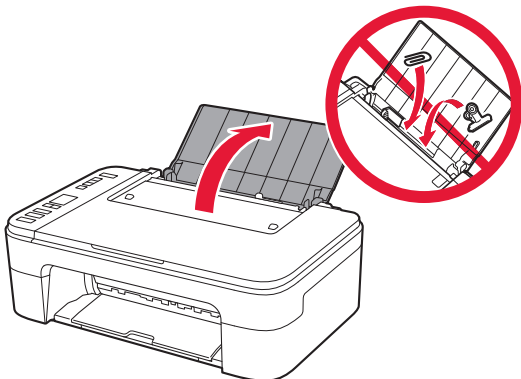


Als **E > 0 > 4** op het scherm wordt weergegeven, gaat u terug naar stap 3 van "4. De FINE-cartridges installeren" en controleert u of de FINE-cartridges (kleur en zwart) correct zijn geplaatst.

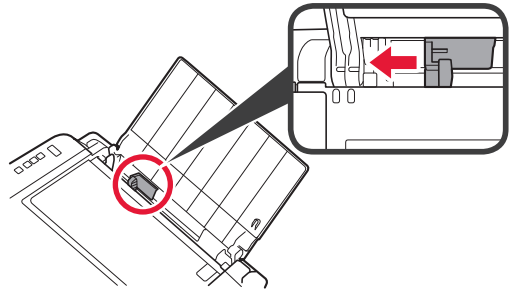
5. Papier plaatsen



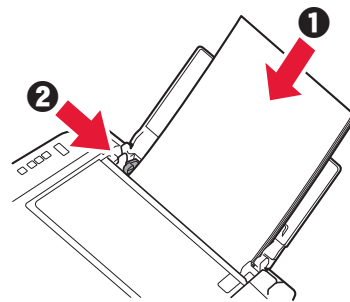
- 1 Open de papiersteun.



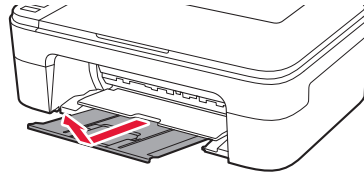
- 2 Schuif de papiergeleider naar links.



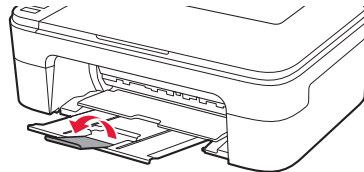
- 3
- 1 Plaats normaal papier van Letter- of A4-formaat tegen de rechterrاند met de afdrukszijde omhoog.
 - 2 Verschuif de papiergeleider en lijn deze uit met de zijkant van de papierstapel.



- 4 Trek de papieruitvoerlade uit.

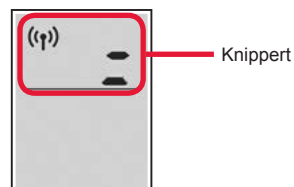


- 5 Open het verlengstuk van de uitvoerlade.



6. Voorbereiden op de verbinding

- 1 Controleer of het volgende scherm wordt weergegeven (zie hieronder).



Met welk apparaat maakt u verbinding?



Computer



Computer en
smartphone



Smartphone

Als u de printer wilt gebruiken zonder deze met andere apparaten te verbinden. → "7-c"

7-a

Verbinden met een computer

Als u meerdere computers gebruikt, voert u deze stappen uit op elke computer.



- 1 Ga naar de Canon-website op een computer.

<https://ij.start.canon>



- 2 Selecteer  **Installatie**.

- 3 Voer de modelnaam van de printer in en klik op **Ga**.

- 4 Klik op **Start**.

- 5 Klik op **Als u uw printer al hebt voorbereid, gaat u naar Verbinden**.

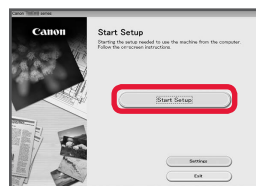
▶▶▶ Opmerking

De volgende stappen zijn bedoeld voor gebruikers van Windows (behalve Windows 10 in S mode) en macOS. Voor andere besturingssystemen gaat u verder met de installatie door in plaats daarvan de instructies op het scherm uit te voeren.

- 6 Klik op **Downloaden**.

- 7 Voer het gedownloade bestand uit.

- 8 Klik op **Beginnen met instellen (Start Setup)**.



- 9 Volg de instructies op het scherm.

- Deze handelingen kunnen enige tijd duren.
- Als u ook verbinding wilt maken met een smartphone, raadpleegt u "7-b. Verbinden met een smartphone" op pagina 5.

De installatie-cd-rom gebruiken voor Windows

Dubbelklik op **EasySetup.exe** vanaf de cd-rom en ga verder vanaf stap 3. Als u geen internetverbinding hebt, opent u de map **win** van de cd-rom en dubbelklikt u op **SETUP.exe**. Hiermee wordt het printerstuurprogramma geïnstalleerd.

7-b

Verbinden met een smartphone

Als u meerdere smartphones gebruikt, voert u deze stappen uit op elke smartphone.



Bereid het volgende voor voordat u begint.

- 1 Schakel de Wi-Fi-instelling op uw smartphone in.
- 2 Verbind uw smartphone met de draadloze router (als u een draadloze router gebruikt). Raadpleeg de handleiding van uw smartphone en draadloze router voor meer informatie.

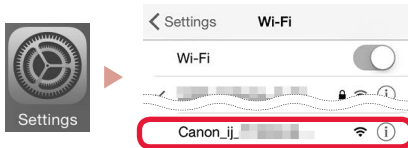
- 1 Installeer de app "Canon PRINT Inkjet/SELPHY" op uw smartphone.

- Scan de QR-code rechts om naar de Canon-website te gaan en de app te downloaden.



- 2 Open de Wi-Fi-instellingen op uw smartphone. Tik op de netwerknaam (SSID) die met "Canon_ij_" begint. Als "Canon_ij_" niet wordt weergegeven, gaat u verder met stap 3.

(Voorbeeld van iOS-scherm)



- 3 Open de geïnstalleerde app.



- 4 Volg de instructies op het scherm in de app om de printer toe te voegen.

Nadat u de printer hebt toegevoegd, kunt u afdrucken vanaf uw smartphone. Als u foto's wilt afdrucken, raadpleegt u "Fotopapier plaatsen" op pagina 6.

7-c

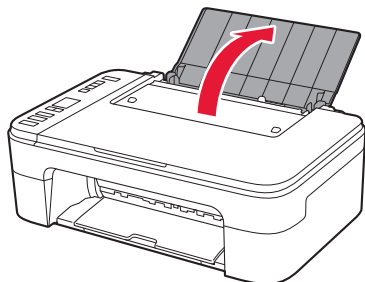
Geen apparaat verbonden

- 1 Druk op de knop **Stoppen (Stop)**.
- 2 Controleer of het volgende scherm wordt weergegeven (zie hieronder).

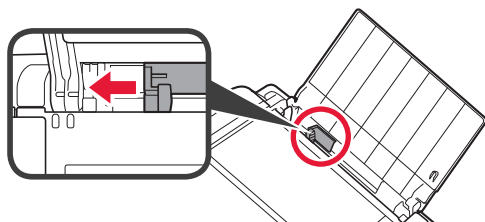


Fotopapier plaatsen

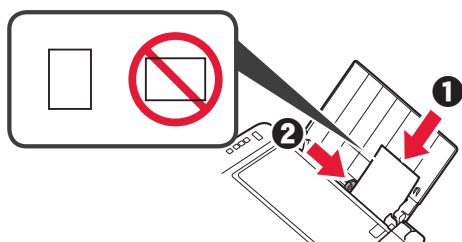
- 1 Open de papiersteun.



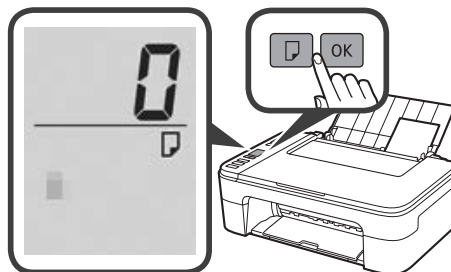
- 2 Schuif de papiergeleider naar links.



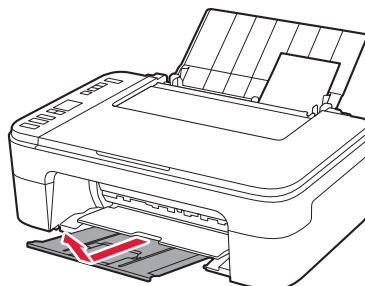
- 3 ❶ Plaats meerdere vellen fotopapier tegen de rechterraand met de afdrukzijde omhoog.
❷ Verschuif de papiergeleider en lijn deze uit met de zijkant van de papierstapel.



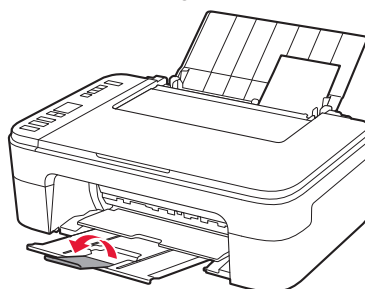
- 4 Druk op de knop **Papier selecteren (Paper Select)**, selecteer een papiermaat en druk op de knop **OK**.



- 5 Trek de papieruitvoelade uit.



- 6 Open het verlengstuk van de uitvoelade.



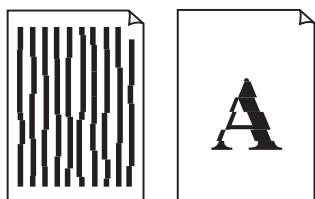
Als de afdrukresultaten onvoldoende zijn

Als de afdrukresultaten onvoldoende zijn Uitlijning printkop (Print Head Alignment) uit als rechte lijnen niet recht zijn, als kleuren inconsistent zijn of als de afdrukresultaten anderszins niet zijn zoals u verwachtte.

Klik voor meer informatie op **Onderhoud** in de **Online handleiding** en lees **Als afdrucken vaag of ongelijkmatig zijn > De Printkop uitlijnen**.

Op de achterkant van deze handleiding kunt u lezen hoe u de **Online handleiding** opent.

- Lijnen zijn niet recht



- Kleuren zijn ongelijkmatig of gevlekt

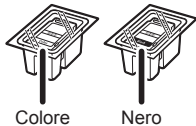


Impostazione online
<https://ij.start.canon>



1. Verifica degli elementi inclusi

- Cartucce FINE
- Cavo di alimentazione
- CD-ROM di installazione per Windows
- Informazioni importanti e sulla sicurezza
- Guida Rapida (questo manuale)



Colore

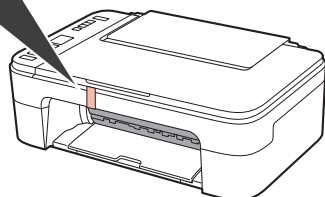
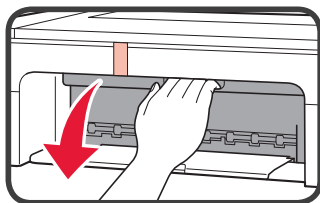
Nero

2. Rimozione del materiale da imballaggio

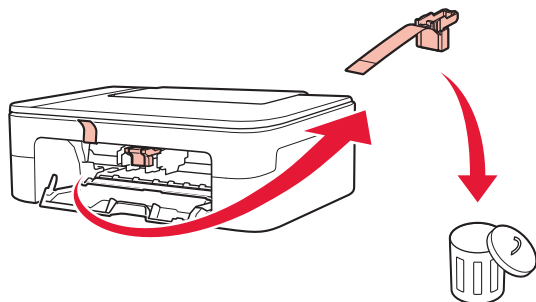


1 Rimuovere e disfarsi dell'eventuale materiale da imballaggio e del nastro arancione all'esterno della stampante.

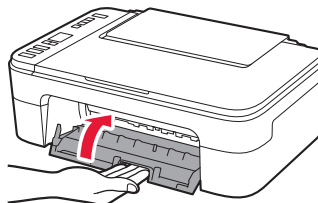
2 Aprire il coperchio.



3 Rimuovere e disfarsi del nastro arancione e del materiale di protezione all'interno.



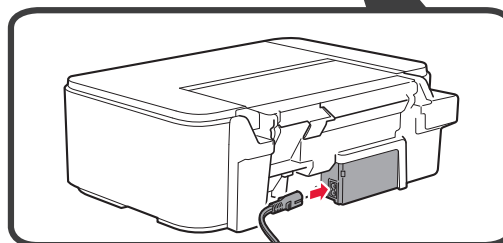
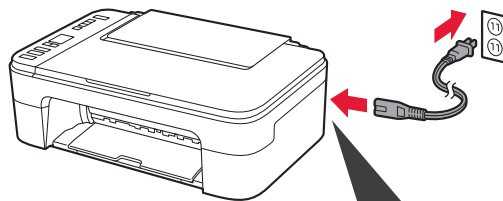
4 Chiudere il coperchio.



3. Accensione della stampante

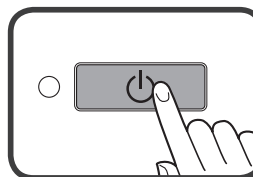


1 Collegare il cavo di alimentazione.



In questa fase, non collegare altri cavi.

2 Premere il pulsante ON.

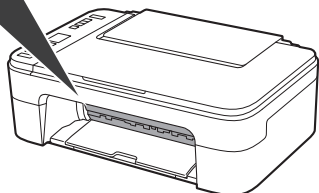
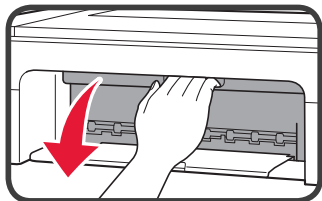


Se sulla schermata appare **E > 0 > 9**, premere il pulsante **ON** per spegnere la stampante e ripetere dal passo 2 di "2. Rimozione del materiale da imballaggio".

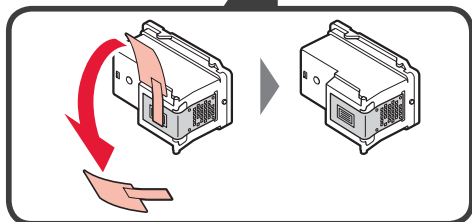
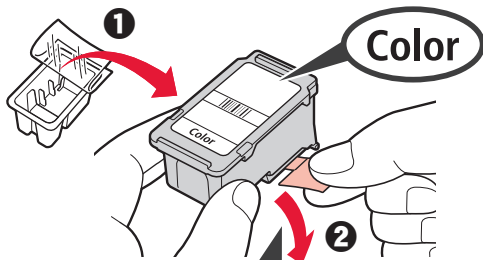
4. Installazione delle cartucce FINE



1 Aprire il coperchio.



- 2
- 1 Rimuovere la cartuccia FINE del colore dal contenitore.
 - 2 Rimuovere il nastro di protezione.

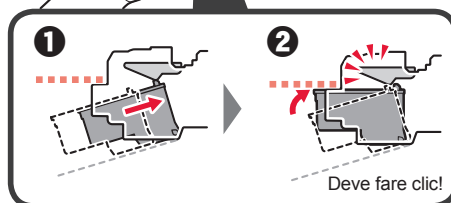
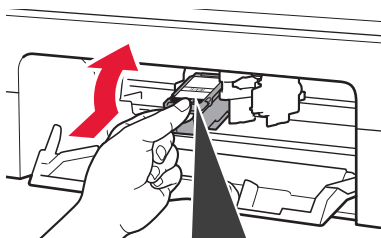


Non toccare.

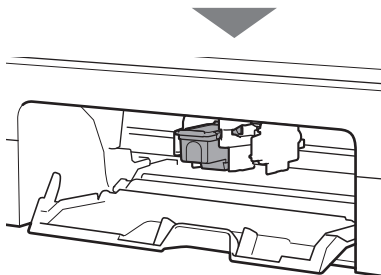
Prestare attenzione all'inchiostro presente sul nastro protettivo.

- 3
- 1 Inserire la cartuccia FINE del colore nel supporto cartuccia FINE sul lato sinistro a una leggera angolazione verso l'alto.
 - 2 Spingere con fermezza la cartuccia FINE all'interno e verso l'alto finché non scatta in posizione.

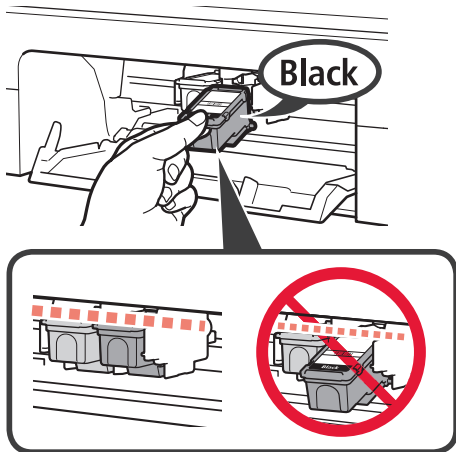
Confermare che la cartuccia FINE sia diritta e in piano.



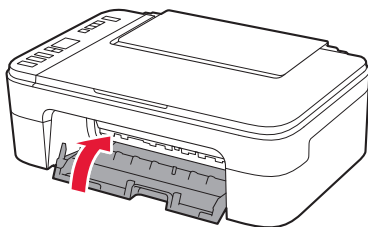
Non farlo urtare con le parti circostanti.



- 4 Ripetere i passi da 2 a 3 per installare la cartuccia FINE del nero sul lato destro.



- 5 Chiudere il coperchio.

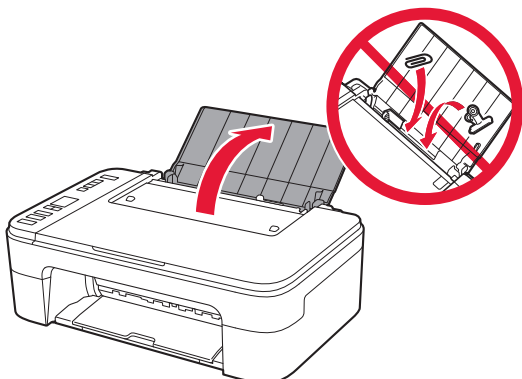


Se sulla schermata appare **E > 0 > 4**, tornare al passo 3 di "4. Installazione delle cartucce FINE" e verificare che le cartucce FINE del nero e del colore siano correttamente installate.

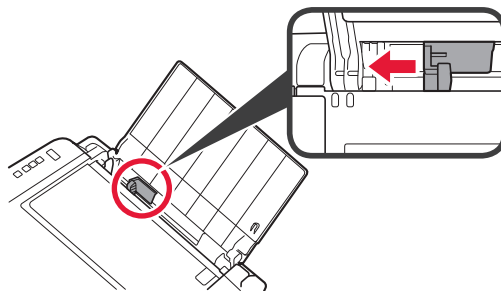
5. Caricamento della carta



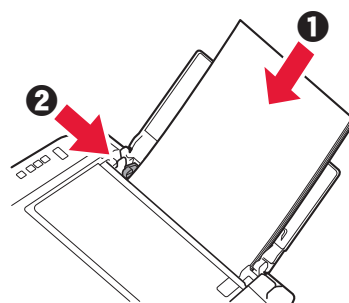
- 1 Aprire il supporto per la carta.



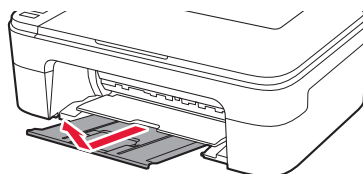
- 2 Far scorrere la guida della carta verso sinistra.



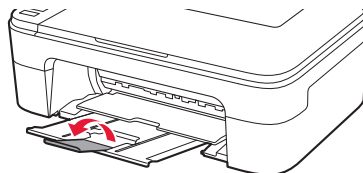
- 3
- 1 Caricare carta comune in formato Letter o A4 contro il margine destro con il lato di stampa rivolto verso l'alto.
 - 2 Far scorrere la guida della carta per allinearla con il lato della risma di carta.



- 4 Estrarre il vassoio di uscita della carta.

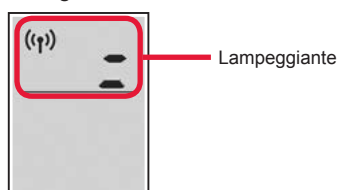


- 5 Aprire l'estensione del vassoio di uscita.



6. Preparazione per la connessione

- 1 Verificare che la schermata appaia come mostrato di seguito.



Quale periferica si sta connettendo?



Computer



Computer
e smartphone



Smartphone

Per utilizzare la stampante senza connettersi ad altre periferiche. → "7-c"

7-a

Connessione a un computer


Se si utilizzano più computer, eseguire questi passaggi su ciascun computer.



- 1 Accedere al sito Web di Canon da un computer.

<https://ij.start.canon>

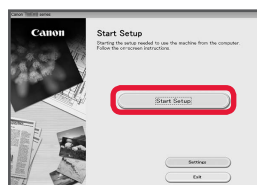


- 2 Selezionare  **Impostazione**.
- 3 Immettere il nome del modello della stampante e fare clic su **Vai**.
- 4 Fare clic su **Avvio**.
- 5 Fare clic su **Se la stampante è già preparata, connettersi**.

▶▶▶ Nota

Le seguenti procedure sono destinate agli utenti Windows (tranne Windows 10 in S mode) e macOS. Per gli altri sistemi operativi, continuare l'impostazione seguendo le istruzioni visualizzate.

- 6 Fare clic su **Scarica**.
- 7 Eseguire il file scaricato.
- 8 Fare clic su **Avvia impostazione (Start Setup)**.



- 9 Seguire le istruzioni visualizzate sullo schermo.
 - Queste operazioni possono richiedere del tempo.
 - Per connettersi anche a uno smartphone, vedere "7-b. Connessione a uno smartphone" a pagina 5.

Utilizzo del CD-ROM di installazione per Windows

Fare doppio clic su **EasySetup.exe** nel CD-ROM, quindi continuare dal passo 3. Se non si dispone di una connessione Internet, aprire la cartella **win** nel CD-ROM e fare doppio clic su **SETUP.exe**. Verrà installato il driver della stampante.

7-b

Connessione a uno smartphone

Se si utilizzano più smartphone, eseguire questi passaggi su ciascuno smartphone.



Prima di iniziare, effettuare quanto segue.

- 1 Abilitare l'impostazione Wi-Fi sullo smartphone.
 - 2 Connettere lo smartphone al router wireless (se si dispone di un router wireless).
- Per ulteriori informazioni, fare riferimento ai manuali dello smartphone e del router wireless.

- 1 Installare l'app "Canon PRINT Inkjet/SELPHY" sullo smartphone.

- Eseguire la scansione del codice QR sulla destra per accedere al sito Web di Canon e scaricare l'app.



- 2 Aprire le impostazioni Wi-Fi dello smartphone. Toccare il nome di rete (SSID) che inizia con "Canon_ij_". Se "Canon_ij_" non appare, procedere al passo 3.

(Esempio di schermata iOS)



- 3 Aprire l'app installata.



- 4 Per aggiungere la stampante, attenersi alle istruzioni visualizzate nell'app.

Una volta aggiunta la stampante, è possibile stampare dallo smartphone. Per stampare foto, vedere "Caricamento della carta fotografica" a pagina 6.

7-c

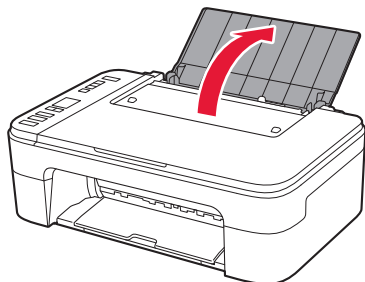
Nessuna periferica connessa

- 1 Premere il pulsante **Stop**.
- 2 Verificare che la schermata appaia come mostrato di seguito.

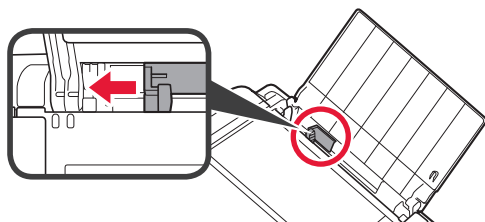


Caricamento della carta fotografica

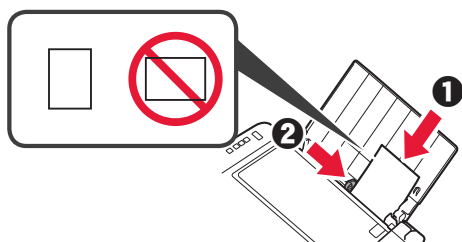
- 1 Aprire il supporto per la carta.



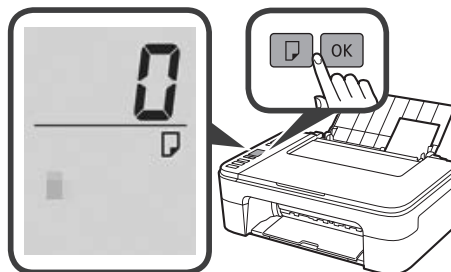
- 2 Far scorrere la guida della carta verso sinistra.



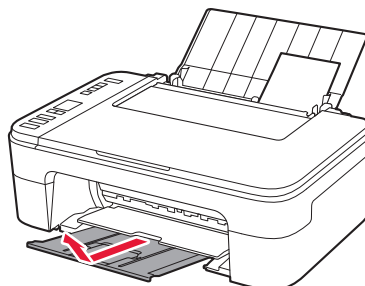
- 3
- 1 Caricare diversi fogli di carta fotografica contro il margine destro con il lato di stampa rivolto verso l'alto.
 - 2 Far scorrere la guida della carta per allinearla con il lato della risma di carta.



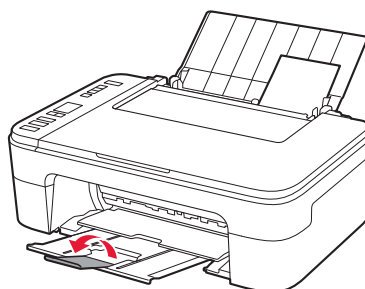
- 4 Premere il pulsante **Selezione carta (Paper Select)**, selezionare un formato carta, quindi premere il pulsante **OK**.



- 5 Estrarre il vassoio di uscita della carta.



- 6 Aprire l'estensione del vassoio di uscita.



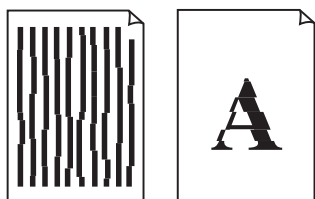
Se i risultati di stampa non sono soddisfacenti

Eseguire Allineamento testina di stampa (Print Head Alignment) se le linee rette risultano deformate, i colori risultano inconsistenti o i risultati di stampa sono diversi da quanto previsto.

Per ulteriori informazioni, fare clic su **Manutenzione** nel **Manuale online** e fare riferimento a **Se la stampa è sbiadita o irregolare > Allineamento della posizione della Testina di stampa**.

Fare riferimento alla copertina posteriore del presente manuale per informazioni su come aprire il **Manuale online**.

- Linee non allineate



- Colori non uniformi o con striature



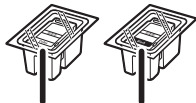
Configuração On-line

<https://ij.start.canon>



1. Verificando os itens incluídos

- Cartuchos FINE



Colorido

Preto

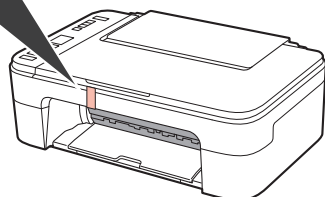
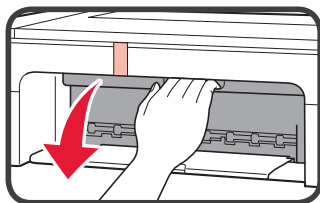
- Cabo de alimentação
- CD-ROM de instalação para Windows
- Informações Importantes e Sobre Segurança
- Para Começar (este manual)

2. Removendo os materiais da embalagem

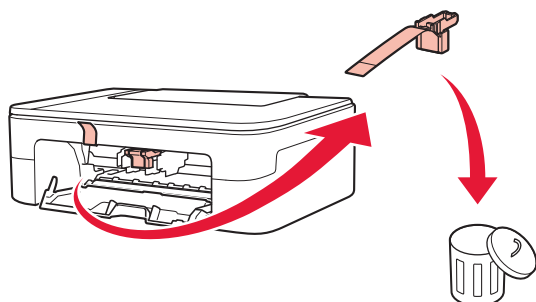


- 1 Remova e descarte qualquer material de embalagem e a fita laranja da parte exterior da impressora.

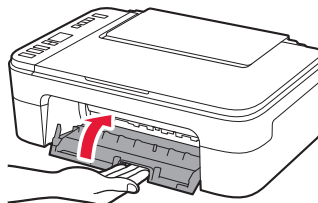
- 2 Abra a tampa.



- 3 Remova e descarte a fita laranja e o material de proteção interno.



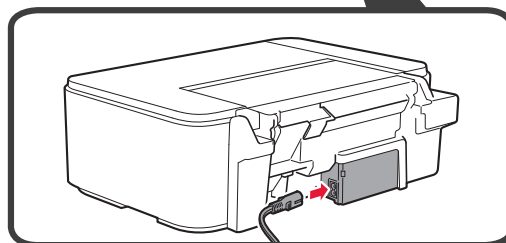
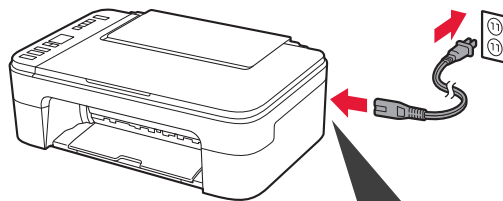
- 4 Feche a tampa.



3. Ligando a Impressora

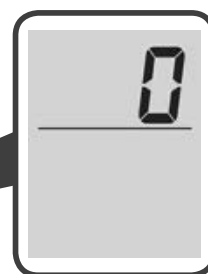
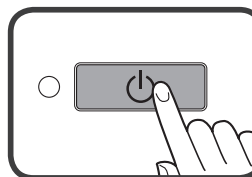


- 1 Conecte o cabo de alimentação.



Não conecte quaisquer outros cabos ainda.

- 2 Pressione o botão **ATIVADO (ON)**.

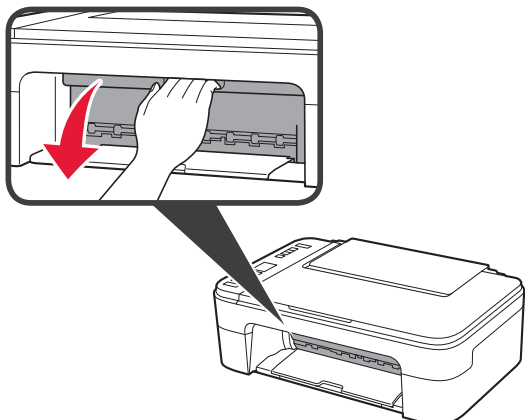


Se **E > 0 > 9** aparecer na tela, pressione o botão **ATIVADO (ON)** para desligar a impressora e, em seguida, refaça a partir da etapa 2 do "2. Removendo os materiais da embalagem".

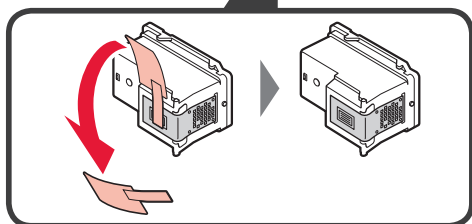
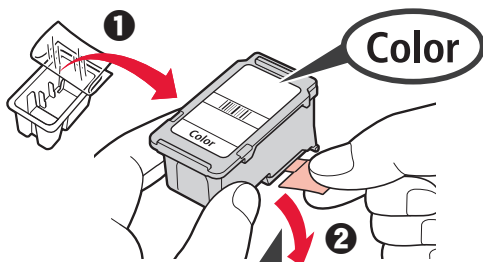
4. Instalando os Cartuchos FINE



1 Abra a tampa.



- ### 2
- 1 Remova o cartucho FINE colorido do recipiente.
 - 2 Remova a fita de proteção.

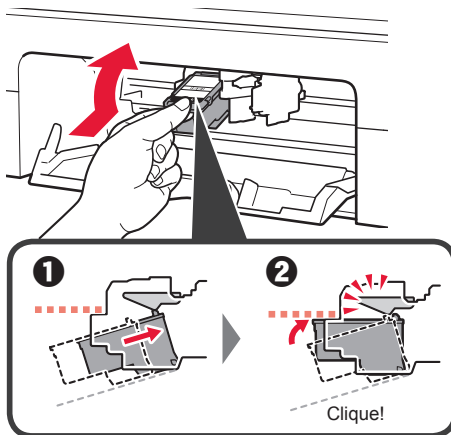


Não toque.

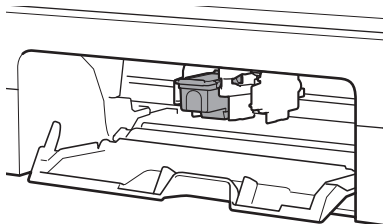
Cuidado com a tinta na fita de proteção.

- ### 3
- 1 Insira o cartucho FINE colorido no suporte do cartucho FINE do lado esquerdo em um ângulo ligeiramente inclinado para cima.
 - 2 Empurre o cartucho FINE para dentro e para cima firmemente até ele se encaixar.

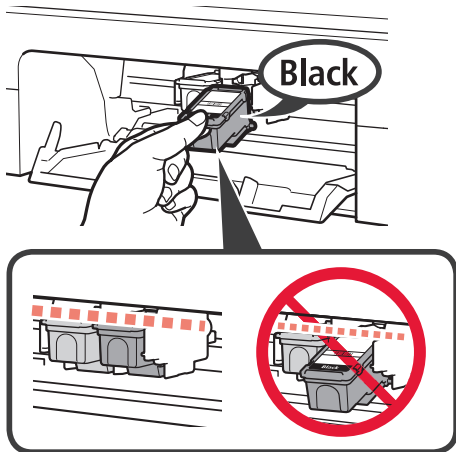
Confirme se o cartucho FINE está reto e nivelado.



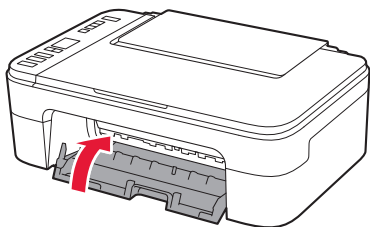
Não bata-a contra as peças em volta.



- 4 Repita as etapas 2 a 3 para instalar o cartucho FINE preto no lado direito.



- 5 Feche a tampa.

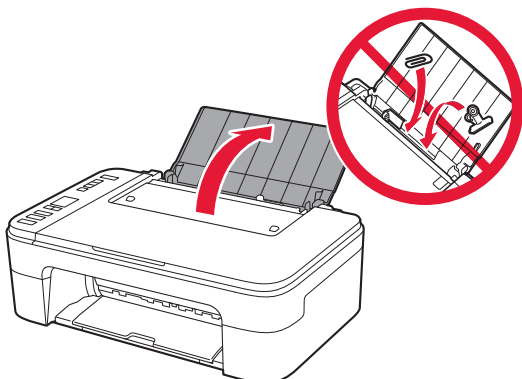


Se **E > 0 > 4** aparecer na tela, volte para a etapa 3 do "4. Instalando os Cartuchos FINE" e verifique se os cartuchos FINE colorido e preto estão instalados corretamente.

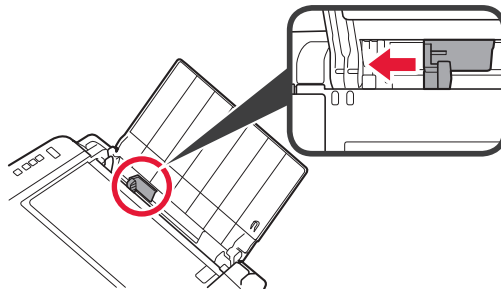
5. Colocando papel



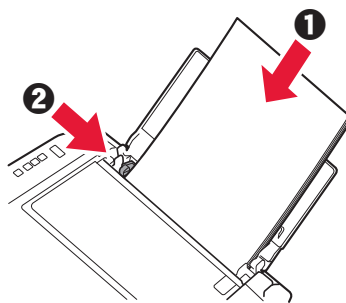
- 1 Abra o suporte de papel.



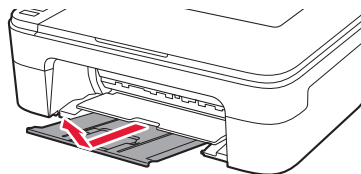
- 2 Deslize a guia do papel para a esquerda.



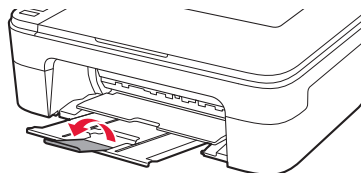
- 3
- 1 Coloque o papel Letter comum ou tamanho A4 contra a borda direita com o lado a ser impresso voltado para cima.
 - 2 Deslize a guia do papel para alinhá-la à lateral da pilha de papel.



- 4 Puxe para fora a bandeja de saída do papel.

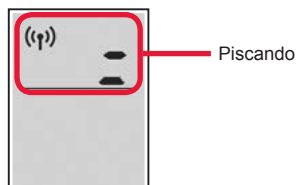


- 5 Abra a extensão da bandeja de saída.



6. Preparando para a conexão

- 1 Verifique se a tela aparece como mostrado abaixo.



Qual dispositivo você está conectando?



Computador



Computador e
smartphone



Smartphone

Para usar sua impressora sem conectá-la a nenhum outro dispositivo.
→ "7-c"

7-a

Conectando a um Computador

Se você estiver usando vários computadores, execute estas etapas em cada computador.



- 1 Acesse o site Canon de um computador.

<https://ij.start.canon>



- 2 Selecione  **Configurar**.

- 3 Insira o nome do modelo da sua impressora e clique em **Ir**.

- 4 Clique em **Iniciar**.

- 5 Clique em **Se você já tiver preparado a sua impressora, vá para Conectar**.

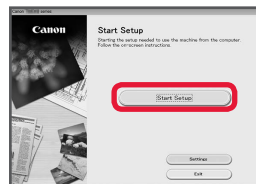
▶▶▶ Nota

As seguintes etapas são para Windows (exceto Windows 10 in S mode) e usuários do macOS. Para outros sistemas operacionais, continue a configuração seguindo as instruções na tela.

- 6 Clique em **Download**.

- 7 Execute o arquivo baixado.

- 8 Clique em **Iniciar configuração (Start Setup)**.



- 9 Siga as instruções na tela.

- Estas operações podem levar algum tempo.
- Para conectar a um smartphone, consulte "7-b. Conectando a um smartphone" na página 5.

Usando o CD-ROM de instalação para Windows

Clique duas vezes em **EasySetup.exe** no CD-ROM e, em seguida, continue a partir da etapa 3.

Se você não tiver uma conexão com a internet, abra a pasta **win** no CD-ROM clique duas vezes em **SETUP.exe**. Isso instalará o driver da impressora.

7-b

Conectando a um smartphone

Se você estiver usando vários smartphones, execute estas etapas em cada smartphone.



Prepare o seguinte antes de iniciar.

- 1 Ative a configuração Wi-Fi no seu smartphone.
- 2 Conecte seu smartphone ao roteador sem fio (se você tiver um roteador sem fio).
Consulte os manuais do seu smartphone e do seu roteador sem fio para obter mais detalhes.

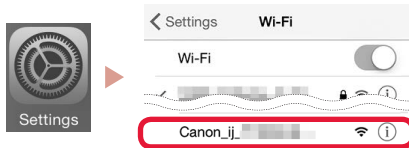
- 1 Instale o aplicativo "Canon PRINT Inkjet/SELPHY" no seu smartphone.

- Digitalize o código QR exibido à direita para acessar o site da Canon e fazer download do aplicativo.



- 2 Abra as configurações do seu Wi-Fi smartphone. Toque no nome da rede (SSID) que começa com "Canon_ij_". Se "Canon_ij_" não aparecer, prossiga para a etapa 3.

(Exemplo da tela do iOS)



- 3 Abra o aplicativo instalado.



- 4 Siga as instruções na tela do aplicativo para adicionar sua impressora.

Depois que você adicionar a impressora, poderá imprimir a partir do smartphone.
Para imprimir fotos, consulte "Colocando Papel Fotográfico" na página 6.

7-c

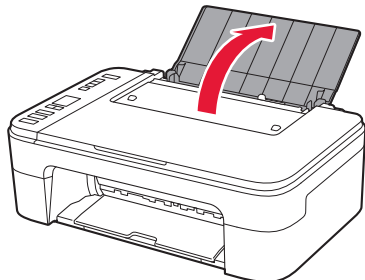
Nenhum dispositivo conectado

- 1 Pressione o botão **Parar (Stop)**.
- 2 Verifique se a tela aparece como mostrado abaixo.

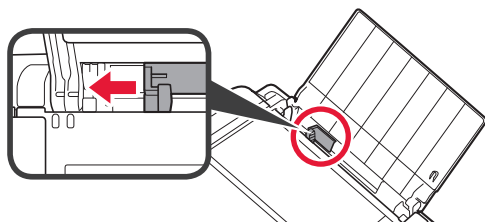


Colocando Papel Fotográfico

- 1 Abra o suporte de papel.

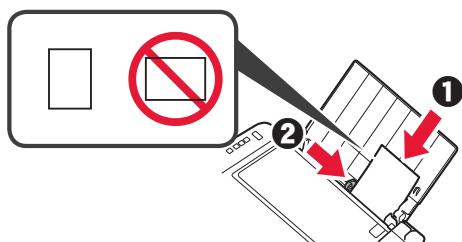


- 2 Deslize a guia do papel para a esquerda.

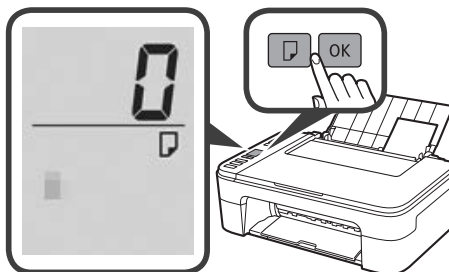


- 3 ❶ Coloque várias folhas de papel fotográfico contra a borda direita com o lado a ser impresso voltado para cima.

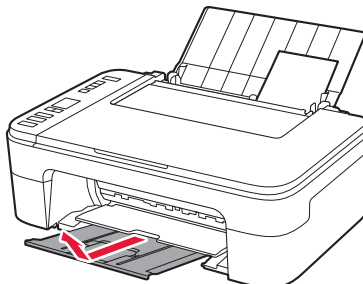
- ❷ Deslize a guia do papel para alinhá-la à lateral da pilha de papel.



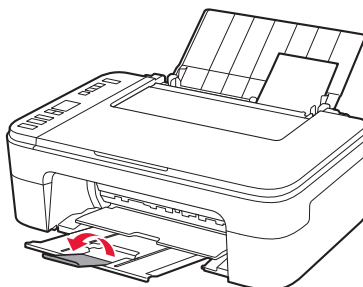
- 4 Pressione o botão **Selecionar papel (Paper Select)** selecione um tamanho de papel e, em seguida, pressione o botão **OK**.



- 5 Puxe para fora a bandeja de saída do papel.



- 6 Abra a extensão da bandeja de saída.



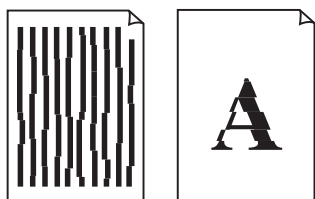
Se os Resultados da Impressão Forem Insatisfatórios

Execute Alinhamento da cabeça de impressão (Print Head Alignment) se as linhas retas estiverem tortas ou se as cores estiverem inconsistentes, ou se os resultados da impressão não forem como esperados.

Para obter detalhes, clique em **Manutenção** no **Manual On-line** e consulte **Se a Impressão Estiver Menos Nítida ou Irregular > Alinhando a Cabeça de Impressão**.

Consulte a contracapa deste manual para saber como abrir o **Manual On-line**.

■ Linhas desalinhadas



■ Cores irregulares ou estriadas



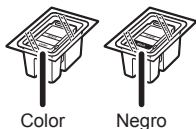
Configuración en línea

<https://ij.start.canon>



1. Comprobar los elementos suministrados

● Cartuchos FINE



Color

Negro

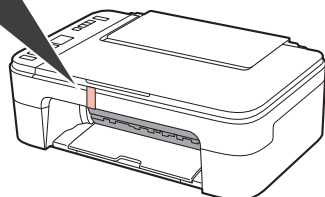
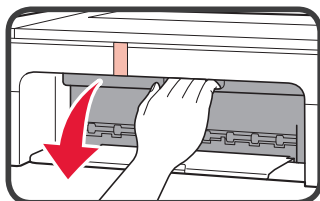
- Cable de alimentación
- CD-ROM de instalación para Windows
- Información de seguridad e información importante
- Guía de inicio (este manual)

2. Retirar los materiales de protección

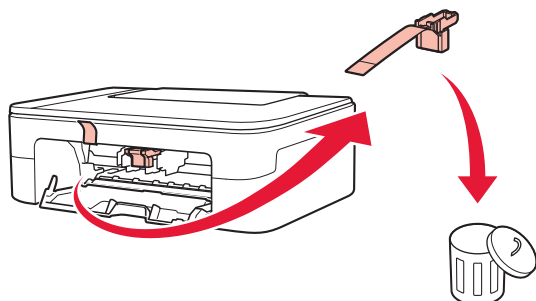


1 Retire y tire todos los materiales de protección y la cinta naranja del exterior de la impresora.

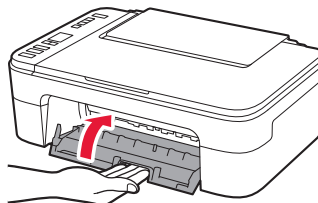
2 Abra la cubierta.



3 Retire y tire la cinta naranja y el material de protección que hay dentro.



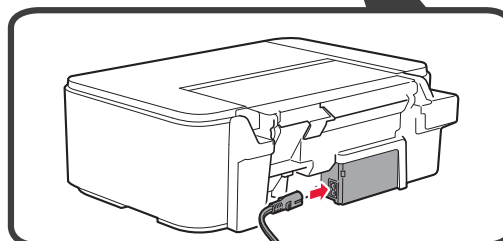
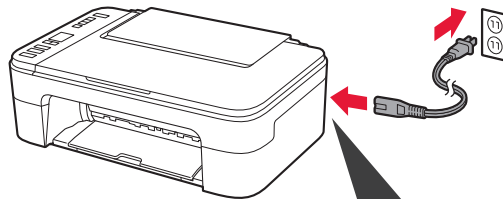
4 Cierre la cubierta.



3. Encender la impresora

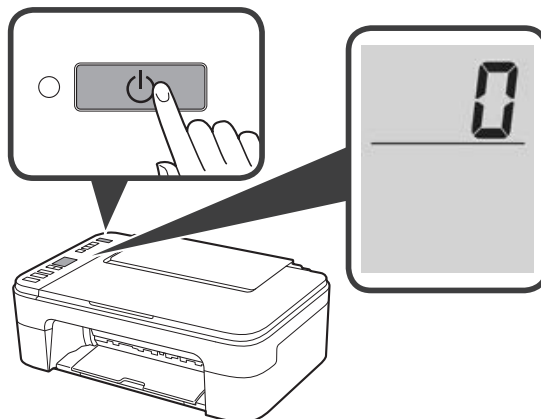


1 Conecte el cable de alimentación.



En este momento, no conecte ningún otro cable.

2 Pulse el botón **ACTIVADO (ON)**.

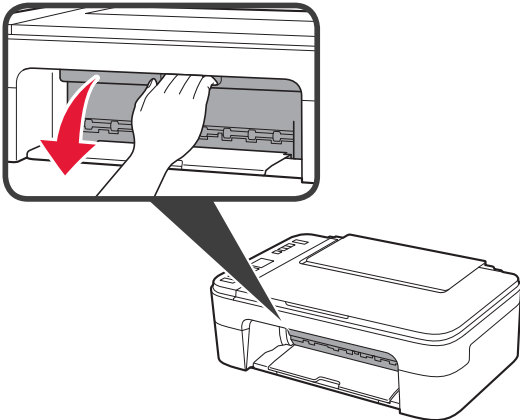


Si en la pantalla aparece **E > 0 > 9**, pulse el botón **ACTIVADO (ON)** para apagar la impresora y repita desde el paso 2 de "2. Retirar los materiales de protección".

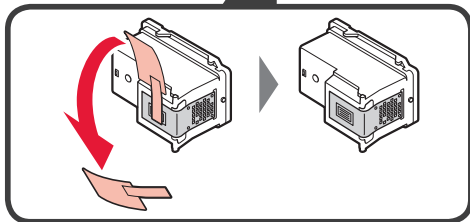
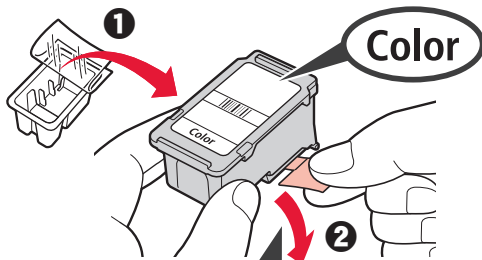
4. Instalar los cartuchos FINE



- 1 Abra la cubierta.



- 2 1 Retire el cartucho FINE de color del contenedor.
2 Retire la cinta protectora.

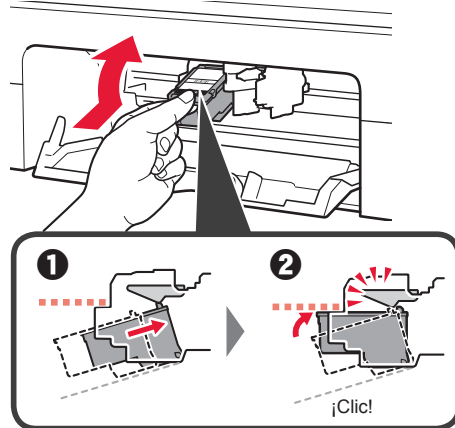


No tocar.

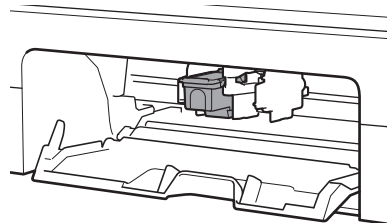
Tenga cuidado con la tinta de la cinta protectora.

- 3 1 Inserte el cartucho FINE de color en el soporte del cartucho FINE en el lado izquierdo de forma ligeramente inclinada hacia arriba.
2 Presione el cartucho FINE hacia adentro y hacia arriba firmemente hasta que encaje en su posición.

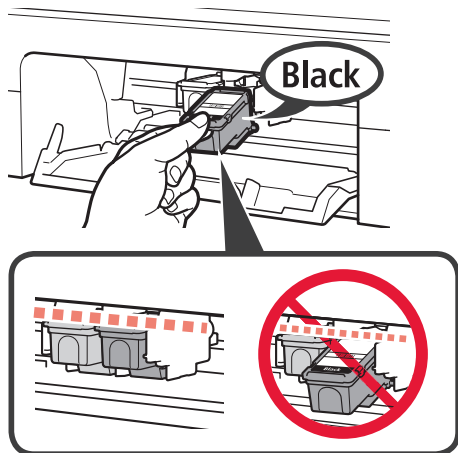
Confirme que el cartucho FINE está recto y nivelado.



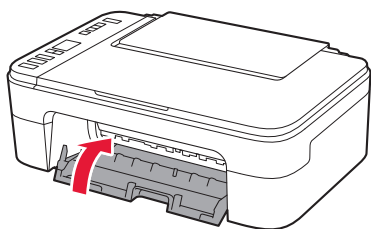
No golpear contra los objetos de alrededor.



- 4 Repita los pasos del 2 al 3 para instalar el cartucho FINE negro en el lado derecho.



- 5 Cierre la cubierta.

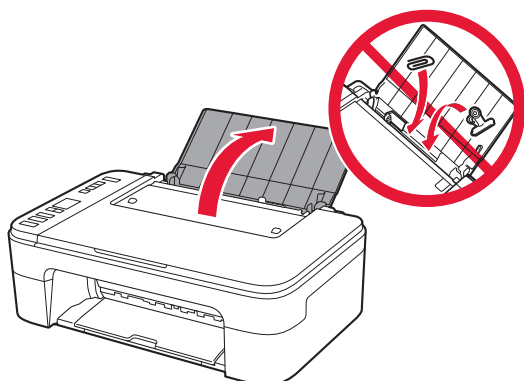


Si en la pantalla aparece **E > 0 > 4**, vuelva al paso 3 de "4. Instalar los cartuchos FINE" y confirme que los cartuchos FINE de color y negro están instalados correctamente.

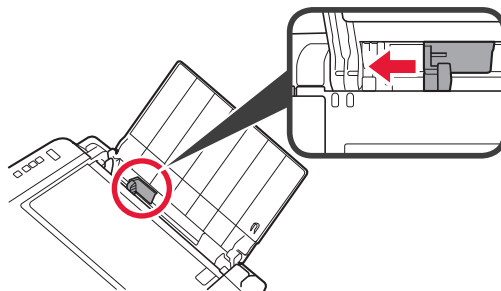
5. Carga del papel



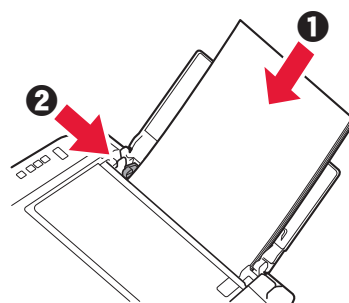
- 1 Abra el soporte del papel.



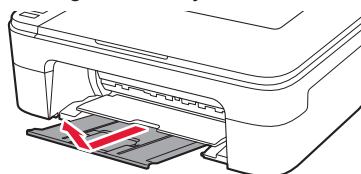
- 2 Deslice la guía del papel hacia la izquierda.



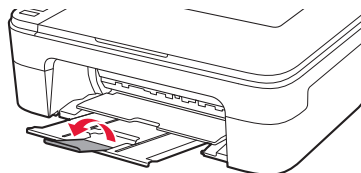
- 3
- 1 Cargue papel normal de tamaño Carta o A4 contra el borde derecho con el lado de impresión hacia arriba.
 - 2 Deslice la guía del papel para alinearla con el lado de la pila de papel.



- 4 Extraiga la bandeja de salida del papel.

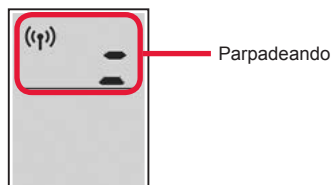


- 5 Abra la extensión de la bandeja de salida.



6. Preparación para la conexión

- 1 Confirme que en la pantalla se muestra lo siguiente.



¿Qué dispositivo va a conectar?



Ordenador



Ordenador y
teléfono inteligente



Teléfono inteligente

Para usar la impresora sin conectar con ningún otro dispositivo. → "7-c"

7-a

Conectar al ordenador

Si utiliza varios ordenadores, realice estos pasos en cada ordenador.



- 1 Acceda al sitio web de Canon desde un ordenador.

<https://ij.start.canon>



- 2 Seleccione  **Configurar**.

- 3 Escriba el nombre del modelo de su impresora y haga clic en **Ir**.

- 4 Haga clic en **Iniciar**.

- 5 Haga clic en **Si ya ha preparado la impresora, vaya a Conectar**.

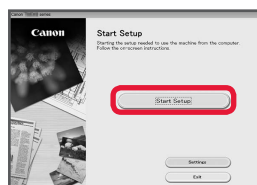
»»» Nota

Los siguientes pasos son para usuarios de Windows (excepto Windows 10 in S mode) y macOS. Para otros sistemas operativos, continúe con la configuración siguiendo las instrucciones en pantalla.

- 6 Haga clic en **Descargar**.

- 7 Ejecute el archivo descargado.

- 8 Haga clic en **Iniciar configuración (Start Setup)**.



- 9 Siga las instrucciones que aparezcan en pantalla.

- Estas operaciones pueden llevar algún tiempo.
- Para conectar con un teléfono inteligente también, consulte "7-b. Conexión con un teléfono inteligente" en la página 5.

Uso del CD-ROM de instalación para Windows

Haga doble clic en **EasySetup.exe** en el CD-ROM y después continúe desde el paso 3. Si no tiene una conexión a Internet, abra la carpeta **win** en el CD-ROM y haga doble clic en **SETUP.exe**. Esto instalará el controlador de la impresora.

7-b

Conexión con un teléfono inteligente

Si utiliza varios teléfonos inteligentes, realice estos pasos en cada teléfono inteligente.



Prepare lo siguiente antes de empezar.

- 1 Active la configuración de Wi-Fi en su teléfono inteligente.
- 2 Conecte su teléfono inteligente al router inalámbrico (si tiene un router inalámbrico).
Consulte los manuales de su teléfono inteligente y del router inalámbrico para obtener más detalles.

- 1 Instale la aplicación "Canon PRINT Inkjet/SELPHY" en su teléfono inteligente.

- Escanee el código QR que se muestra a la derecha para acceder al sitio web de Canon y, a continuación, descargue la aplicación.



- 2 Abra la configuración de Wi-Fi de su teléfono inteligente. Toque el nombre de red (SSID) que empieza con "Canon_ij_". Si no aparece "Canon_ij_", vaya al paso 3.

(Ejemplo de la pantalla de iOS)



- 3 Abra la aplicación instalada.



- 4 Siga las instrucciones en pantalla de la aplicación para agregar su impresora.

Cuando haya agregado la impresora, podrá imprimir desde su teléfono inteligente. Para imprimir fotos, consulte "Carga de papel fotográfico" en la página 6.

7-c

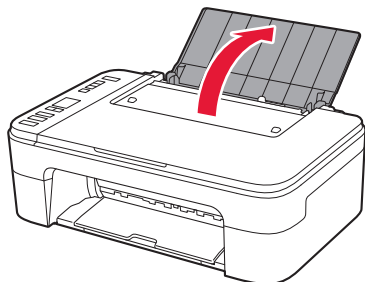
Ningún dispositivo conectado

- 1 Pulse el botón **Parar (Stop)**.
- 2 Confirme que en la pantalla se muestra lo siguiente.

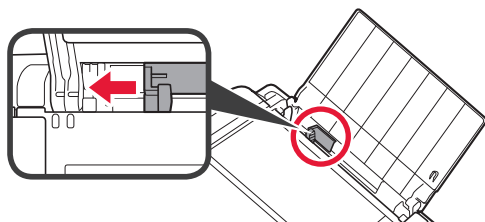


Carga de papel fotográfico

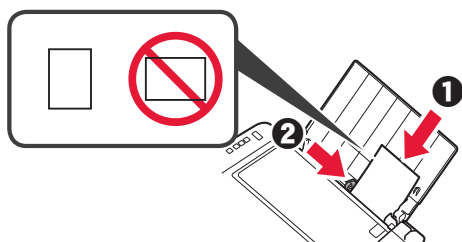
- 1 Abra el soporte del papel.



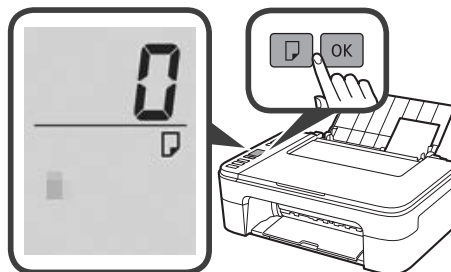
- 2 Deslice la guía del papel hacia la izquierda.



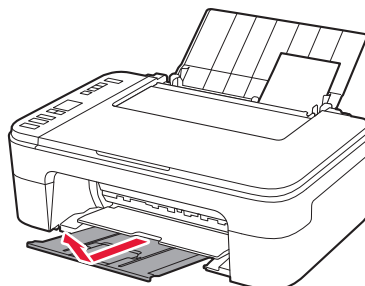
- 3
- 1 Cargue varias hojas de papel fotográfico contra el borde derecho con el lado de impresión hacia arriba.
 - 2 Deslice la guía del papel para alinearla con el lado de la pila de papel.



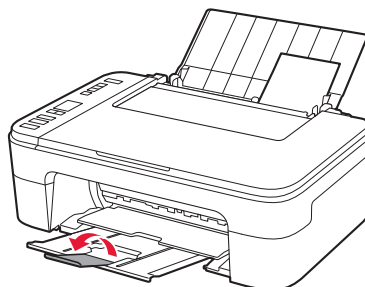
- 4 Pulse el botón **Selección de papel (Paper Select)**, seleccione un tamaño de papel y, a continuación, pulse el botón **OK**.



- 5 Extraiga la bandeja de salida del papel.



- 6 Abra la extensión de la bandeja de salida.



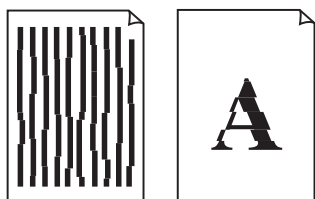
Si los resultados de impresión no son satisfactorios

Realice Alineación de los cabezales de impresión (Print Head Alignment) si las líneas rectas aparecen torcidas o los colores no son uniformes, o si los resultados de impresión no son como se esperaba.

Para más información, haga clic en **Mantenimiento** en el **Manual en línea** y consulte **Si la impresión pierde intensidad o es irregular > Alineación del Cabezal de impresión**.

Consulte en la cubierta trasera de este manual cómo se abre el **Manual en línea**.

■ Líneas desalineadas



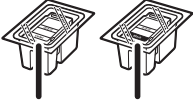
■ Colores desiguales o con manchas





1. Έλεγχος των στοιχείων που περιλαμβάνονται

● Φυσίγγια FINE



Έγχρωμο Μαύρο

● Καλώδιο τροφοδοσίας

● CD-ROM εγκατάστασης για Windows

● Πληροφορίες για την ασφάλεια και σημαντικές πληροφορίες

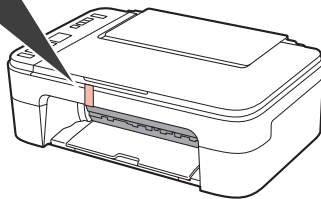
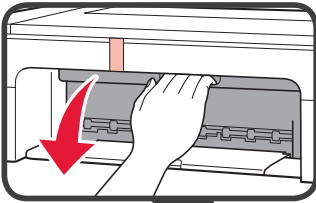
● Ξεκινώντας (αυτό το εγχειρίδιο)

2. Αφαίρεση υλικών συσκευασίας

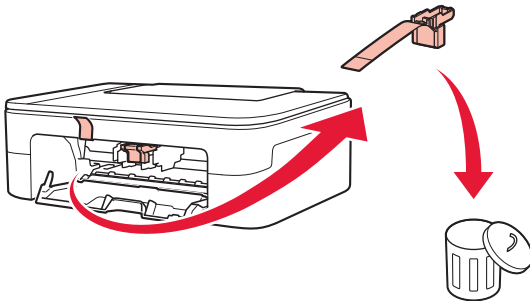


1 Αφαιρέστε και απορρίψτε τυχόν υλικά συσκευασίας και την πορτοκαλί ταινία από το εξωτερικό του εκτυπωτή.

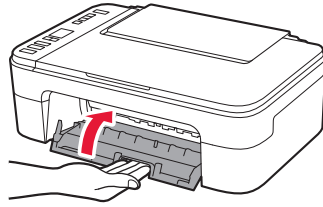
2 Ανοίξτε το κάλυμμα.



3 Αφαιρέστε και απορρίψτε την πορτοκαλί ταινία και το προστατευτικό υλικό από το εσωτερικό.



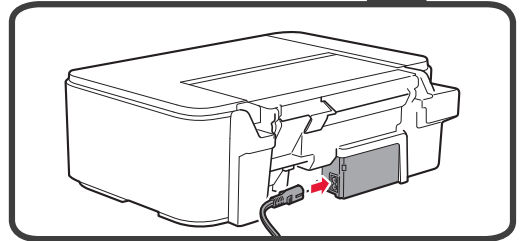
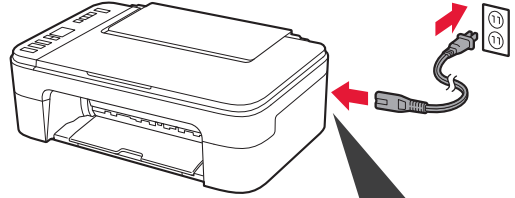
4 Κλείστε το κάλυμμα.



3. Ενεργοποίηση του εκτυπωτή

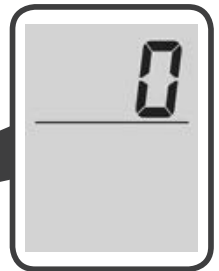
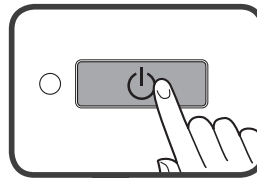


1 Συνδέστε το καλώδιο τροφοδοσίας.



Προς το παρόν, μη συνδέσετε άλλα καλώδια.

2 Πατήστε το κουμπί ON.

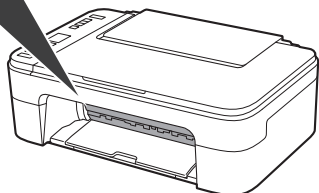
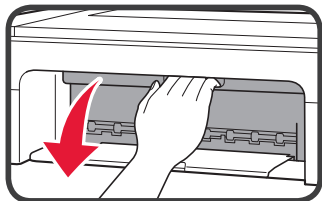


Εάν εμφανιστεί στην οθόνη η ένδειξη **E > 0 > 9**, πιάστε το κουμπί **ON** για να απενεργοποιήσετε τον εκτυπωτή και, στη συνέχεια, επαναλάβετε τις ενέργειες από το βήμα 2 από «2. Αφαίρεση υλικών συσκευασίας».

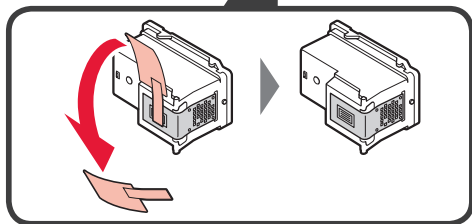
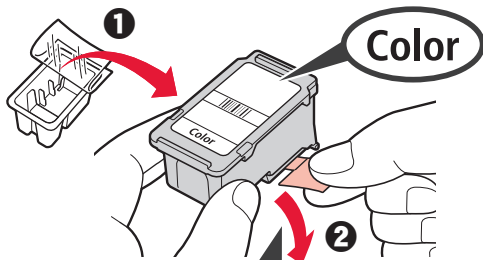
4. Τοποθέτηση των φυσιγγίων FINE



1 Ανοίξτε το κάλυμμα.



- 2
- 1 Αφαιρέστε το έγχρωμο φυσιγγίο FINE από τη συσκευασία.
 - 2 Αφαιρέστε την προστατευτική ταινία.

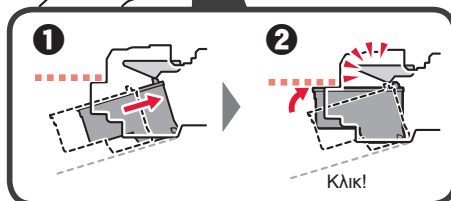
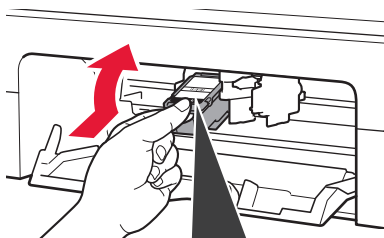


Μην αγγίζετε.

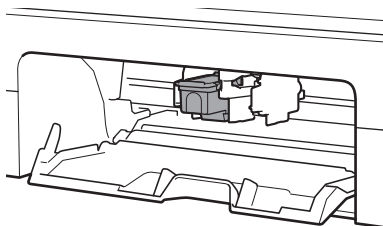
Προσέχετε τη μελάνη που παραμένει στην προστατευτική ταινία.

- 3
- 1 Τοποθετήστε το έγχρωμο φυσιγγίο FINE στη θήκη φυσιγγίου FINE στην αριστερή πλευρά με ελαφρώς ανοδική κλίση.
 - 2 Πιέστε το φυσιγγίο FINE προς τα μέσα και επάνω μέχρι να κουμπώσει με ασφάλεια στη θέση του.

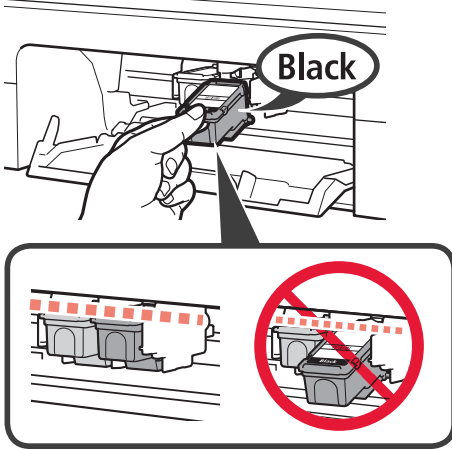
Επιβεβαιώστε ότι το φυσιγγίο FINE είναι ίσιο και επίπεδο.



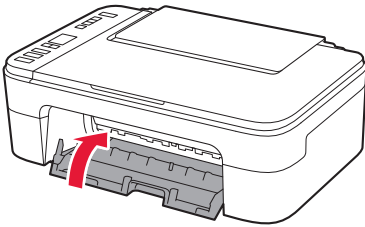
Μην το χτυπάτε στα περιβάλλοντα μέρη.



- 4 Επαναλάβετε τα βήματα 2 έως 3 για να εγκαταστήσετε το μαύρο φυσιγγίο FINE στη δεξιά πλευρά.



- 5 Κλείστε το κάλυμμα.

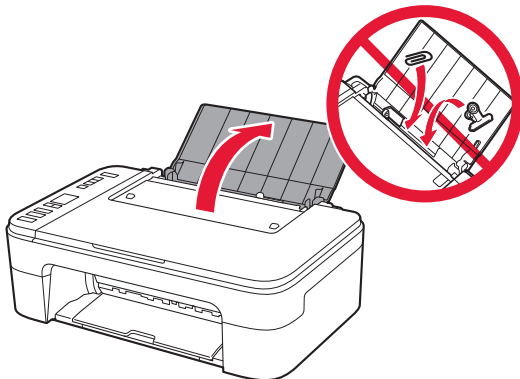


Εάν εμφανιστεί στην οθόνη η ένδειξη **E > 0 > 4**, επιστρέψτε στο βήμα 3 από «4. Τοποθέτηση των φυσιγγίων FINE» και βεβαιωθείτε ότι έχουν τοποθετηθεί σωστά το έγχρωμο και το μαύρο φυσιγγίο FINE.

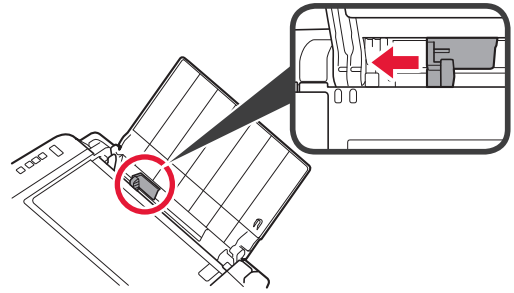
5. Τοποθέτηση χαρτιού



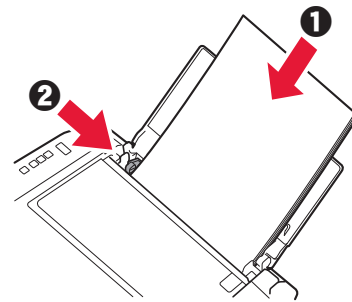
- 1 Ανοίξτε την υποστήριξη χαρτιού.



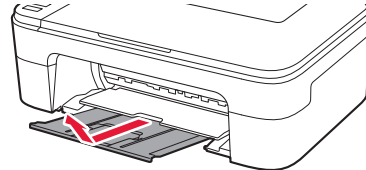
- 2 Σύρετε τον οδηγό χαρτιού προς τα αριστερά.



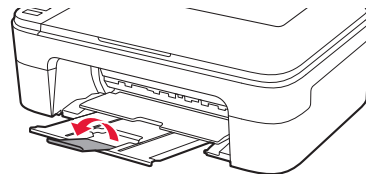
- 3 **1** Τοποθετήστε απλό χαρτί μεγέθους Letter ή A4 έτσι ώστε να ακουμπά στη δεξιά πλευρά και με την πλευρά εκτύπωσης στραμμένη προς τα επάνω.
2 Σύρετε τον οδηγό χαρτιού για να τον ευθυγραμμίσετε με την πλαινή πλευρά της στοίβας των χαρτιών.



- 4 Τραβήξτε έξω τη θήκη εξόδου χαρτιού.

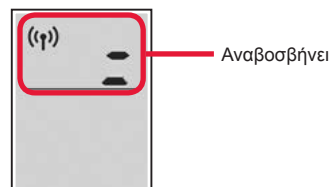


- 5 Ανοίξτε την προέκταση θήκης εξόδου.



6. Προετοιμασία για σύνδεση

- 1 Βεβαιωθείτε ότι εμφανίζεται η παρακάτω οθόνη.



Τι συσκευή σκοπεύετε να συνδέσετε;



Υπολογιστής



Υπολογιστής και
smartphone



Smartphone

Για να χρησιμοποιήσετε τον εκτυπωτή χωρίς να συνδέσετε άλλες συσκευές.
→ «7-C»

7-a

Σύνδεση με υπολογιστή

Εάν χρησιμοποιείτε πολλούς υπολογιστές, εκτελέστε αυτά τα βήματα σε κάθε υπολογιστή.



- 1 Μεταβείτε στη διαδικτυακή τοποθεσία της Canon από έναν υπολογιστή.

<https://ij.start.canon>



- 2 Επιλέξτε  **Εγκατάσταση**.

- 3 Καταχωρίστε το όνομα μοντέλου του εκτυπωτή σας και κάντε κλικ στην επιλογή **Μετάβαση**.

- 4 Κάντε κλικ στο **Έναρξη**.

- 5 Κάντε κλικ στο **Αν έχετε ήδη προετοιμάσει τον εκτυπωτή σας, μεταβείτε στη Σύνδεση**.

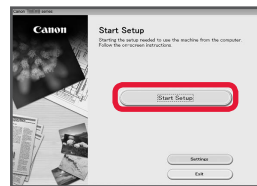
»»» Σημείωση

Τα παρακάτω βήματα αφορούν τους χρήστες Windows (εκτός από Windows 10 in S mode) και macOS. Στην περίπτωση άλλου λειτουργικού συστήματος, συνεχίστε τη ρύθμιση ακολουθώντας τις οδηγίες που εμφανίζονται στην οθόνη.

- 6 Κάντε κλικ στο **Λήψη**.

- 7 Εκτελέστε το ληφθέν αρχείο.

- 8 Κάντε κλικ στο **Εκκίνηση ρύθμισης (Start Setup)**.



- 9 Ακολουθήστε τις οδηγίες στην οθόνη.

- Αυτές οι λειτουργίες ενδέχεται να χρειαστούν κάποιο χρόνο.
- Για να συνδέσετε και σε smartphone, ανατρέξτε στην ενότητα «7-b. Σύνδεση με Smartphone» στη σελίδα 5.

Χρήση του CD-ROM εγκατάστασης για Windows

Κάντε διπλό κλικ στο αρχείο **EasySetup.exe** που υπάρχει στο CD-ROM και, έπειτα, συνεχίστε από το βήμα 3. Αν δεν έχετε σύνδεση internet, ανοίξτε το φάκελο **win** στο CD-ROM και κάντε διπλό κλικ στο αρχείο **SETUP.exe**. Αυτή η ενέργεια θα εγκαταστήσει το πρόγραμμα οδήγησης του εκτυπωτή.

7-b

Σύνδεση με Smartphone

Εάν χρησιμοποιείτε πολλά smartphone, εκτελέστε αυτά τα βήματα σε κάθε smartphone.



Προετοιμάστε τα εξής προτού ξεκινήσετε.

- 1 Ενεργοποιήστε τη ρύθμιση Wi-Fi στο smartphone σας.
- 2 Συνδέστε το smartphone σας στον ασύρματο δρομολογητή (εάν έχετε ασύρματο δρομολογητή). Για περισσότερες λεπτομέρειες, ανατρέξτε στα εγχειρίδια του smartphone και του ασύρματου δρομολογητή.

- 1 Εγκαταστήστε την εφαρμογή «Canon PRINT Inkjet/SELPHY» στο smartphone σας.

- Για πρόσβαση στην τοποθεσία web της Canon, σαρώστε τον κωδικό QR που εμφανίζεται στα δεξιά και, έπειτα, πραγματοποιήστε λήψη της εφαρμογής.



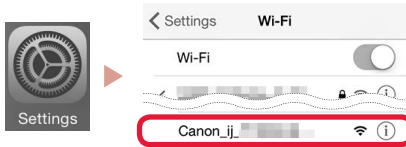
- 3 Ανοίξτε την εγκατεστημένη εφαρμογή.



- 4 Ακολουθήστε τις οδηγίες που εμφανίζονται στην οθόνη της εφαρμογής για να προσθέσετε τον εκτυπωτή σας.

- 2 Ανοίξτε τις ρυθμίσεις Wi-Fi του smartphone σας. Πατήστε το όνομα δικτύου (SSID) που ξεκινά με «Canon_ij_».
- Αν το όνομα «Canon_ij_» δεν εμφανίζεται, συνεχίστε στο βήμα 3.

(Παράδειγμα της οθόνης iOS)



Αφού προσθέσετε τον εκτυπωτή σας, θα μπορείτε να εκτυπώνετε από το smartphone σας. Για να εκτυπώσετε φωτογραφίες, ανατρέξτε στην ενότητα «Τοποθέτηση φωτογραφικού χαρτιού» στη σελίδα 6.

7-c

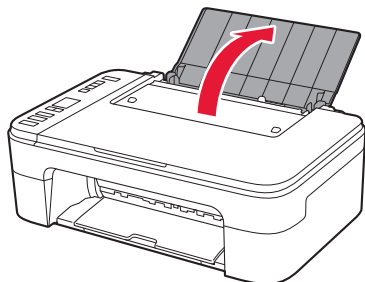
Δεν έχει συνδεθεί κάποια συσκευή

- 1 Πατήστε το κουμπί **Στοπ (Stop)**.
- 2 Βεβαιωθείτε ότι εμφανίζεται η παρακάτω οθόνη.

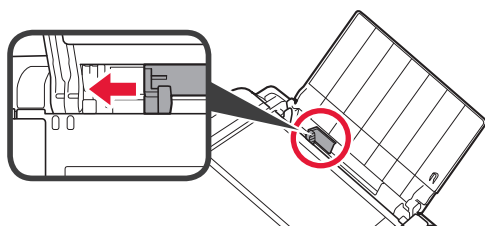


Τοποθέτηση φωτογραφικού χαρτιού

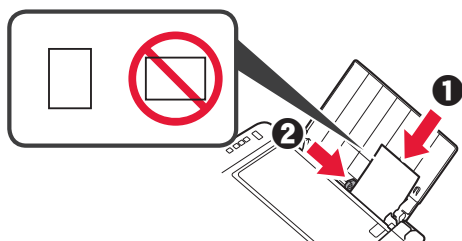
- 1 Ανοίξτε την υποστήριξη χαρτιού.



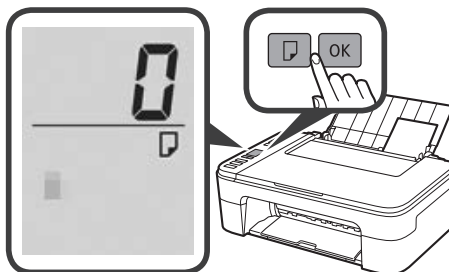
- 2 Σύρετε τον οδηγό χαρτιού προς τα αριστερά.



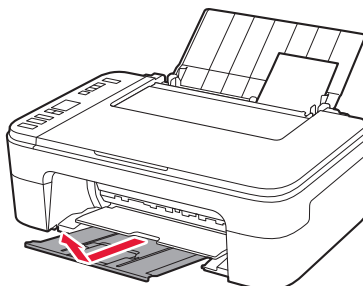
- 3 ❶ Τοποθετήστε πολλά φύλλα φωτογραφικού χαρτιού έτσι ώστε να ακουμπούν στη δεξιά πλευρά και με την πλευρά εκτύπωσης στραμμένη προς τα επάνω.
❷ Σύρετε τον οδηγό χαρτιού για να τον ευθυγραμμίσετε με την πλαϊνή πλευρά της στοίβας των χαρτιών.



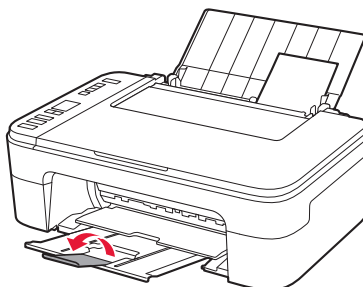
- 4 Πατήστε το κουμπί **Επιλογή χαρτιού (Paper Select)**, επιλέξτε μέγεθος χαρτιού και, στη συνέχεια, πατήστε το κουμπί **OK**.



- 5 Τραβήξτε έξω τη θήκη εξόδου χαρτιού.



- 6 Ανοίξτε την προέκταση θήκης εξόδου.



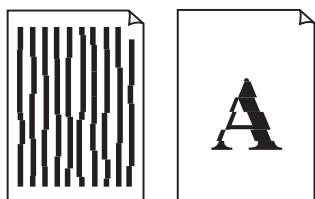
Εάν τα αποτελέσματα εκτύπωσης δεν είναι ικανοποιητικά

Εκτελέστε Ευθυγράμμιση κεφαλής εκτύπωσης (Print Head Alignment) εάν οι ευθείες γραμμές είναι στραβές ή τα χρώματα δεν είναι συνεπή ή εάν τα αποτελέσματα της εκτύπωσης δεν είναι αυτά που αναμένετε.

Για λεπτομέρειες, κάντε κλικ στην επιλογή **Συντήρηση** στο **Εγχειρίδιο Online** και ανατρέξτε στην ενότητα **Εάν η εκτύπωση είναι αχνή ή ανομοιόμορφη > Ευθυγράμμιση της Κεφαλής εκτύπωσης**.

Ανατρέξτε στο πίσω εξώφυλλο του παρόντος εγχειριδίου για να δείτε πώς θα ανοίξετε το **Εγχειρίδιο Online**.

- Κακή ευθυγράμμιση των γραμμών



- Ανομοιογενή χρώματα ή χρώματα με ραβδώσεις



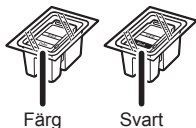
Onlineinstallation

<https://ij.start.canon>



1. Kontrollera medföljande objekt

- FINE-kassetter
- Strömkabel
- Installations-CD för Windows
- Information om säkerhet och annan viktig information
- Uppstartsguide (denna handbok)



Färg

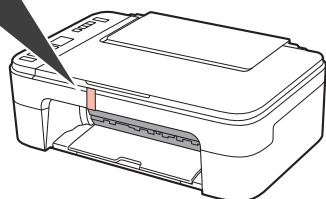
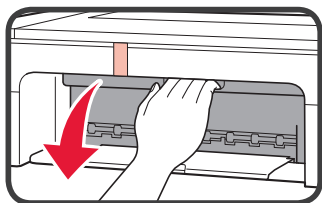
Svart

2. Ta bort förpackningsmaterial

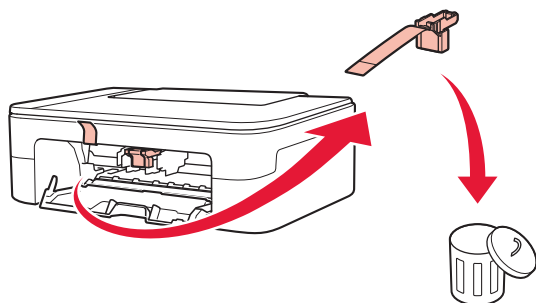


1 Ta bort och kassera eventuellt förpackningsmaterial och orange tejp från skrivarens utsida.

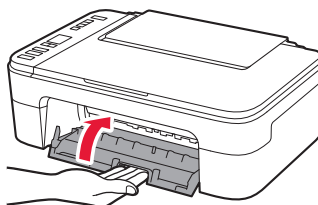
2 Öppna luckan.



3 Ta bort och kassera den orange tejp och skyddsmaterialet inuti.



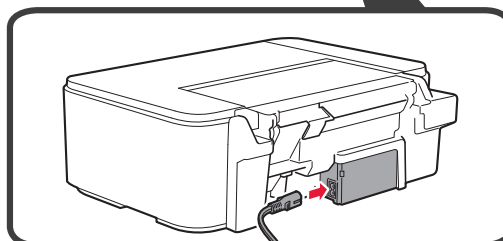
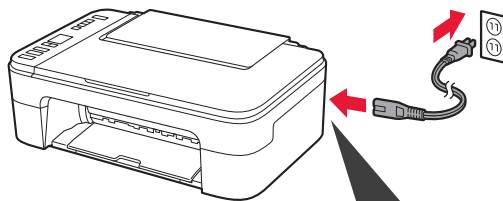
4 Stäng luckan.



3. Slå på skrivaren

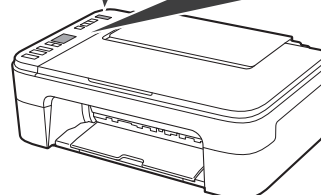
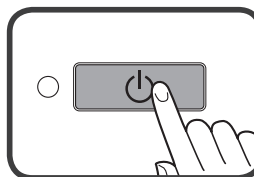


1 Anslut strömkabeln.



Anslut inga andra kablar än strömkabeln ännu.

2 Tryck på PÅ (ON).

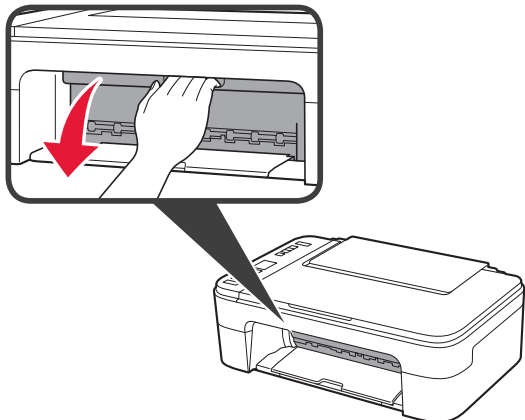


Om E > 0 > 9 visas på skärmen trycker du på knappen PÅ (ON) för att stänga av skrivaren och börjar sedan om från steg 2 i "2. Ta bort förpackningsmaterial".

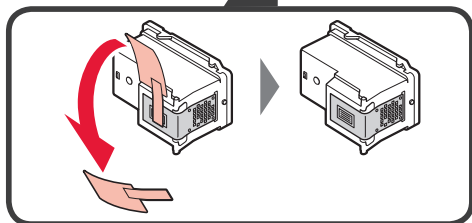
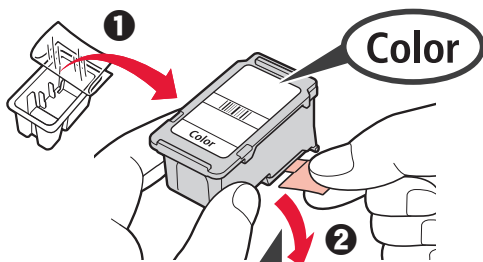
4. Installera FINE-kassetterna



1 Öppna luckan.



2 1 Ta bort FINE-kassetten för färg ur behållaren.
2 Ta bort skyddstejpen.

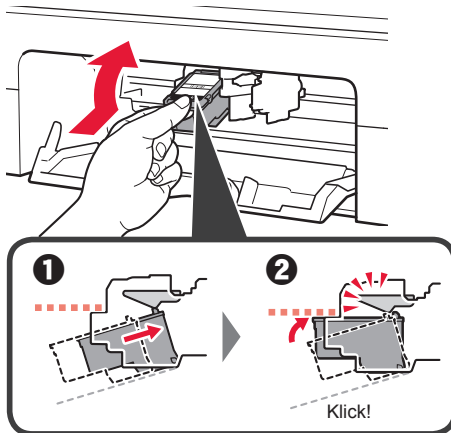


Vidrör inte denna.

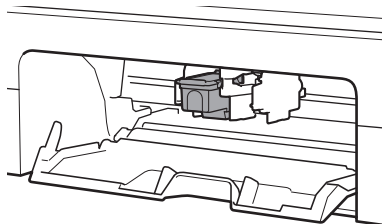
Det kan finnas bläck på skyddstejpen så var försiktig.

3 1 För in FINE-kassetten för färg i hållaren för FINE-kassett på vänster sida i en något uppåtgående vinkel.
2 Tryck FINE-kassetten inåt och uppåt tills den klickar på plats.

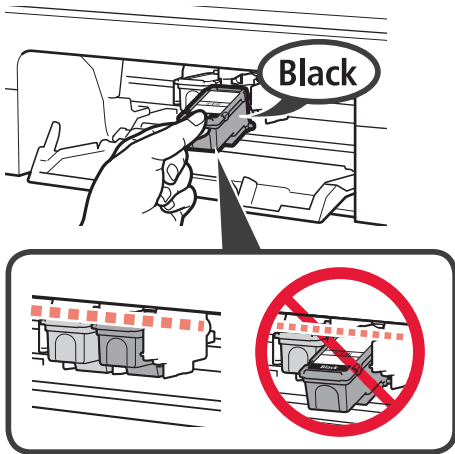
Bekräfta att FINE-kassetten rak och horisontell.



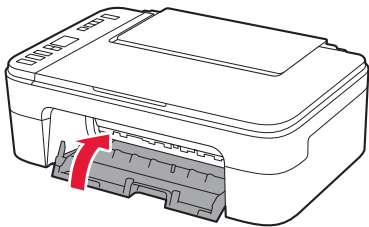
Låt den inte stöta i omgivande delar.



- 4 Upprepa steg 2 till 3 för att installera den svarta FINE-kassetten på höger sida.



- 5 Stäng luckan.

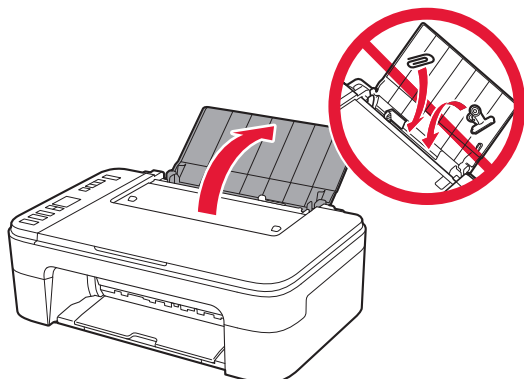


Om E > 0 > 4 visas på skärmen går du tillbaka till steg 3 i "4. Installera FINE-kassetterna" och kontrollerar att FINE-kassetterna för färg och svart har installerats korrekt.

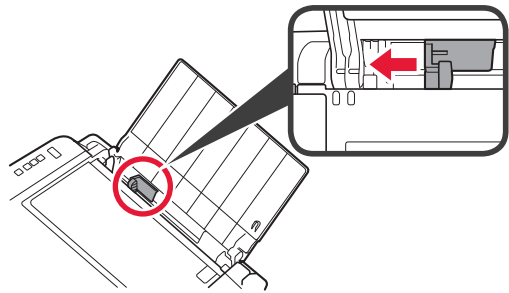
5. Fylla på papper



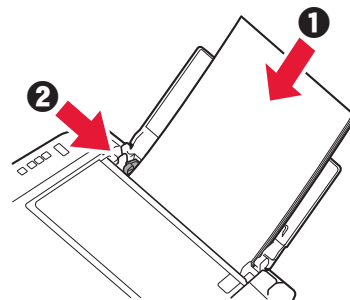
- 1 Öppna pappersstödet.



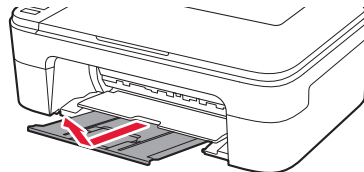
- 2 Skjut pappersledaren åt vänster.



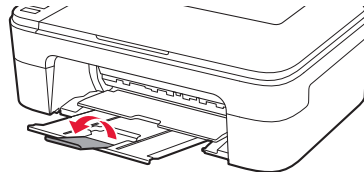
- 3
- 1 Lägga i vanligt Letter- eller A4-papper mot höger kant med utskriftssidan vänd uppåt.
 - 2 Skjut pappersledaren för att justera den efter pappersbuntens sida.



- 4 Dra ut utmatningsfacket.

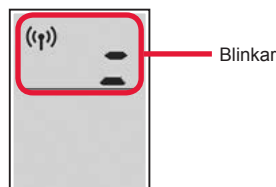


- 5 Öppna utmatningsfackets förlängningsdel.



6. Förbereda för anslutning

- 1 Kontrollera att skärmen visas som nedan.



Vilken enhet ansluter du?



Dator



Dator och
smarttelefon



Smarttelefon

Om du vill använda skrivaren utan att ansluta några andra enheter. → "7-c"

7-a

Ansluta till dator

Om du använder flera datorer utför du dessa steg på varje dator.



- 1 Gå till Canons webbplats på en dator.

<https://ij.start.canon>



- 2 Välj  **Konfigurera**.

- 3 Mata in skrivarens modellnamn och klicka på **Kör**.

- 4 Klicka på **Starta**.

- 5 Klicka på **Om du redan har förberett skrivaren går du till Anslut**.

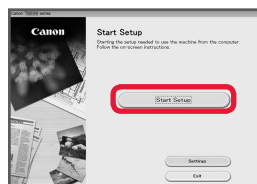
►►► **Obs!**

Följande steg gäller för användare med Windows (utom Windows 10 in S mode) eller macOS. För andra operativsystem fortsätter du följa anvisningarna på skärmen istället.

- 6 Klicka på **Hämta**.

- 7 Starta den hämtade filen.

- 8 Klicka på **Starta inställningar (Start Setup)**.



- 9 Följ instruktionerna på skärmen.

- Dessa åtgärder kan ta en stund.
- Om du också vill ansluta till en smarttelefon, läs "7-b. Ansluta till en smarttelefon" på sida 5.

Använda installations-CD:n för Windows

Dubbeltklicka på **EasySetup.exe** på CD:n och fortsätt sedan från steg 3. Om du inte har någon internetanslutning öppnar du **win**-mappen på CD:n och dubbeltklickar på **SETUP.exe**. Då installeras skrivardrivrutinen.

7-b

Ansluta till en smarttelefon

Om du använder flera smarttelefoner utför du dessa steg på varje smarttelefon.



Förbered följande innan du börjar.

- 1 Aktivera inställningen Wi-Fi på smarttelefonen.
- 2 Anslut smarttelefonen till den trådlösa routern (om du har en trådlös router).
Läs smarttelefonens och den trådlösa routerns handböcker för mer detaljer.

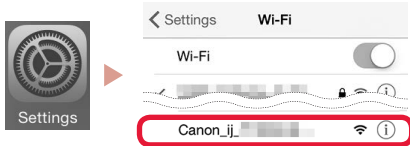
- 1 Installera appen "Canon PRINT Inkjet/SELPHY" på smarttelefonen.

- Skanna QR-koden till höger för att komma till Canons webbplats och hämta sedan appen.



- 2 Öppna Wi-Fi-inställningarna på smarttelefonen. Tryck på nätverksnamnet (SSID) som börjar med "Canon_ij_". Om "Canon_ij_" inte visas går du vidare till steg 3.

(Exempel på iOS-skärm)



- 3 Öppna den installerade appen.



- 4 Följ instruktionerna på skärmen i appen för att lägga till skrivaren.

När du har lagt till skrivaren kan du skriva ut från din smarttelefon.
Om du vill skriva ut foton, läs "Fylla på fotopapper" på sida 6.

7-c

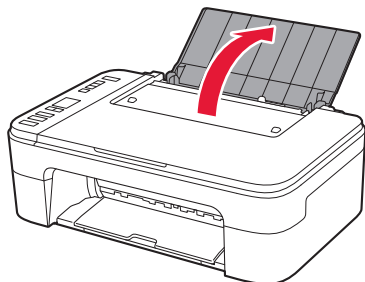
Ingen enhet är ansluten

- 1 Tryck på knappen **Stopp (Stop)**.
- 2 Kontrollera att skärmen visas som nedan.

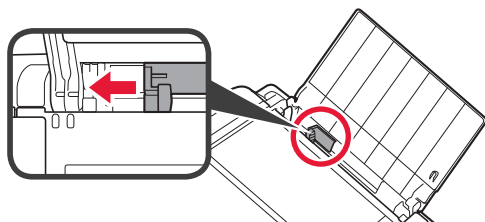


Fylla på fotopapper

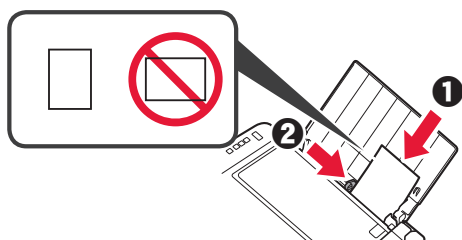
- 1 Öppna pappersstödet.



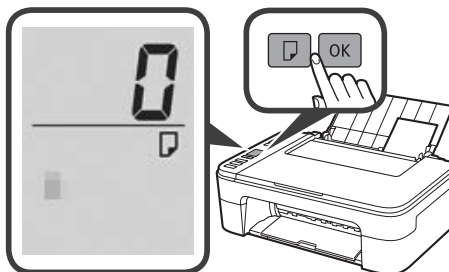
- 2 Skjut pappersledaren åt vänster.



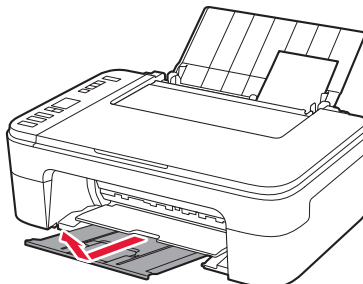
- 3 ❶ Lägga i flera ark med fotopapper mot höger kant med utskriftssidan vänd uppåt.
❷ Skjut pappersledaren för att justera den efter pappersbuntens sida.



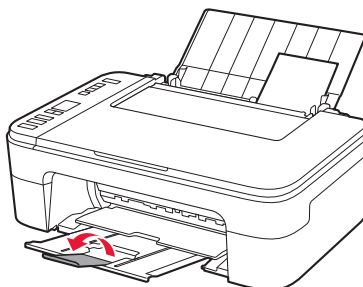
- 4 Tryck på knappen **Välj papper (Paper Select)**, välj en pappersstorlek och tryck sedan på knappen **OK**.



- 5 Dra ut utmatningsfacket.



- 6 Öppna utmatningsfackets förlängningsdel.



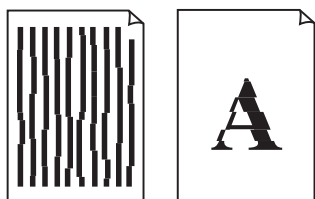
Om utskriftsresultatet inte är tillfredsställande

Utför Justering av skrivhuvud (Print Head Alignment) om raka linjer är ojämna eller om färger är flammiga, eller om utskriftsresultaten på något annat vis inte blir som förväntat.

Klicka på **Underhåll** på **Onlinehandbok** och läs **Om utskriften är svag eller ojämn > Justera Skrivhuvud**.

Se baksidan av den här handboken för information om att öppna **Onlinehandbok**.

- Linjer är feljusterade



- Ojämna färger eller färger med streck



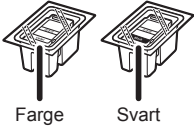
Tilkoblet oppsett

<https://ij.start.canon>



1. Kontroller medfølgende komponenter

● FINE-kassetter



Farge

Svart

● Strømledning

● Installerings-CD-ROM for Windows

● Sikkerhetsinformasjon og viktig informasjon

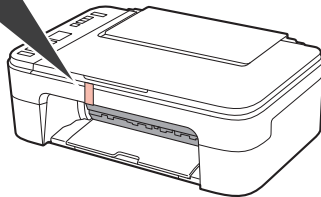
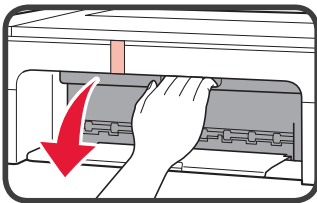
● Komme i gang (denne manualen)

2. Fjerne beskyttelsesmateriale

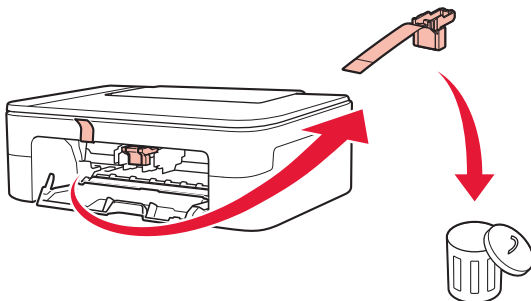


1 Fjern og kast eventuelt beskyttelsesmateriale og oransje tape fra utsiden av skriveren.

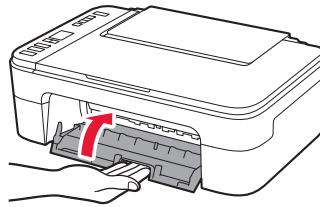
2 Åpne dekelet.



3 Fjern og kast den oransje tapen og beskyttelsesmaterialelet inni.



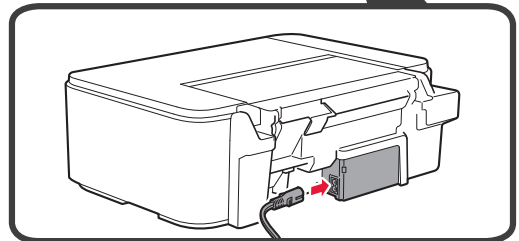
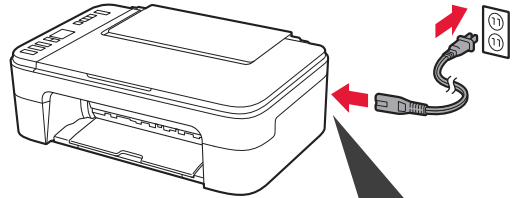
4 Lukk dekelet.



3. Slå på skriveren

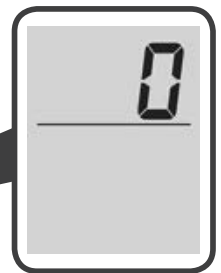
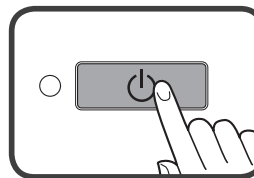


1 Koble til strømledningen.



Ikke koble til andre kabler på dette tidspunktet.

2 Trykk på **PÅ (ON)**-knappen.

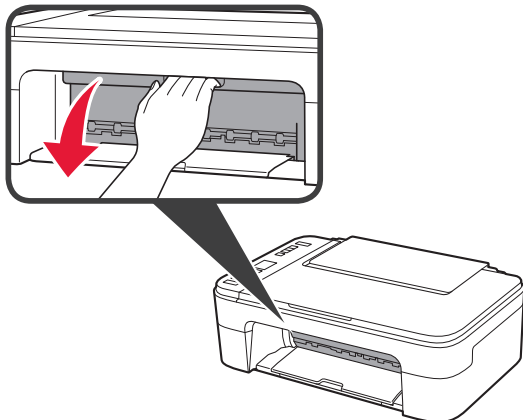


Hvis **E > 0 > 9** vises på skjermen, trykker du på **PÅ (ON)**-knappen for å slå av skriveren og gjentar prosessen fra trinn 2 av "2. Fjerne beskyttelsesmateriale".

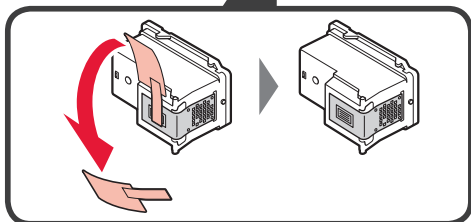
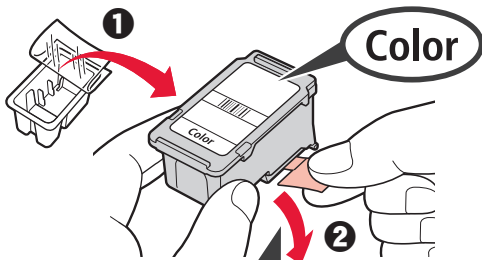
4. Installere FINE-kassetten



1 Åpne dekselet.



- 1 Fjern FINE-kassetten med farge ut av beholderen.
- 2 Fjern beskyttelsestapen.

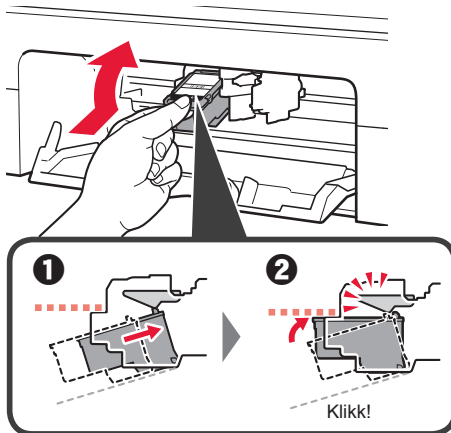


Ikke rør.

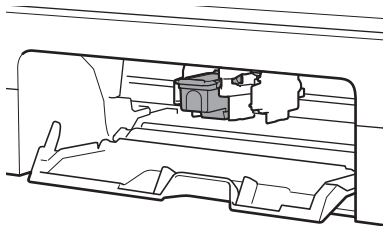
Vær oppmerksom på at det kan være blekk på tapen.

- 3 1 Hold FINE-kassetten for farge skrått oppover for å sette den inn i FINE-kassettholderen på venstre side.
- 2 Dytt FINE-kassetten inn og opp med fast trykk til den klikker på plass.

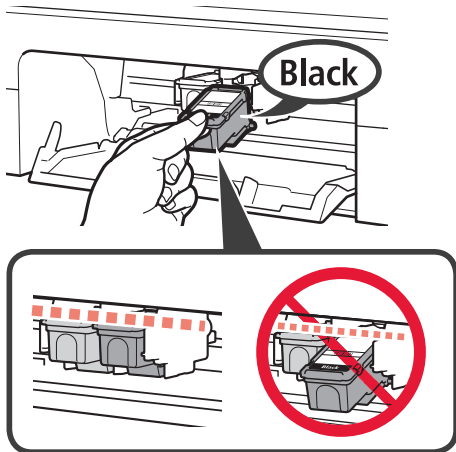
Bekreft at FINE-kassetten står rett og plant.



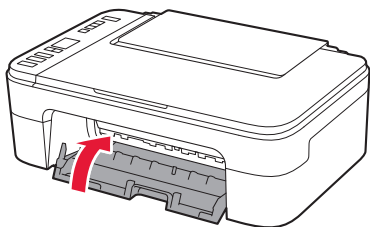
Ikke dunk den mot de omkringliggende delene.



- 4 Gjenta trinn 2 til 3 for å installere den svarte FINE-kassetten på høyre side.



- 5 Lukk dekkelet.

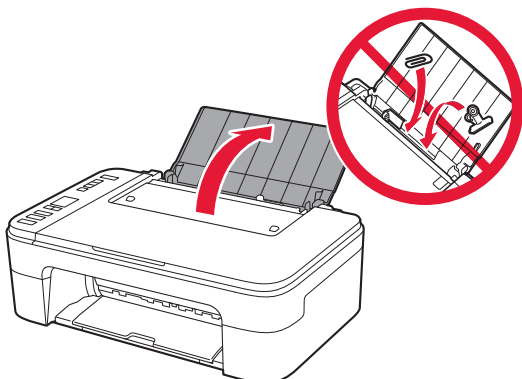


Hvis $E > 0 > 4$ vises på skjermen, går du tilbake til trinn 3 av "4. Installere FINE-kassetten" og bekrefter at farge og svarte FINE-kassetter er riktig installert.

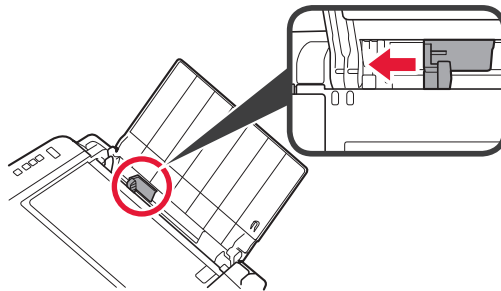
5. Legge i papir



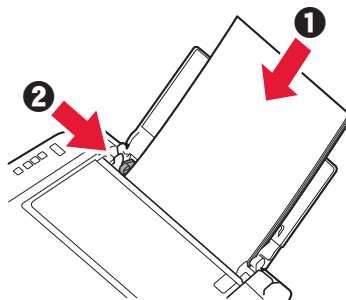
- 1 Åpne papirstøtten.



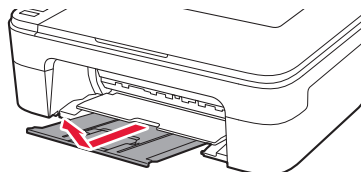
- 2 Dra papirføreren til venstre.



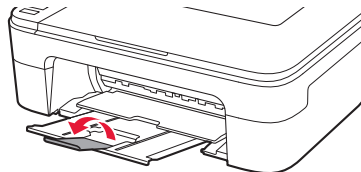
- 3
- 1 Legg inn vanlig papir i Letter- eller A4-størrelse inntil den høyre kanten med utskriftssiden opp.
 - 2 Skyv papirføreren slik at den ligger inntil siden på papirstabelen.



- 4 Trekk ut papirutmatingsbrettet.

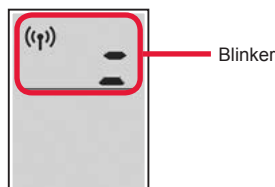


- 5 Åpne mottakerbrettforlengelsen.



6. Forberedelser for tilkobling

- 1 Bekreft at skjermbildet vises som nedenfor.



Hvilken enhet kobler du til?



Datamaskin



Datamaskin og smarttelefon



Smarttelefon

Bruke skriveren uten å koble den til andre enheter. → "7-c"

7-a

Koble til en datamaskin

Hvis du bruker flere datamaskiner, utfører du disse trinnene på hver datamaskin.



- 1 Åpne Canon-nettstedet fra en datamaskin.

<https://ij.start.canon>



- 2 Velg  **Oppsett**.

- 3 Angi skriverens modellnavn og klikk på **Gå**.

- 4 Klikk på **Start**.

- 5 Klikk på **Hvis du allerede har gjort klar skriveren, gå du til Koble til**.

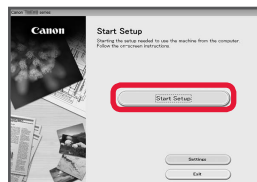
»»» Merk

Følgende trinn gjelder Windows- (bortsett fra Windows 10 in S mode) og macOS-brukere. Ved bruk av et annet operativsystem fortsetter du oppsettet ved i stedet å følge instruksjonene på skjermen.

- 6 Klikk på **Last ned**.

- 7 Kjør den nedlastede filen.

- 8 Klikk på **Start oppsett (Start Setup)**.



- 9 Følg instruksjonene på skjermen.

- Disse operasjonene kan ta litt tid.
- Se "7-b. Koble til en smarttelefon" på side 5 hvis du i tillegg vil koble til en smarttelefon.

Bruke installerings-CD-ROM for Windows

Dobbelklikk på **EasySetup.exe** på CD-en, og fortsett deretter fra trinn 3. Hvis du ikke har internettforbindelse, kan du åpne **win**-mappen på CD-en og dobbeltklikke på **SETUP.exe**. Dette installerer skriverdriveren.

7-b

Koble til en smarttelefon

Hvis du bruker flere smarttelefoner, utfører du disse trinnene på hver smarttelefon.



Klargjør følgende før du starter.

- 1 Aktiver Wi-Fi-innstillingen på smarttelefonen.
- 2 Koble smarttelefonen til den trådløse ruter (hvis du har en trådløs ruter).
Se manualene for smarttelefonen og den trådløse ruter for å få flere detaljer.

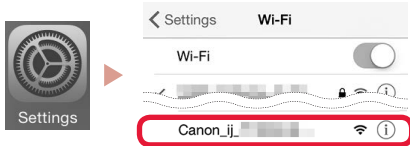
- 1 Installer "Canon PRINT Inkjet/SELPHY"-appen på smarttelefonen.

- Skann QR-koden til høyre for å få tilgang til Canon-nettstedet, og last deretter ned appen.



- 2 Åpne Wi-Fi-innstillingen på smarttelefonen. Trykk på nettverksnavnet (SSID) som begynner med "Canon_ij_". Hvis "Canon_ij_" ikke vises, fortsetter du til trinn 3.

(Eksempel på iOS skjermbilde)



- 3 Åpne den installerte appen.



- 4 Følg instruksjonene på skjermen i appen for å legge til skriveren.

Når du har lagt til skriveren din, kan du skrive ut fra smarttelefon.

Se "Legge i fotopapir" på side 6 for mer informasjon om hvordan du skriver ut bilder.

7-c

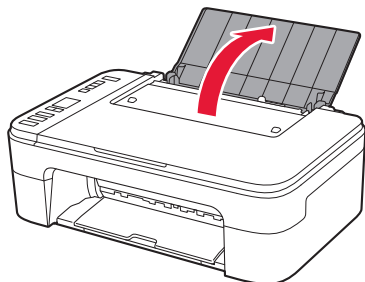
Ingen enhet tilkoplet

- 1 Trykk på **Stopp (Stop)**-knappen.
- 2 Bekreft at skjermbildet vises som nedenfor.

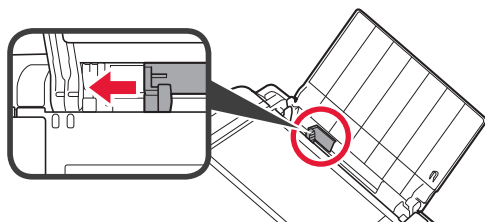


Legge i fotopapir

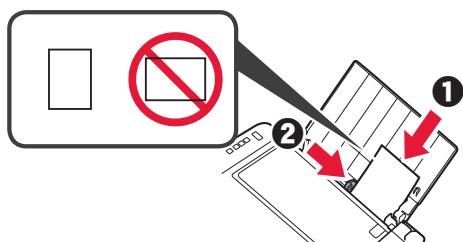
- 1 Åpne papirstøtten.



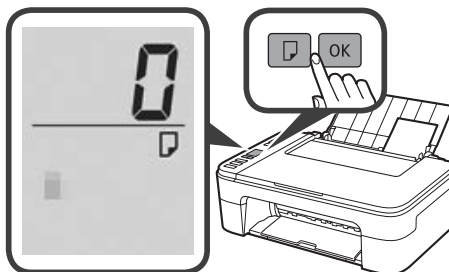
- 2 Dra papirføreren til venstre.



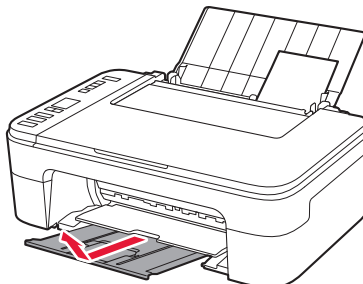
- 3
- 1 Legg i flere ark med fotopapir inntil den høyre kanten med utskriftssiden opp.
 - 2 Skyv papirføreren slik at den ligger inntil siden på papirstabelen.



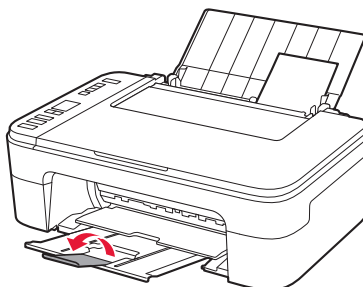
- 4 Trykk på **Velg papir (Paper Select)**-knappen, velg en papirstørrelse, og trykk deretter på **OK**-knappen.



- 5 Trekk ut papirutmatingsbrettet.



- 6 Åpne mottakerbrettforlengelsen.



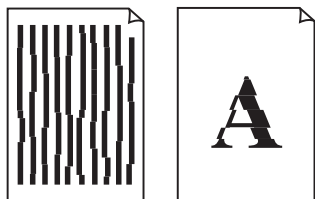
Hvis utskriftsresultatene ikke er tilfredsstillende

Utfør Justering av skrivehodet (Print Head Alignment) hvis rette linjer er bøyd, farger er ujevne eller utskriftsresultatene på annen måte ikke ble slik du forventet.

Hvis du vil ha mer detaljer, klikker du på **Vedlikehold** på **Nettbasert manual** og ser **Hvis utskriften er svak eller ujevn > Justere Skrivehodet**.

Se baksiden på denne manualen for informasjon om hvordan du åpner **Nettbasert manual**.

- Linjer er feiljusterte



- Ujevne eller stripete farger



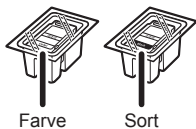
Online konfiguration

<https://ij.start.canon>



1. Kontrollér de medfølgende elementer

● FINE-patroner



Farve

Sort

● Netledning

● Installations-cd-rom til Windows

● Sikkerhedsoplysninger og vigtige oplysninger

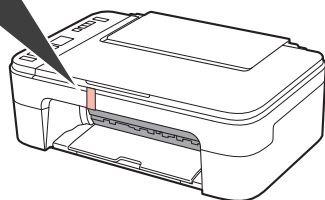
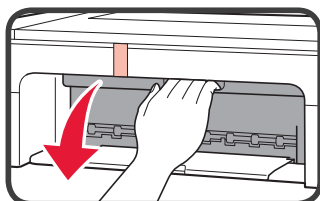
● Før du begynder (denne vejledning)

2. Fjern emballage

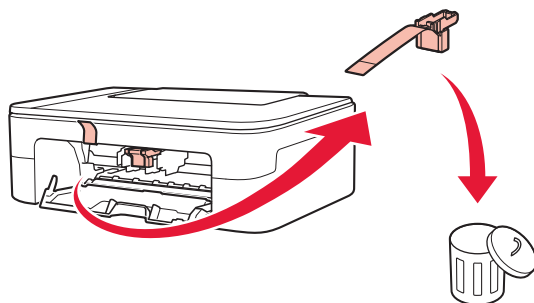


1 Fjern og bortskaf al emballage og orange tape fra printerens yderside.

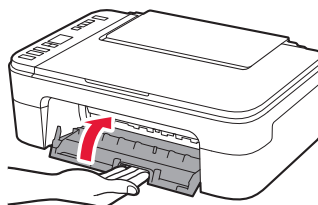
2 Åbn dækslet.



3 Fjern den orange tape og det beskyttende materiale inde i printeren, og smid det væk.



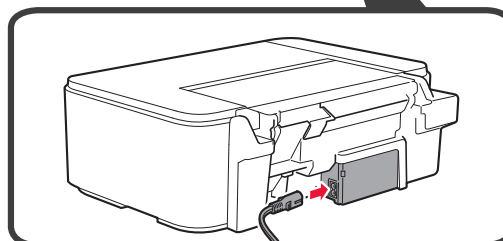
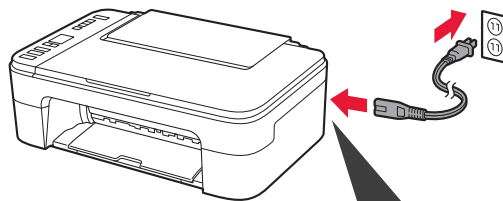
4 Luk dækslet.



3. Tænd printeren

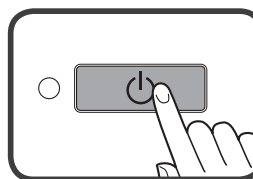


1 Tilslut netledningen.



På dette tidspunkt må du ikke tilslutte nogen andre kabler.

2 Tryk på knappen TIL (ON).

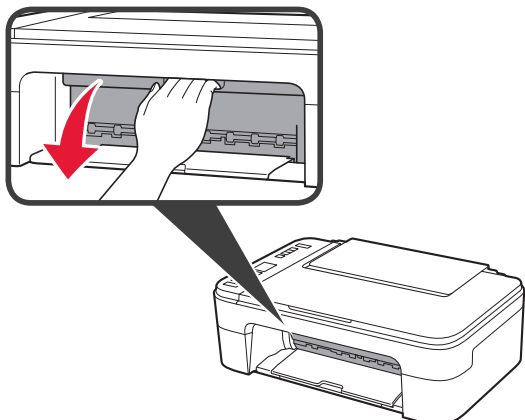


Hvis **E > 0 > 9** vises på skærmen, skal du trykke på knappen **TIL (ON)** for at slukke for printeren og derefter gentage fra trin 2 i "2. Fjern emballage".

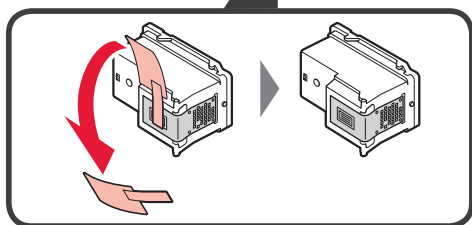
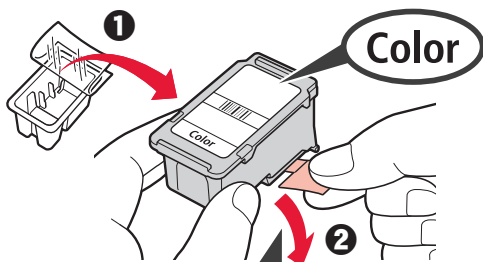
4. Installation af FINE-patroner



1 Åbn dækslet.



- 2
- 1 Tag farve-FINE-patronen ud af beholderen.
 - 2 Fjern den beskyttende tape.

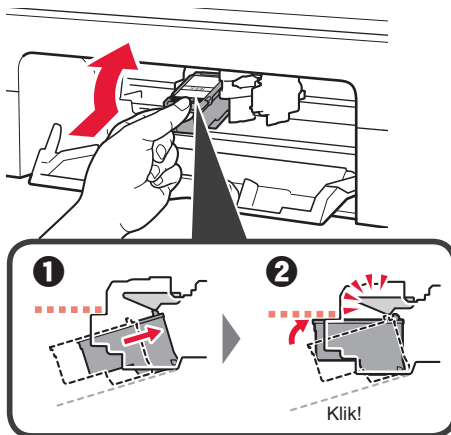


Må ikke berøres.

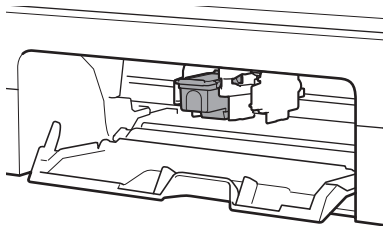
Pas på – der kan være blæk på den beskyttende tape.

- 3
- 1 Indsæt farve-FINE-patronen i FINE-patronholderen til venstre i en lidt opadvendt vinkel.
 - 2 Skub FINE-patronen helt ind og op, indtil den klikker på plads.

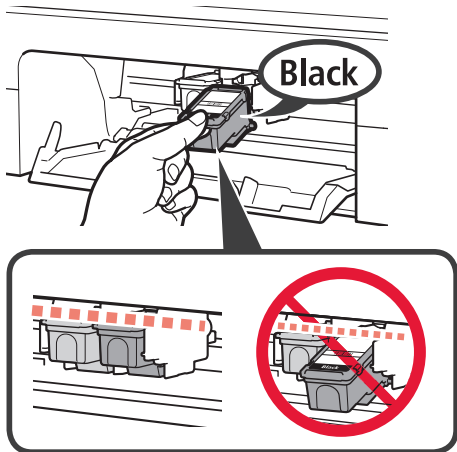
Bekræft, at FINE-patronen er lige og vandret.



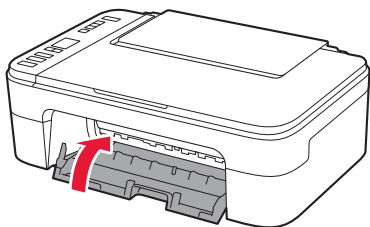
Slå den ikke mod de omgivende dele.



- 4 Gentag trin 2 til 3 for at indsætte den sorte FINE-patron til højre.



- 5 Luk dækslet.

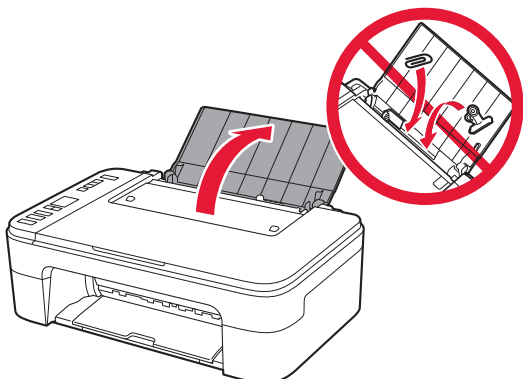


Hvis $E > 0 > 4$ vises på skærmen, skal du vende tilbage til trin 3 i "4. Installation af FINE-patroner" og bekræfte, at farve-FINE-patronen og den sorte FINE-patron er installeret korrekt.

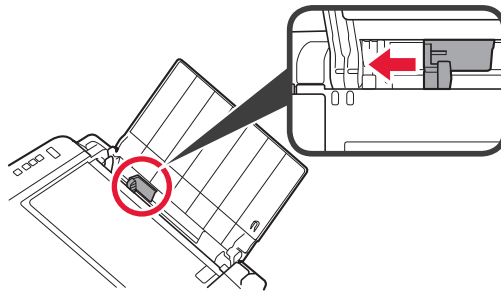
5. Ilægning af papir



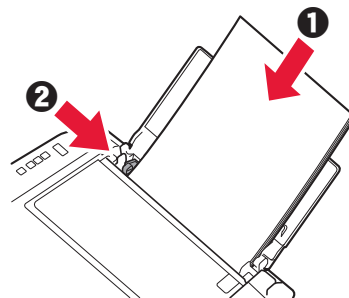
- 1 Åbn papirstøtten.



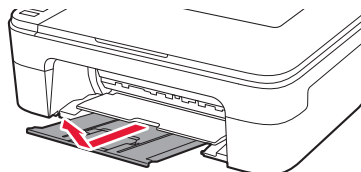
- 2 Skub papirstyret til venstre.



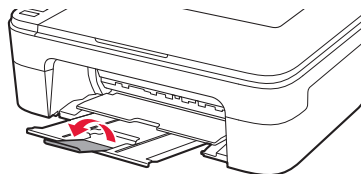
- 3
- 1 Læg almindeligt papir i Letter- eller A4-størrelse mod den højre kant med udskriftssiden opad.
 - 2 Skub papirstyret for at justere det med siden af det ilagte papir.



- 4 Træk udbakken til papir ud.

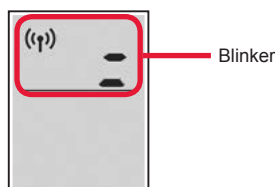


- 5 Åbn forlængeren til udbakken.



6. Klargøring af tilslutning

- 1 Bekræft, at skærmen vises, som den ses herunder.



Hvilken enhed tilslutter du?



Computer



Computer og
smartphone



Smartphone

Sådan bruger du printeren uden tilslutning af andre enheder. → "7-c"

7-a

Tilslutning til en computer

Hvis du bruger flere computere, skal du udføre disse trin på hver computer.



- 1 Gå til Canon-webstedet fra en computer.

<https://ij.start.canon>



- 2 Vælg  **Konfiguration**.

- 3 Skriv printerens modelnavn, og klik på **Ok**.

- 4 Klik på **Start**.

- 5 Klik på **Hvis du allerede har forberedt din, skal du gå til Tilslut**.

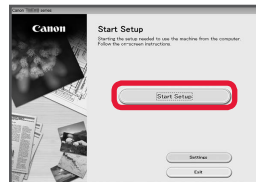
»»» Bemærk

Følgende trin gælder for Windows- (bortset fra Windows 10 in S mode) og macOS-brugere. Hvis du bruger andre operativsystemer, skal du fortsætte konfigurationen ved at følge instruktionerne på skærmen i stedet.

- 6 Klik på **Hent**.

- 7 Kør den downloadede fil.

- 8 Klik på **Start opsætning (Start Setup)**.



- 9 Følg instruktionerne på skærmen.

- Disse handlinger kan tage lidt tid.
- Hvis du også vil tilslutte en smartphone, skal du se "7-b. Tilslutning til en smartphone" på side 5.

Brug installations-cd-rom'en til Windows

Dobbeltklik på **EasySetup.exe** på cd-rom'en, og fortsæt derefter fra trin 3. Hvis du ikke har en internetforbindelse, skal du åbne mappen **win** på cd-rom'en og dobbeltklikke på **SETUP.exe**. Herefter installeres printerdriveren.

7-b

Tilslutning til en smartphone

Hvis du bruger flere smartphones, skal du udføre disse trin på hver smartphone.



Forbered følgende inden start.

- 1 Aktivér indstillingen Wi-Fi på din smartphone.
- 2 Slut din smartphone til den trådløse router (hvis du har en trådløs router).
Se brugervejledningerne til din smartphone og trådløse router for at få flere oplysninger.

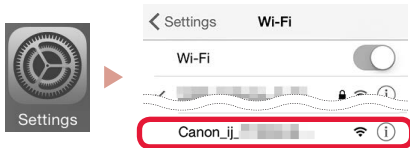
- 1 Installer appen "Canon PRINT Inkjet/SELPHY" på din smartphone.

- Scan den QR-kode, der vises til højre, for at få adgang til webstedet Canon, og download derefter appen.



- 2 Åbn Wi-Fi-indstillingerne på din smartphone. Tryk på det netværksnavn (SSID), der starter med "Canon_ij_". Hvis "Canon_ij_" ikke vises, skal du fortsætte til trin 3.

(Et eksempel på en iOS-skærm)



- 3 Åbn den installerede app.



- 4 Følg instruktionerne på skærmen i appen for at tilføje din printer.

Når du har tilføjet din printer, kan du udskrive fra din smartphone.
Hvis du vil udskrive fotos, skal du se "Ilægning af fotopapir" på side 6.

7-c

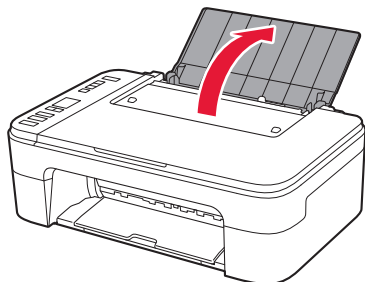
Ingen enhed tilsluttet

- 1 Tryk på knappen **Stop**.
- 2 Bekræft, at skærmen vises, som den ses herunder.

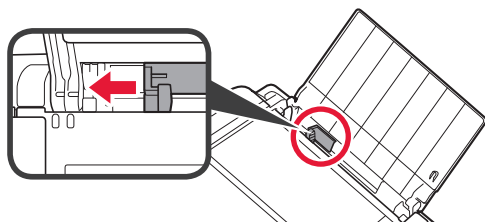


Ilægning af fotopapir

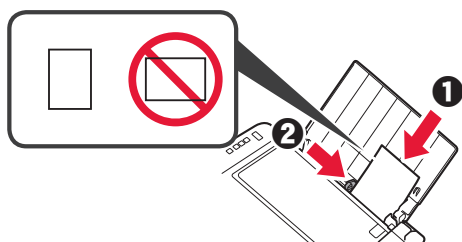
- 1 Åbn papirstøtten.



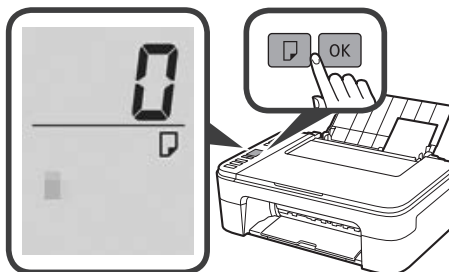
- 2 Skub papirstyret til venstre.



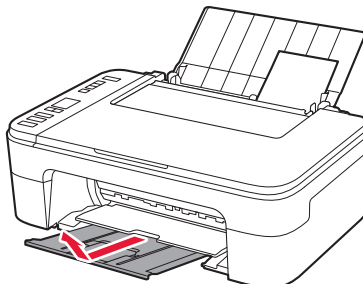
- 3 ❶ Ilæg flere ark fotopapir mod højre kant med udskriftssiden opad.
❷ Skub papirstyret for at justere det med siden af det ilagte papir.



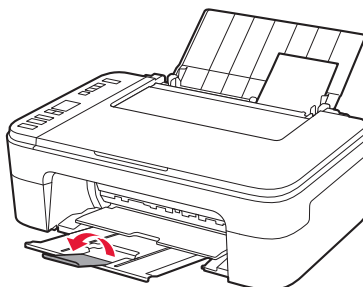
- 4 Tryk på knappen **Valg af papir (Paper Select)**, vælg en papirstørrelse, og tryk derefter på knappen **OK**.



- 5 Træk udbakken til papir ud.



- 6 Åbn forlængereren til udbakken.



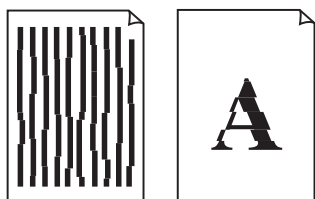
Hvis udskriftsresultaterne ikke er tilfredsstillende

Udfør Printheadjustering (Print Head Alignment), hvis lige linjer f.eks. er skæve, eller farverne afviger, eller hvis udskriftsresultaterne på anden måde ikke er som forventet.

Du kan få flere oplysninger ved at klikke på **Vedligeholdelse** i **Online vejledning** og se **Hvis udskrivningen er bleg eller ujævn > Justering af Printhead**.

Se bagsiden af denne vejledning for at få vist, hvordan du åbner **Online vejledning**.

- Linjer er skæve



- Ujævne eller stribede farver



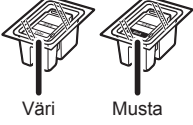
Online-asennus

<https://ij.start.canon>



1. Toimitettujen tuotteiden tarkistus

● FINE-kasetit



Väri

Musta

● Virtajohto

● Asennus-CD Windows-tietokoneelle

● Turvallisuus ja tärkeitä tietoja

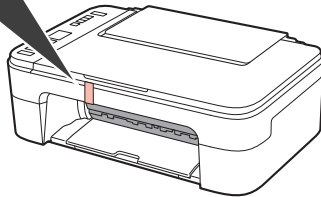
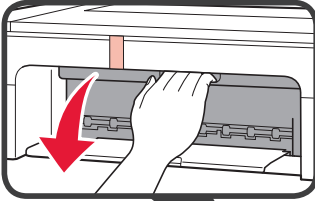
● Aloitusopas (tämä käyttöopas)

2. Pakkausmateriaalien poistaminen

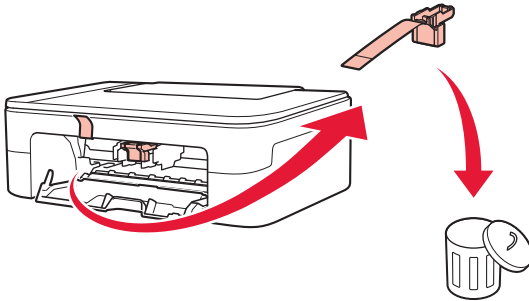


1 Poista pakkausmateriaalit ja oranssi teippi tulostimen ulkopuolelta ja hävitä ne.

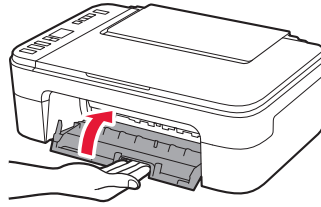
2 Avaa kansi.



3 Poista oranssi teippi ja suojamateriaali sisäpuolelta ja hävitä ne.



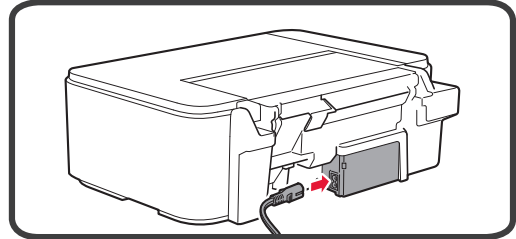
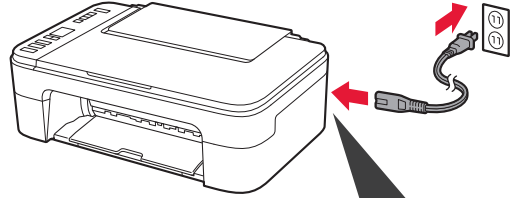
4 Sulje kansi.



3. Virran kytkeminen tulostimeen

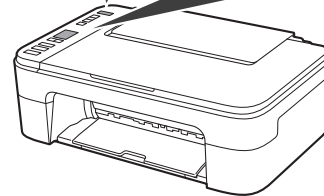
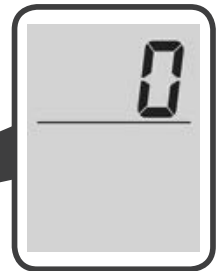
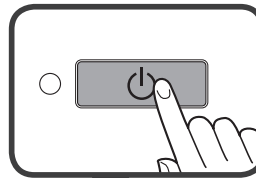


1 Kytke virtajohto.



Älä tässä vaiheessa kytke mitään muuta johtoa.

2 Paina **KÄYTOSSÄ (ON)** -painiketta.

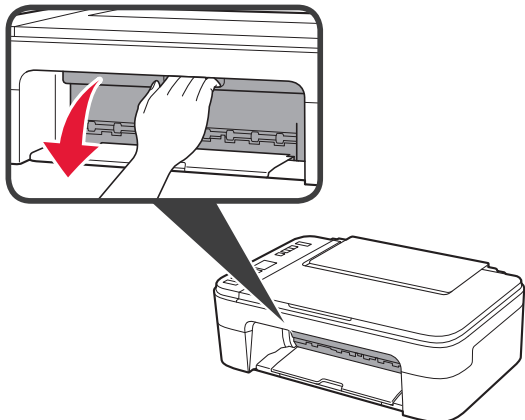


Jos **E > 0 > 9** näkyy näytössä, katkaise tulostimen virta painamalla **KÄYTOSSÄ (ON)** -painiketta ja aloita uudelleen vaiheesta 2 kohdassa "2. Pakkausmateriaalien poistaminen".

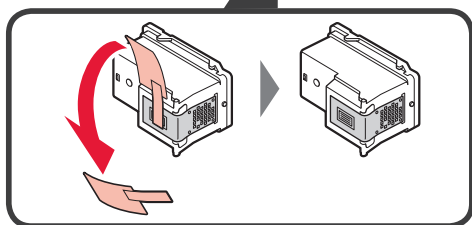
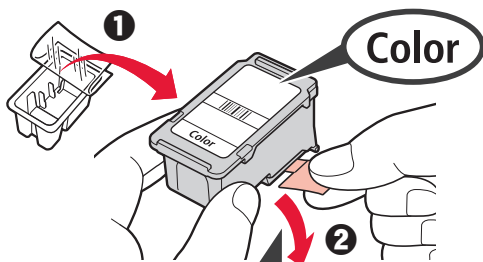
4. FINE-kasettien asentaminen



1 Avaa kansi.



2 1 Poista värillinen FINE-kasetti pakkauksesta.
2 Poista suojateippi.

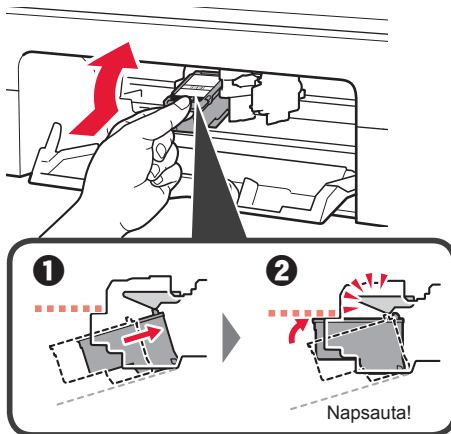


Älä koske.

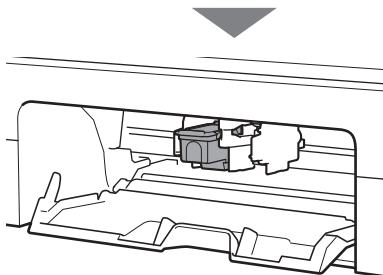
Varo suojateipissä olevaa mustetta.

3 1 Aseta värillinen FINE-kasetti vasemmanpuoleiseen FINE-kasetin pidikkeeseen hieman ylöspäin viistossa asennossa.
2 Paina FINE-kasetti varovasti paikoilleen, kunnes se napsahtaa.

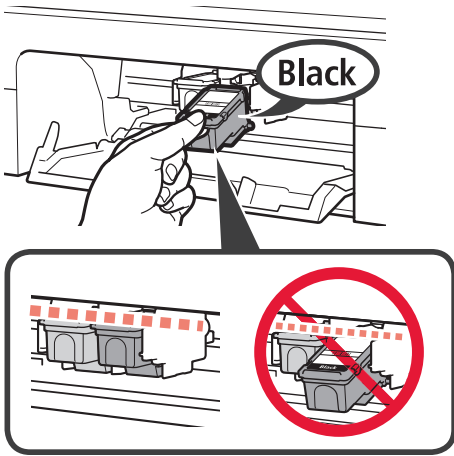
Vahvista, että FINE-kasetti on suoraan ja vaakatasossa.



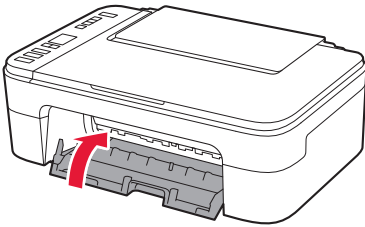
Älä kolhi sitä ympäröiviin osiin.



- 4 Toista vaiheet 2–3 ja asenna musta FINE-kasetti oikealle.



- 5 Sulje kansi.

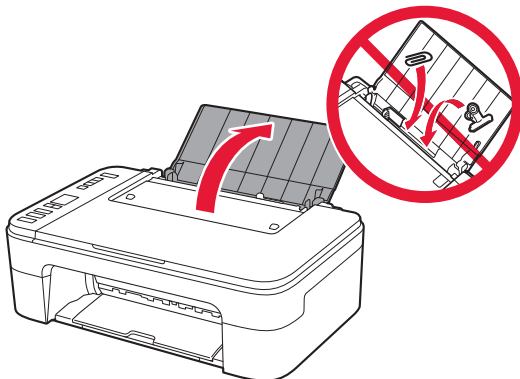


Jos E > 0 > 4 näkyy näytössä, palaa vaiheeseen 3 kohdassa "4. FINE-kasettien asentaminen" ja vahvista, että FINE-kasetit (väri ja musta) on asennettu oikein.

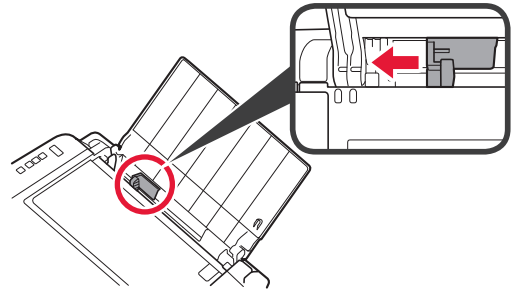
5. Paperin asettaminen



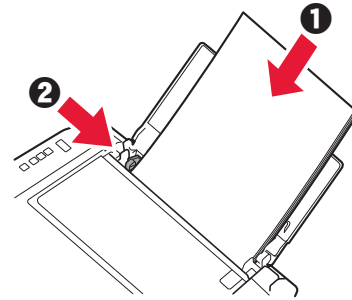
- 1 Avaa paperituki.



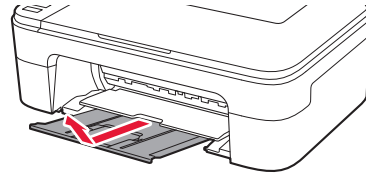
- 2 Liu'uta paperiohjain vasemmalle.



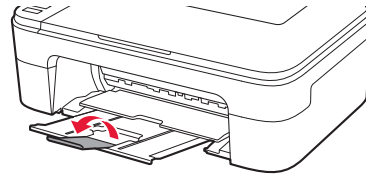
- 3 1 Aseta tavallinen Letter- tai A4-kokoinen paperi oikeaa reunaa vasten tulostuspuoli ylöspäin.
2 Liu'uta paperiohjainta niin, että se asettuu paperinon reunaa vasten.



- 4 Vedä paperin luovutustaso esiin.

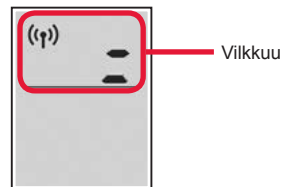


- 5 Avaa luovutustason jatke.



6. Yhteyden valmistelu

- 1 Vahvista, että seuraava näyttö tulee näkyviin.



Mitä laitetta olet yhdistämässä?



Tietokone



Tietokone ja
älypuhelin



Älypuhelin

Tulostimen käyttö ilman yhteyttä muihin laitteisiin. ➔ "7-c"

7-a

Yhdistäminen tietokoneeseen

Jos käytät useita tietokoneita, suorita nämä vaiheet jokaiselle tietokoneelle.



- 1 Avaa tietokoneesta Canon-verkkosivusto.

<https://ij.start.canon>



- 2 Valitse  **Määrittys**.

- 3 Anna tulostinmallin nimi ja valitse **Siirry**.

- 4 Valitse **Aloita**.

- 5 Valitse **Jos olet jo valmistellut tulostimen, siirry kohtaan Yhdistä**.

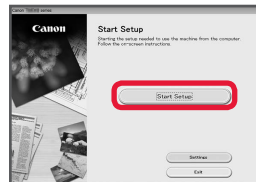
»»» Huomaus

Seuraavat vaiheet ovat Windows- (paitsi Windows 10 in S mode) ja macOS-käyttäjille. Jos käytät muuta käyttöjärjestelmää, jatka asennusta näytön ohjeiden mukaan.

- 6 Valitse **Lataa**.

- 7 Suorita ladattu tiedosto.

- 8 Valitse **Aloita asetukset (Start Setup)**.



- 9 Noudata näytön ohjeita.

- Näissä toiminnoissa voi kestää hetken.
- Jos haluat liittää myös älypuhelimien, katso kohtaa "7-b. Yhdistäminen älypuhelimeen" sivulla 5.

Asennus-CD-levyn käyttö Windows-järjestelmässä

Kaksoisnapsauta CD-levyn **EasySetup.exe**-tiedostoa, ja jatka sitten vaiheesta 3. Jos sinulla ei ole internet-yhteyttä, avaa CD-levyn **win**-kansio ja kaksoisnapsauta **SETUP.exe**. Tämä asentaa tulostinajurin.

7-b

Yhdistäminen älypuhelimien

Jos käytät useita älypuhelimia, suorita nämä vaiheet jokaiselle älypuhelimelle.



Valmistele seuraavat, ennen kuin aloitat.

- 1 Ota Wi-Fi-asetus käyttöön älypuhelimessa.
- 2 Yhdistä älypuhelin langattomaan reitittimeen (jos käytössäsi on langaton reititin).
Katso lisätietoja älypuhelimien ja langattoman reitittimen käyttöoppaista.

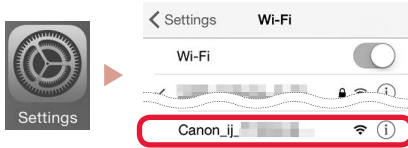
- 1 Asenna "Canon PRINT Inkjet/SELPHY" -sovellus älypuhelimien.

- Skanna QR-koodi, joka näkyy oikealla, niin pääset Canon-sivustoon, ja lataa sitten sovellus.



- 2 Avaa älypuhelimien Wi-Fi-asetukset. Napauta verkkonimeä (SSID), joka alkaa tekstillä "Canon_ij_". Jos "Canon_ij_" ei ole näkyvissä, jatka vaiheesta 3.

(Esimerkki iOS-näytöstä)



- 3 Avaa asennettu sovellus.



- 4 Noudata tulostimen lisäämisessä sovelluksen näytön ohjeita.

Kun olet lisännyt tulostimen, voit tulostaa älypuhelimesta.

Jos tulostat valokuvia, katso kohtaa "Valokuvapaperin asettaminen" sivulla 6.

7-c

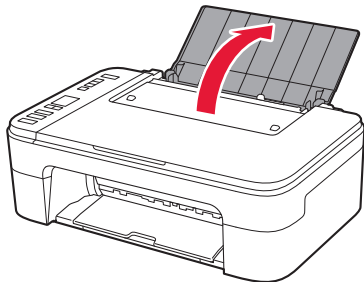
Yhtään laitetta ei ole yhdistetty

- 1 Paina **Pysäytä (Stop)** -painiketta.
- 2 Vahvista, että seuraava näyttö tulee näkyviin.

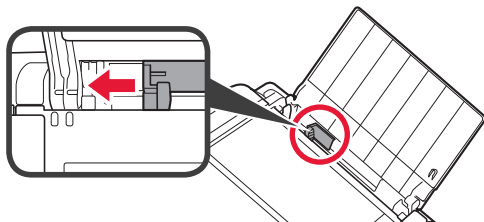


Valokuvapaperin asettaminen

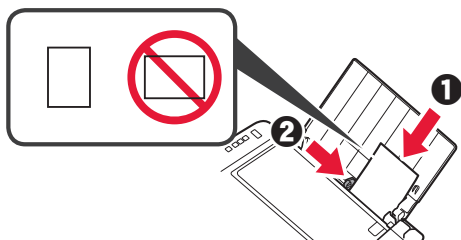
- 1 Avaa paperituki.



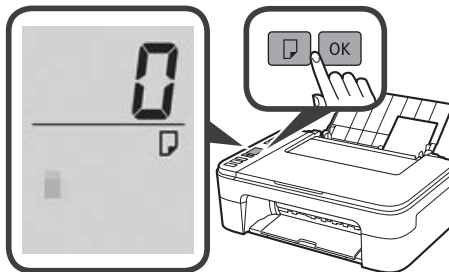
- 2 Liu'uta paperiohjain vasemmalle.



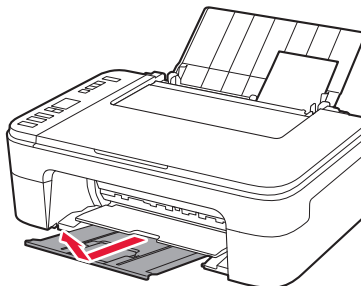
- 3 ❶ Aseta useita arkkeja valokuvapaperia oikeaa reunaa vasten tulostuspuoli ylöspäin.
❷ Liu'uta paperiohjainta niin, että se asettuu paperipinon reunaa vasten.



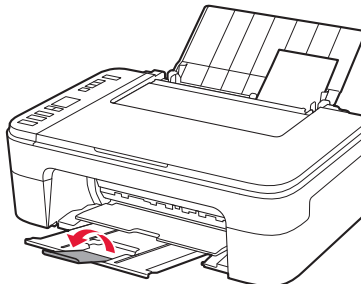
- 4 Paina **Valitse paperi (Paper Select)** -painiketta, valitse paperikoko ja paina sitten **OK**-painiketta.



- 5 Vedä paperin luovutustaso esiin.



- 6 Avaa luovutustason jatke.



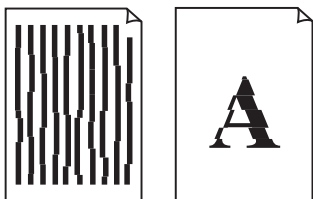
Jos tulostusjälki ei ole tyydyttävä

Suorita Tulostuspään kohdistus (Print Head Alignment), jos suorat viivat tai värit ovat epäyhtenäisiä tai tulostustulokset eivät muuten täytä odotuksia.

Saat lisätietoja valitsemalla **Huolto**-käyttöoppaasta kohdan **Online-käyttöopas** ja valitsemalla **Jos tulostus on himmeä tai epätasainen > Tulostuspään kohdistaminen**.

Tämän käyttöoppaan takakannessa on ohjeet **Online-käyttöopas**-käyttöoppaan avaamiseen.

- Viivat kohdistuvat väärin



- Epätasaiset tai raidalliset värit





Access Online Manual
Zugriff auf das Online-Handbuch
Accedere al Manuale online
Acceso al Manual en línea
Läs Onlinehandbok
Åbn Online vejledning

Accès au Manuel en ligne
Online handleiding openen
Acesse o Manual On-line
Αποκτήστε πρόσβαση στο Εγχειρίδιο Online
Gå til Nettbasert manual
Online-käyttöopas-oppaan käyttö

From your browser

À partir de votre navigateur

Über Ihren Browser

Via de browser

Dal browser

Do seu navegador

Desde su navegador

Από το πρόγραμμα περιήγησής σας

Från webbläsaren

Fra nettleseren din

Fra din browser

Selaimesta

